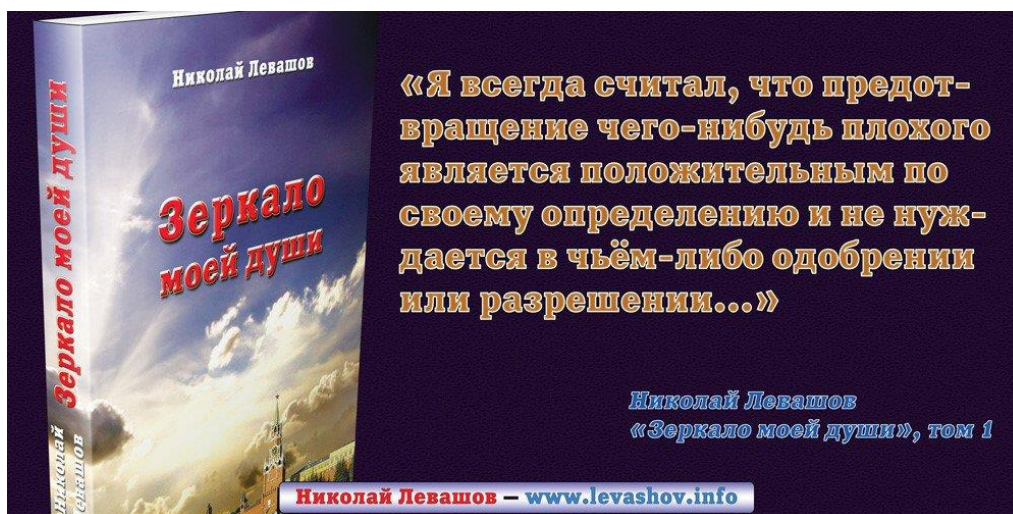


1.27. Cancer according to Khatybov and SvetL according to Levashov

Author: Shkrudnev F.D.

(Explanation of an Amateur from science)

People don't even understand that the Information is not provided in order for them to stock up on "stew and survive the apocalypse" and not for the feeling that everything will be Great and Bright for us. But only in order to MAKE PEOPLE THINK, CREATE AND HELP! ...which, unfortunately, is almost useless...



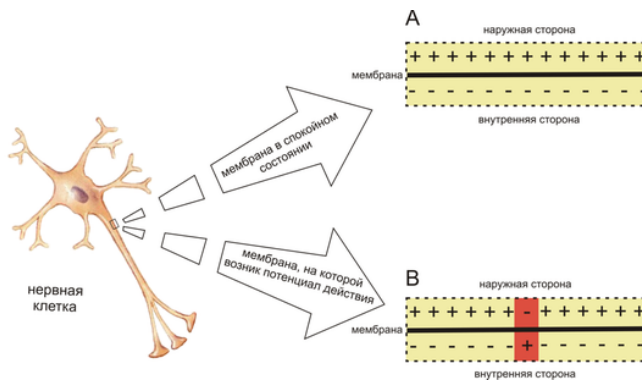
"I have always felt that preventing something bad is positive by definition and does not need anyone's approval or permission..."

*Nicolai Levashov
"The Mirror of My Soul", volume 1*

Quite often you can hear that "... unfortunately, almost all the materials of A.M. Khatybov are difficult to comprehend even for specialists — the author uses extremely confusing terminology, gives many classical concepts his own, understandable meaning to him alone, sometimes writes incoherently, erratically, a lot of excessive emotions and imagery...". But it should also be emphasized that quite a lot of people already say that: "... nevertheless, his ideas are an inexhaustible source for reflection, an intellectual treasure worthy of in-depth development, insight and understanding..."

For our part, we are making the "first attempt" to "shift" the author's article "Cancer as a form of cell existence" into a more or less understandable and accessible language for those who, despite this, do not understand everything that the author wanted to say, intuitively feel that the very idea of the cancer mechanism proposed by Khatybov is brilliant. We are sure that over time this knowledge will be available and understandable, but for now... at the end

of each part, **explanations of what the author** has stated are given and against this background, **a story about the "SvetL" Program** and their real **interaction and assistance in improving a Person** is given and continues.



The nerve cell → membrane is in a calm state → A - membrane - outer side - inner side

The nerve cell → membrane on which the action potential arose → B - membrane - outer side - inner side

CANCER IS A CONDITION OF A CELL IN THE ABSENCE OF COMMUNICATION WITH THE BRAIN.

The BRAIN, as the highest system of organization of charges, has a certain corridor of direct control of cells of lower levels of organization of the biostructure (Human Body).

The electromagnetic impulse generated (sent) by the Brain, and received back by it as confirmation, has a strictly consistent organization for each living cell. The pulse is generated by the Brain from a basic series of octaves of k-structures: 96, 72, 68, 66, 64, 62, 54, 48, 32, 28, 24, 21, 16. Octaves 66, 68, 72 determine the genotype, and the Brain works with only one value out of three.

In addition, each pulse value can be **decomposed into a 64x64 matrix**, which determines the entire set of its values. The pulse must have a **CERTAIN POTENTIAL** — if this potential is **BELOW** a certain standard value, then the **BRAIN** quantizes the charge first by the equivalent of

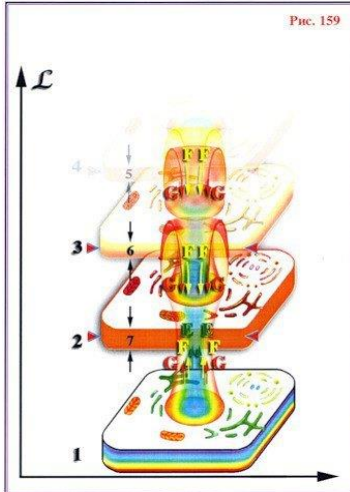


temperature, then by the sliding angle. And if **THERE IS NO CONFIRMATION** (response) from the cell, then the cell **IS PERCEIVED AS DEAD — IT DOES NOT EXIST for THE BRAIN.**

The temperature quantization limit is up to +43.6 °C (in 0.2 °C increments), and the sliding angle is up to 21.5. Any cells of the body under normal conditions should be subordinated to

THIS PARTICULAR mode of BRAIN operation.

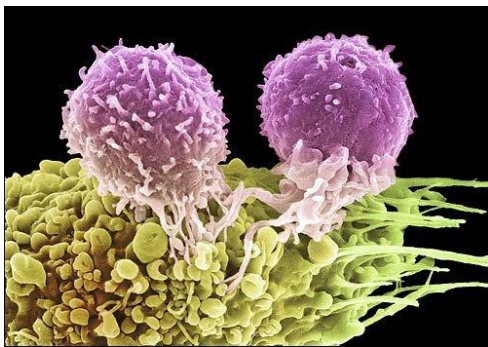
However, **a living cell is organized in neutron space**, which imposes a number of restrictions on its normal operation. The concept of neutron space was introduced to denote



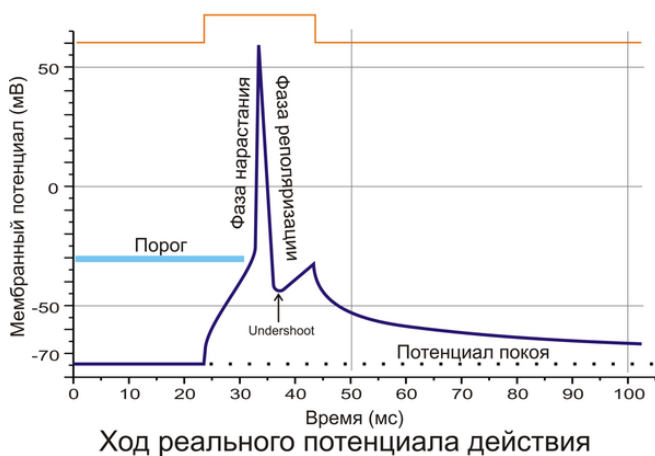
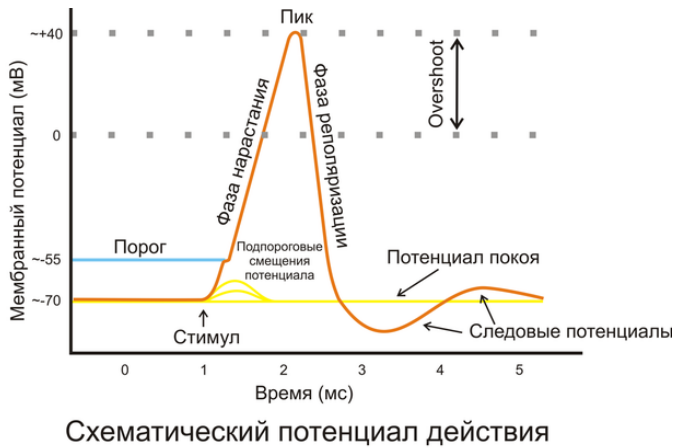
immaterial structures or non-inertial mass. You can call it a "soul", but a light cloud rising after death is also a material mass. Here, for understanding, it is recommended to read N. Levashov's work "The Last Appeal to Humanity" (ch. 2 -3).

THE OPINION OF AN AMATEUR FROM SCIENCE: The interaction of the brain and body cells can be likened to the interaction of a radiotelephone base with radio tubes. Communication is carried out according to a certain protocol — in this context, it does not matter at all which one. The only important thing is whether the tube (cell) is recognized by the base (Brain) or not. In this case, for the "**SvetL**" Complex it is important to identify (selection, "launch") exactly those Programs that allow you to "connect" as a Base (Brain) and the tube (cage), for the implementation of "primary control" and, in fact, checking the QUALITY (availability) of this connection.

The influence of the external environment Changes in albedo, for example, atmospheric phenomena: rain, snow, wind, drought, etc., entail unpredictable distortions of electric and magnetic potentials and gravitational frequencies, causing corresponding changes in cell temperature and sliding angle.



External stimuli, for example: radiation, chemicals, geomagnetic background (for example, change of residence), lead to frequency rearrangement and, as a consequence, to distortion of the potentials of a living cell. Both gravitational potentials and electric potentials have certain limits. When going beyond these limits, the information exchange in the body is distorted.

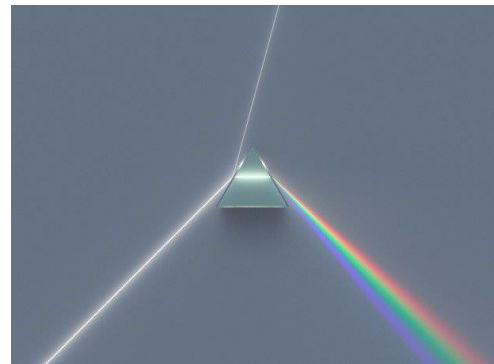


As a rule, these distortions lead to the appearance of a different type of cell and the folding of the code embedded in each cell. The genetic code is transformed into any other structure capable of existing in conditions of stable external influence. This is **not yet a bacterium** that independently (as a parasite) uses the electrical potentials of a living cell, but the cell itself.

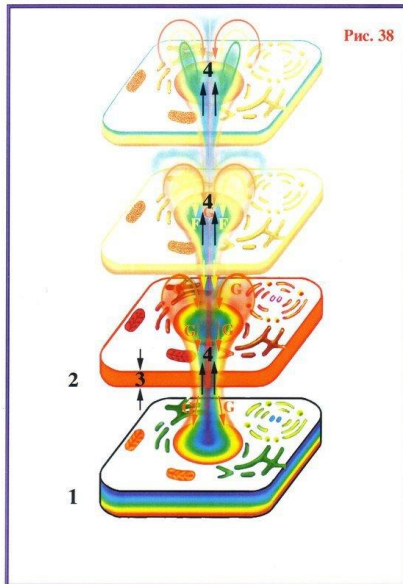
However, taking into account the difference in the standards of the electromagnetic pulse in different spaces, a living cell has a wider range of its existence and does not require strict matching of albedo in time and space. And this means that the **BRAIN** is forced to adapt to a new structure within its standard.

To prevent the avalanche—like formation of pathological cells, the **BRAIN forms an integral corridor** - according to the albedo of the **BRAIN, 50,000 cells** with altered albedo should be removed from its control area for a sunny day. That is, if only 10,000 cells were formed during the day, then they are normally removed from the area of brain connections and are not subject to processing and control by an electromagnetic pulse. But this is only if these cells **have not passed into another form of existence** — bacterial or autonomous.

When cells are removed from the area of brain control, they are "removed from allowance", die off and are excreted from the body. On the other hand, the **number of new cells** with an altered albedo may exceed 50,000, and then the **BRAIN weeds out** — the "less harmful" cells remain and receive a temporary connection with the brain by an electromagnetic pulse, and the rest are "turned off". However, this is **where the "Trojan Horse"** is located - the abandoned cells narrow the cull corridor, closing the channels through which these cells can be destroyed. The



narrowing of the corridor from **50,000 to 45** leads to unlimited growth of cells temporarily connected to the **BRAIN**, which are called "**CANCER**".



As a result, the **BRAIN** is forced to rebuild its potentials and the entire organization of its charging system for new cellular structures, which, in turn, can initiate "testing" of the **BRAIN** itself. The **BRAIN** is a simultaneously connected state of **3 spaces - neutrino (higher), antineutron and proton, or ion,** and this should not be forgotten.

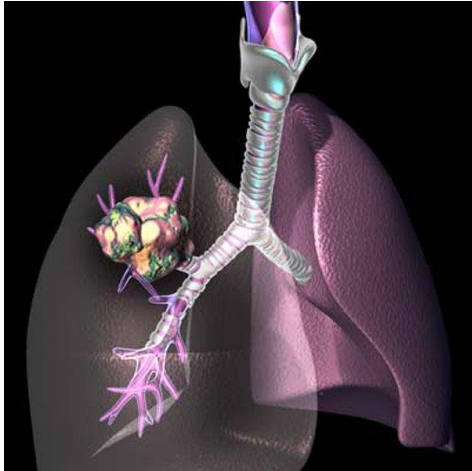
THE OPINION OF AN AMATEUR FROM SCIENCE:

Albedo of a living brain cell. (Albedo (Latin albus — white) is a characteristic of the reflective (scattering) ability of the surface.

The human **BRAIN** is a very complex, complex, that controls all the cells of the Human body. This control consists in changing the pH and changing the electrical potential of the cell. Here we are talking about **the albedo of a living cell**, that is, **about the time of the passage of reactions and about the space of existence of the cell** at the time of the passage of reactions.

Under the influence of some external, usually harmful, factors (mechanical injury, burn, radiation, etc.), certain fundamental properties of body cells change, which entails a distortion of their interaction with the Brain. Altered cells that do not meet the standard **are considered by the Brain as pathological and subject to elimination.** In a day, the **BRAIN** is able to "remove from the allowance" no more than 50,000 pathological cells. If the number of pathological cells formed at the same time **exceeds this value, then 50,000** of the most harmful ones are rejected (from the point of view of non-compliance with the standard), and all the others **temporarily remain and, of course, have a connection with the BRAIN.** The presence (even temporary) of cells in the body that do not meet the standard leads to a **NARROWING** of the culling corridor.

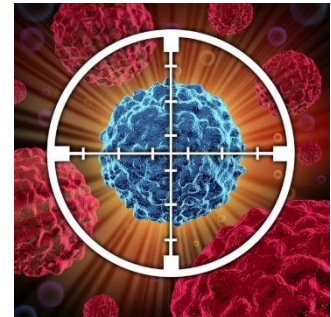


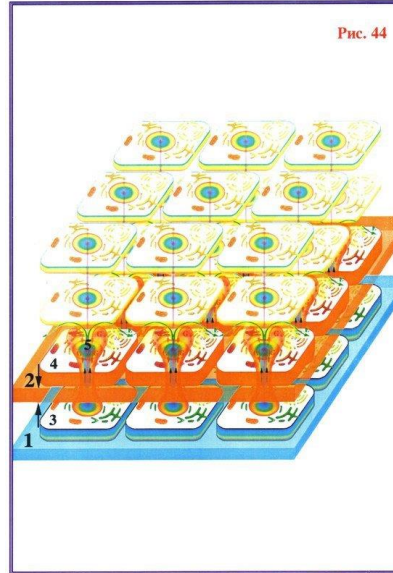
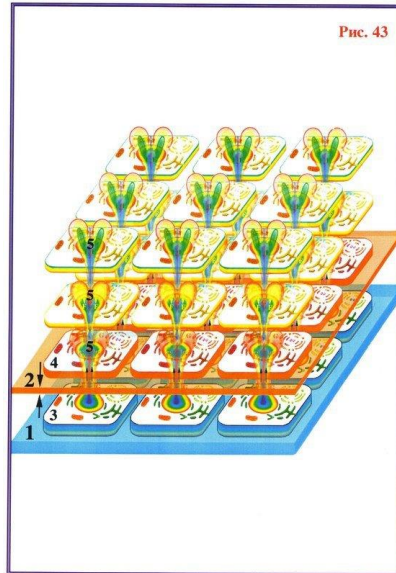


This task and the "CONTROL" of this process are solved by the "SvetL" Programs, purposefully "deployed" by the **GENERATOR**, in accordance with the "DIAGNOSIS" (examination) of the entire Human body, the "state" and "ability" of **its BRAIN** to cope with the "identified situation" independently, after the **FIRST ACTIVATION of the "SvetL" Complex - BY THE USER.**

Example: you've been badly sunburned. Before the onset of this pathogenic event, **10,000 pathological cells were formed** in your body every day, for example, all of which were safely removed from the body. After

burning, you have, **say, 300,000 pathological cells formed almost simultaneously.** In a day, the **BRAIN** can get rid of **only 50,000**, and **250,000 altered cells remain in the body.** This leads to the fact that on the next day the **BRAIN can cull significantly** fewer cells than the standard 50,000/day — for example, 40,000/day. During the second day, 40,000 more cells are culled, and 210,000+N (additionally formed for other reasons) remain. At the same time, the culling corridor narrows even more — say, to 30,000/day, etc. When the culling corridor **narrows to 45/day**, there is an **unlimited division of "undeveloped" cells** that become autonomous, i.e., not subordinate to the BRAIN. **And from that moment on**, CANCER begins to **"CHANGE" the BRAIN for itself.** The complex, in direct interaction with the **BRAIN** (the possibilities have already been determined after the diagnosis) in stages, **will not "allow"** the narrowing of the culling corridor or will begin to **"expand" this corridor** to the state of normality. A more detailed process is described in the articles under the heading "KNOWLEDGE FROM NA_CHALA"





Internal factors

The pathologically altered structure of a living cell forms an environment that ensures the existence of a colony of new cells resistant to external influences. This (internal) environment has the ability to change the charge of a living cell, both in the direction of its increase and decrease, due to the "Kirlian" radiation. **An increase in the charge provokes a decrease in the potential of the BRAIN.** Reducing the charge sends the BRAIN information about the need for additional "supply of energy". This recharge is used by the pathological colony for its own life support.

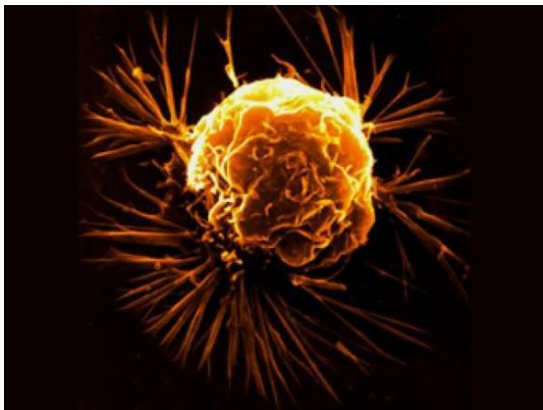
All drugs/medication whose action is based on the suppression of the potentials of pathological cell colonies cause an increase in the electromagnetic potential of the Brain, which is transmitted to living cells, and the same potential is distributed in the pathological colony. Therefore, any effect - **from chemotherapy to laser "burning"** - leads to an increase in the potential imparted to all living cells (which manifests itself in an increase in temperature, acceleration of reactions, and hence a reduction in cell life).



The changed conditions of the **neutron space** also leads to changes in the functioning of the BRAIN — to a deviation from the reference parameters. At the limit values of the electric potential, the right- and left-spiral **DNA structures of a living cell** become indistinguishable and are perceived by the BRAIN as a normal living cell. And this means that each cell gets its own control structure. Thus, the BRAIN, in addition to

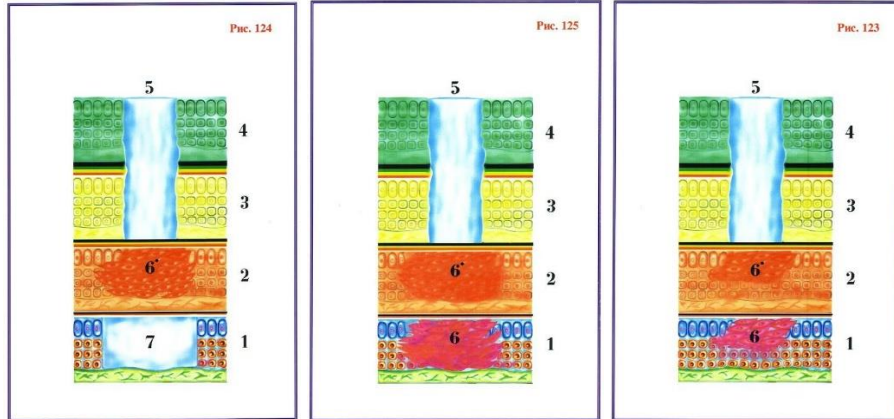
everything else, **also receives a virus**, that is, a structure that has an inverse albedo relative to the normal communication matrix.

The appearance of the virus entails a deterioration of the initial charging system of the **BRAIN**, without changing the reference values, that is, parameters **such as the sliding angle and humidity fall in the BRAIN itself**. When certain limits are reached, the BRAIN can no longer control anything, and strives to get rid of any cells — "its own" or "strangers". But this does not save the situation, **since viruses, reducing the Brain potential, lead to its destruction**. Unlike a colony of "strangers", where cells already have a single structure for removing the electromagnetic potential, "their" cells remain an autonomous formation in this environment and **transmute quickly enough, transforming into new structures**.



Tables of frequencies of colony formation - are set out in the reference book on frequencies in the **author's monograph "Cold Nuclear Fusion"** and are USED in the "SvetL" Programs. Today, with a large **number of "experts" and "cognoscenti", "seekers" and just charlatans**, it is INAPPROPRIATE to publish this material publicly. The **elimination of colonies** is carried out by the method of **superposition of frequencies**. **However, the BRAIN**, having no cells that should receive an electromagnetic pulse, **creates new cells of the same structure** — according to the connection of the **VIRUS** with the **BRAIN** — and even if the cell colony is destroyed, **the BRAIN creates it anew**, and not necessarily where it was before. This function of the **BRAIN** is automatic and cannot be corrected from the proton space, **that is, the environment of the material existence of the cell**. This task of this day can be "implemented" only by the GENERATOR and **the specified "SvetL" Programs**.

In the material (proton) environment, there are no and cannot be drugs that affect the immaterial environment. Knowing the frequencies that created the "aura" around autonomous cells, it is possible to **develop devices** for eliminating the "aura" (which has already been implemented and tested). **Surgical operations**, as a rule, do not lead to success, since any cell, including an autonomous one, is primarily in the neutron space, but **WITH THE KNOWLEDGE OF HORSE LITERACY**, you WILL NOT LOOK there.



THE OPINION OF AN AMATEUR FROM SCIENCE

Obviously, the interaction of the transmitter (BRAIN) and the receivers (peripheral cells) depends on the **power of the transmitter and the sensitivity of the receiver**. To maintain the same communication quality, with a decrease in the sensitivity of the receiver, it is necessary to increase the radiation power of the transmitter and vice versa — with a highly sensitive receiver, a small power is sufficient. **This is successfully implemented by the "SvetL" Programs.**

A simple but amazing example:

It is known that ethyl alcohol leads to a noticeable decrease in the ORP of peripheral tissues, i.e., in other words, alcohol reduces the sensitivity of the receivers so much that even coordination of movements is disrupted. In response to this, the **BRAIN** begins to amplify the transmission signal to such an extent that the head (by morning) **begins to split and buzz like a transformer booth.**

In a new light, there is a (often fruitless) struggle with various colonies that parasitize the body — **for example, with fungi**. On the one hand, the injected antifungal drug suppresses the potential of a pathological cell colony. On the other hand, this leads to an increase in the electromagnetic potential of the Brain, which stimulates even greater activity of fungi. And who will win here... it's not obvious at all. But if the **"SvetL" Programs** are used, then THERE is NO NEED to WORRY. That's when THE VICTORY IS OBVIOUS.



A virus is a structure that, in response to the arrival of a Brain signal, **causes a cellular response** diametrically opposite to the normal one.

Local (domestic) removal of pathological foci (for example, surgically) **leads to their automatic reconstruction by the Brain in ANY OTHER PLACE**. It must be remembered that anything above 64 octaves **is not an inertial mass**, that is, there are no gravitational frequencies. We must not forget that **there are no technical means to analyze the work of the BRAIN** - you can only analyze the consequences (at the proton or biological level). Changes in biological structures do not mean changes in BRAIN structures, but indicate the properties of the BRAIN to **protect itself from adverse conditions** by changing the properties of high-frequency lymph...

The BRAIN is a very complex, complex, it cannot be created from dust. **The BRAIN is the result of many millions of years of work** on the formation of a biostructure (Human). And of course, the **BRAIN** cannot be formed by itself from dust using chemical reactions. **The BRAIN is a simultaneously connected state of 3 spaces - neutrino (higher), antineutron and proton, or ion.**

Unfortunately, modern science can work (and create technical devices) no higher than 64 octaves, **there are no types of devices that can be created above 64 octaves**. Therefore, today any ATTEMPT to "fix" in any way known to science, the "work" of the "SvetL" Complex, and even more so its Programs, is doomed to failure, no matter who wants it. Any conversations and "ranting" for the "respected public", on topics such as "**TRANSFERRING the GENERATOR to other MEDIA**", the possibilities and "**skills of ADJUSTING the "SvetL" PROGRAMS**", depending on the listening audience and the time of year, as well as atmospheric pressure and its own "**SIGNIFICANCE**" – is a **MAGNIFICENT FICTION**, most likely caused by either **POOR NUTRITION, both of the Body and the Brain**, alcohol consumption or the direct impact of what is happening today, regarding the TRANSFORMATION of the life support environment around us, about which much has already been written and provided for USE.

The same applies to those who are PARTICIPANTS of the "**SvetL**" PROGRAMS today. Today's programs, in addition to their **DIRECT purpose in HEALTH IMPROVEMENT**, will also "PROVIDE" the PARTICIPANT with a "LARGE SHOVEL" (titanium, so that it does not break during application), for "DIGGING", UNDERSTANDING AND COGNITION of a huge array of information that Outstanding **PEOPLE of our TIME** have left us, such as **N. Morozov, A. Khatybov, N. Levashov** and others, now living, in order **for you to finally "BEGIN the TRANSITION" from the state of PEOPLE to the STATE OF Human.**

