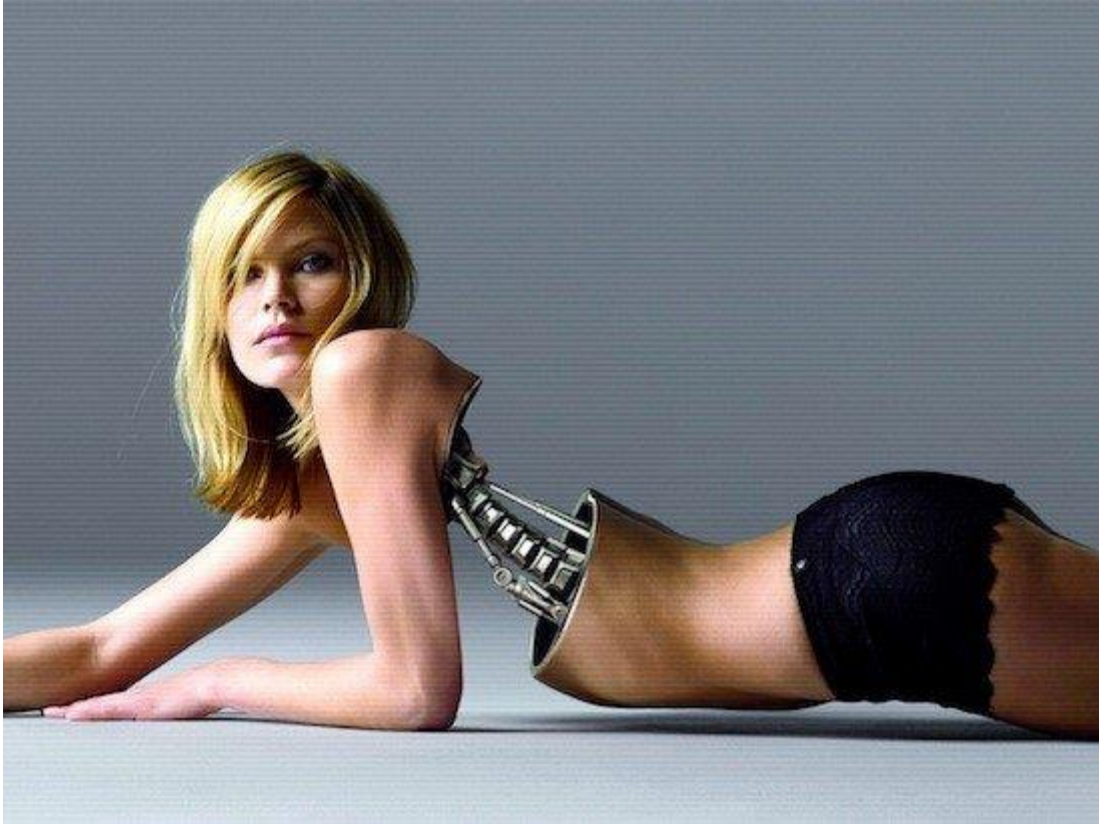
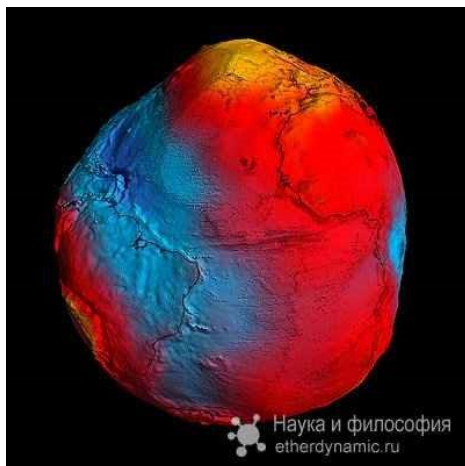


1.26. What is useful to know and understand for the participants of the "SvetL" programs?

Author: Shkrudnev F.D.



In recent years, science has shaken Humanity with discoveries, and with information on these discoveries, housewives are already demanding to “align their diseases” with new scientific achievements.



Earth. "The inclination of the earth's axis to the plane of the ecliptic $66^{\circ}33'22''$ ", the shape is a geoid, the figure is close to an ellipsoid. Average radius 6371.032 km, equatorial 6378.160 km, polar 6356.777 km, geometric surface area 510.2 million square kilometers, volume – $1.083 \cdot 10^{12} \text{ KM}^3$. Acceleration of free fall at the equator" 9.7805 meters/sec².

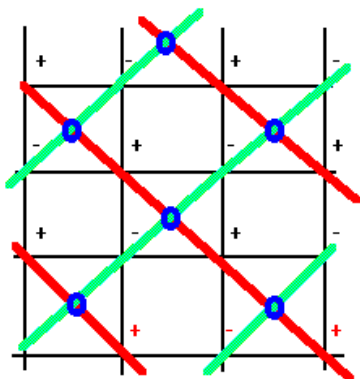
Valid data:

No	Name	Value
1	Inclination of the earth's axis to the plane of the ecliptic. The parameter does not change, it is a constant of the Earth.	66°33'22"
2	Average radius of the ball	6371.034 км
3	Equatorial radius	6378.160 км
4	Distance from the Earth's center of gravity to the North Pole	6382.024 км
5	Distance from the Earth's center of gravity to the South Pole	6338.219 км
6	Average radius of the internal magnetic circuit (contour) is a set of force lines	6227.385 км
7	Equatorial radius along the the magnetic contour of the equator	6232.341 км
8	Distance from the Earth's magnetic center to the magnetic North Pole	6239.439 км
9	Distance from the Earth's magnetic center to the magnetic South Pole	6226.121 км
10	Average radius of the gravitational contour - a set of lines of force that do not have the property of gravity, is completely aligned with the magnetic circuit.	6227.385 км
11	Magnetic momentum of a field line	388.0 tesla/м³
12	Number of rings of magnetic field lines	8.640.000
13	Spiral of the gravitational field line	Forms a square with the magnetic field line
14	Average radius of the Earth's electrical contour, the	6227.385 км

	remaining parameters completely coincide with the magnetic circuit.	
15	Spiral of the electric field line, direction opposite to the gravitational field line	Forms a square with the magnetic field line
16	Frequency of gravitational field line	Depends on the magnetic field line
17	Electric field line potential	Formed from the potential of the magnetic field line
18	Angle of inclination of the magnetic axis. Calculated from the coordinates.	11° 36'
19	Coordinates. The half-plane formed with the North Pole, in the direction of the magnetic pole, is 0 time of day and is 4 hours away from Chekhov 15'45" . The reference point of 0 days does not depend on external factors.	26° 37' 36" E. 62° 38' 12.5" N.E.
20	Scanning the Earth's magnetic axis, speed	1 sec in 124 years.

1. Radiation of Hartmann zones.

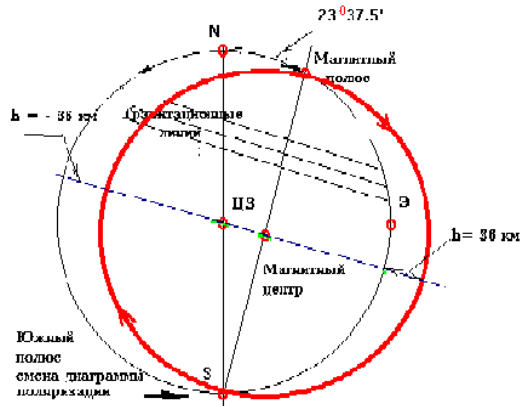
The whole Earth is covered with a grid that has positive and negative points. Both positive and negative points form lines that close at the Earth's magnetic pole (there is one magnetic pole, and it is shifted relative to the geometric pole by **23°37.5'**, in addition, the magnetic pole scans around the geometric pole, at 1996.6.06.28.20.00 the position of the magnetic pole is equal to **36°** north longitude and **23°37.5'** east latitude).



Magnetic lines are marked in red (lines +), frequency = 3.840.000 Hz. The direction of the lines is clear from the following figure. The magnetic pole scans to the West. At the **south pole**, the polarization (diagram) changes to **90°**, the direction further to the magnetic pole with the same sign.

The sign determines the speed of the magnetic flux and the direction. The reflection of these zones is the force magnetic field on the Earth. What is actually and directly taken into account when working with the "SvetL" Programs, in accordance with the location (residence)

of the Participant of the Programs. Moreover, today there are significant changes, both in the structure of the grid itself and in the territories where people live (with varying degrees of "intensity". In accordance with the execution of Conversion Programs. The height of the magnetic lines varies and the maximum distance from the geometric surface is 36 km. All lines of Hartmann zones are also scanned along with the pole.



36 km.

The magnetic pole is located at a depth of 12 km from the geometric surface of the Earth. Magnetic lines of force go from the North Pole to the magnetic pole and then to the South Pole, where the polarization is changed

The **maximum distance of magnetic lines from the Earth's surface** (geometric) is **36 km**.

Minimum - (the Bermuda Triangle area) is also

The intersection point at the **South Pole** is at a depth of 12 km, and the angle is formed from this depth. **The magnetic field cord is not constant and scans from West to East.**



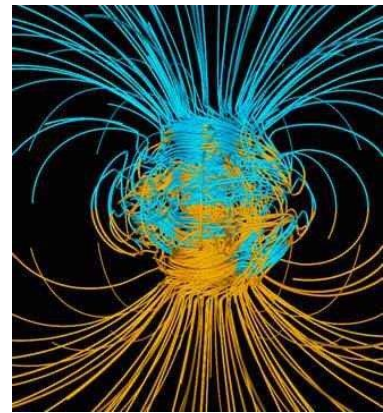
The time of complete "running" of the magnetic field wave along all lines corresponds to a day, or 86400 seconds, and a second depends on the power of the Earth's external magnetic



field. ***It is this time of full "cycle" of the magnetic field waves that are the daily rhythm of the Earth and determine the state of the magnetic field.***

Which, accordingly, directly affects a Person, to one degree or another, causing certain emotions and "actions", in accordance with the specified parameters of the Earth's Control System and the Control System (subsystem) in a particular region (Transformation Zone). The surface formed by magnetic lines of force is the magnetic surface of the Earth.

The magnetic line crossing the **North-South Pole** axis and forming a surface with the magnetic pole **gives the meridian of the time of day**. Today, relative to **Chekhov**, the time difference is **5 hours 15 minutes 45 seconds** (without taking into account summer, winter and other times, for example, maternity time, as well as - the opinion of Prime Minister Medvedev and deputies of all stripes).



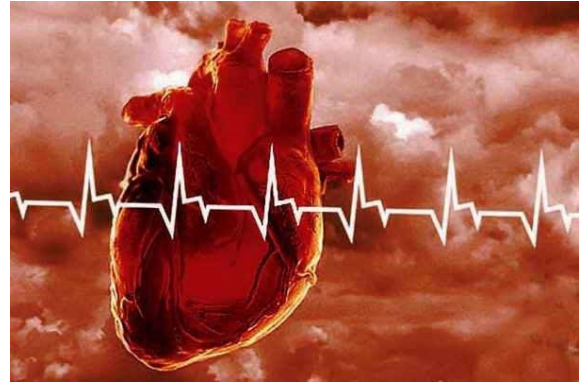
If, for example, the **Bermuda Triangle** "emerges" on the surface of the Earth, it will be the deadliest area for all living things. Magnetic lines of force crossing the Earth's surface form the magnetic field of the Earth's surface (it is commonly considered today as an electric potential). **There are maps of this potential**, but they do not correspond to the meaning. And we do NOT take them into account. **The magnetic center of the Earth is a purely geometric center of the magnetic surface and serves only for coordinate reference.**

The power of the magnetic field line is 348 vols/M³. This is the norm for ensuring the vital activity of any living organisms on Earth. To convert the Curie electric field into magnetic and gravitational fields, there is a complex of pyramids.



The frequency of 3.480.000 Hz is the base frequency of the Human heart and of all living beings having a hematopoietic system in the body (*fish have a lymph system provided by a gravitational field*).

"SvetL" programs, depending on the condition of the Participant, coordinate and maintain this frequency in the complex of all "running" processes of the owner's RECOVERY. **The magnetic field line**, along which a wave with a given frequency has already passed, is not "empty", and another frequency "follows". The frequency range is from 18.5 Hz to 3.480.000 Hz and above. The number of frequencies is 2400.



The frequency (for the Heart) is a kind of "battery - recharge" every day, which is actually "regulated" by the "SvetL" programs, depending on the condition of the Person using these programs on the "carrier" on which the Generator with these programs is installed.



P.S. As an example – WHAT is happening today?

The South European "appendix" of the emerging new Zone of Living Space (part of Zone No. 1):

-Rostov-On-Don;

-Bologna (Italy)

-Sassari, Sardinia (Italy)

-200 km south of Heraklion (Crete, Greece)

-Krasnodar and others ...

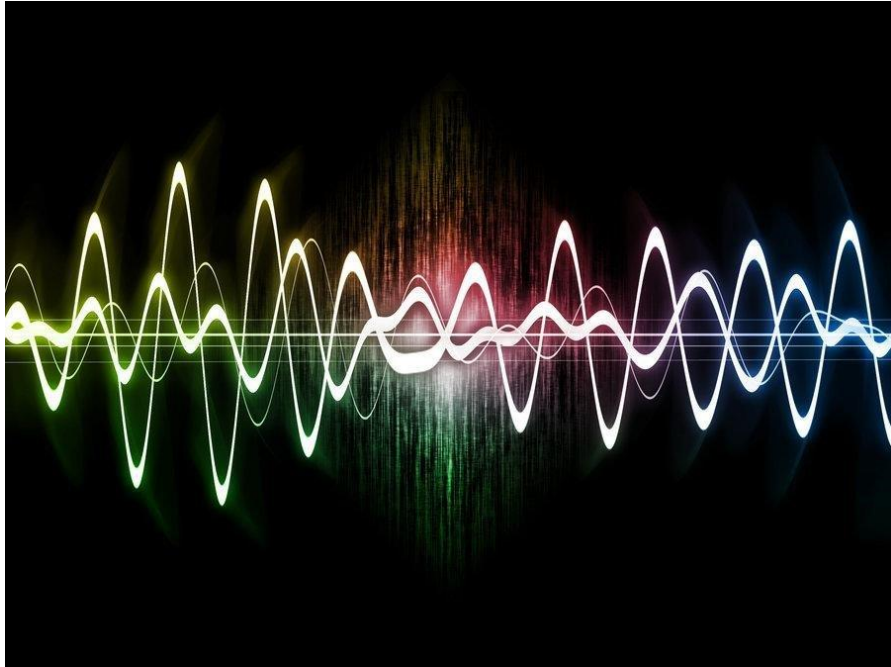


There is a process of changing the shape of the *Scattering Space of the base radiation frequencies*. A lot of work has already been done in this Zone, now the "time" has come to **the beginning of the processes along the northern edge of Rostov-On-Don - Bologna**. (This will not affect the "results" of the Olympic Games in Sochi). BUT – this is just the beginning. "Foci" to a greater extent **cannot be registered by current devices**, since ***the frequencies of the devices are much lower than the limits of the octaves in which the process is taking place***, but "induced speculative effects" **from earthquakes to "photo miracles"**, naturally – WE ARE ALREADY OBSERVING with YOU and are full of photos and "videos" of the "UNUSUAL" on the internet. And there will be many more like it!

THE MIRACLE HAS COME!!! Where are the blessed ones in "dressing robes"?

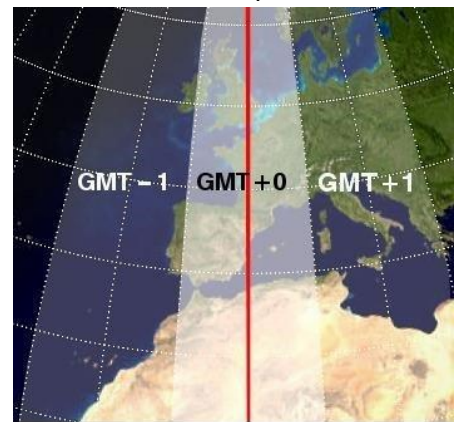


TACT



The basis of the Life Support System is not only a method of converting the potentials of magnetic pulses, electrical and gravitational frequencies, but also control over their use. For the purposes of controlling the portionality of the receipt, the transformation of potentials in the information field system, **there is a TACT. This is a strictly regulated window, equal to exactly 15 minutes.** In addition, **each clock cycle** is divided into intervals of **12 seconds. There are 75 intervals in one cycle.**

OUR EARTH has magnetic, electric and gravitational axes. There is a magnetic plane relative to the magnetic axis and the North Pole. Relative to the magnetic plane, **0 Earth time is determined.** A change in the structure of the magnetic field during the life of the Earth leads to **a change in the spatial position of the magnetic plane.**



ForexAW.com

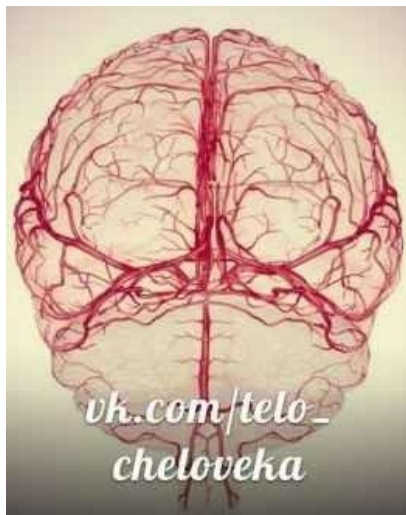
Unlike the precession of the **electric axis (Verkhoyansk - South Pole)**, where the axis is not determined by the physical anchoring of ion structures, the magnetic axis used **as a time reference** has a **floating contour** in ion structures as well - this means that **any ion structure acquiring non-inertial mass** must have **the same time that is clocked by the life support system.** Accordingly, all this is taken into account in the "SvetL" Complex, **when installing CERTAIN "SvetL" PROGRAMS in IT**, in accordance with the demand for time, place of application, execution tasks and a specific individual (**owner of the Complex**).

As for **the EARTH**, when considering the location of the magnetic axis, the following was found:

- England and Australia, unlike RUSSIA, are "**floating continents**", that is, they have a sliding basis of adhesion to the backbone (plates), so their "smooth movement" does not lead to changes in ionic structures.

The usual displacement is centimeters in hundreds of years.

The appearance of extraneous structures on Earth (which do not fit into the current life support system, and especially recently), led not only to **the formation of proton structures**, but also, to a change (shift) of **the clock window**. Measurements **carried out during the period from 1995 to 1998**. (and this can be said **OPENLY** today), showed a **significant shift in the clock window** relative to **0 time**. **N. Levashov** also "**drew attention**" to these "changes", reflecting this in his works (those who have not read or have not found it – we recommend **REREADING CAREFULLY**). In various modes of operation of life support systems, the shift of the clock window is **from 5'38' to 5'58'**.



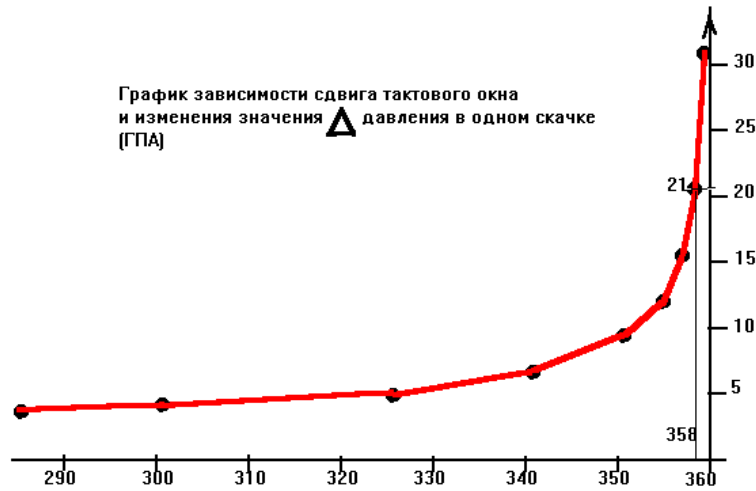
Whether it is a lot or a little is clearly seen in a simple example.

Consider the change in **intracranial pressure in Humans** (genotype 4XX). The **jump in external (atmospheric) pressure** occurs only at **0 time of the clock window**, that is, only at the beginning of **each clock cycle (every 15 minutes)**. The pressure may not change, but if it changes, then it does so only at this time. As a rule, a **pressure jump** is a change of **1 hPA** (rarely by 2 or more). But this means that **the INTRACRANIAL pressure must also change**.

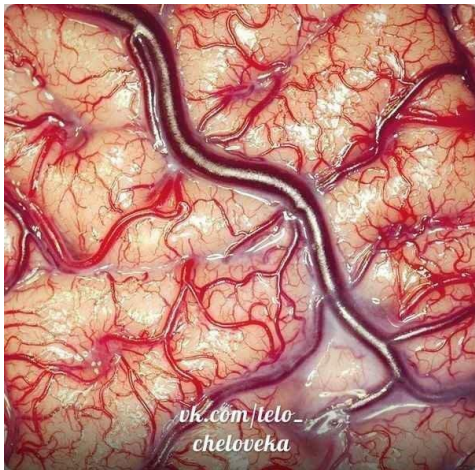
There is a concept of "**elasticity of brain vessels**". If the Δ value of the jump in the atmosphere exceeds the Δ value of elasticity, and this value is equal to the difference between the upper and lower limit, then the **RUPTURE of BRAIN VESSELS** occurs. But only if the **exact correspondence between 0 time and the start of the clock window, the ratio Δ is 1:1**. It should be borne in mind that **Brain structures** have pressure in higher



octaves, and a change in the clock window causes a different distribution of pressures in Brain structures.



Graph of the dependence of the shift of the clock window and the change in the value of the pressure Δ in the jump (hPa)



The jump, like the Carnot cycle in thermodynamics, has 2 phases. If the first edge of the jump has $\Delta = 21$ hPa, then **after 12 seconds** the second edge removes this value **by 9 hPa. THIS CAN BE EXTREMELY DANGEROUS FOR THE BRAIN.** In terms of time, both fronts **have a reaction time of 10-4 seconds**, that is, changes occur **faster than the reaction time of the ionic structures of the Brain**, which leads to **rupture of brain vessels** in the case of a small margin of elasticity. Since **mid-2013**, this has become a **"problem" of human life support**, due to the transformations that are taking

place in the Earth's Control System. It does not matter at what mode of the life support system the jump occurs and at what time of day.

It should be taken into account that if $\Delta_{atm} > 1$ hPa, then $\Delta = \Delta_{atm} (\ln \Delta + 0.31)$.

When the time difference of the clock window is greater than 358 seconds, a transition is made to an infinite compression of the potential charge, which entails a **RUPTURE of the BRAIN VESSELS** at any pressure drop. Well, an "attempt to change the ratio" for Δ **will lead to an earthquake of up to 16 points either in England or in Australia** (depends on the shift sign).

By the way, the wave from such an earthquake will reach a height of up to 350 meters, regardless of the sign. Why is this characteristic EXAMPLE considered?



To the fact that the above **DOES NOT THREATEN THOSE** who are **USERS OF the "Svetl" PROGRAMS** today. **THE COMPLEX ITSELF** "regulates" and will not allow such a thing. **BUT!** **THOSE USERS** who in their "experiments" go beyond the "permitted" (study the instructions for USE) with the Complex and "ATTRACT" to these "EXPERIMENTS" (for "DEEP KNOWLEDGE and MASTERING ...") widely known (in narrow circles) all sorts of "mediums", "clairvoyants", "psychics", experts in the "otherworld" and "generation switches – by vocation" (and there have been more and more of these lately), **can also get the opposite effect**, as with respect to **the vessels of THEIR "PRICELESS BRAIN"**, and "direct impact" on the environment in the **Region of residence**. Of course, it will not be an earthquake with a force of 16 points and a tsunami with a wave of 350 meters.



BUT! If THE HOUSE in which the "Owner of the Complex" lives collapses, you know – A SIMILAR EXPERIMENT WAS CONDUCTED THERE.

N.V. Levashov, in his speeches at meetings with Readers, repeatedly spoke and warned about the consequences of such "experiments" that people are trying to do) who do not understand the physics of the processes with which they are "experimenting", but whose ambitions (these people) prevail over their MINDS. Therefore, we found it EXPEDIENT to remind EVERYONE about this.

Let's consider separately the operation of the Earth's life support system in the mode of **using the clock window**. As you know, the time mode is set by the SUPRASYSTEM, where the breakdown of the daily time is indicated: **24, 60, 60**. Relative to this daily time, the breakdown of the life support system operation cycle is made. In total, 240 clock windows fit in the specified interval, each of which is used by the corresponding program of the life support system. In the clock window, accumulative and absorbing modes, **forward and reverse time movement**, time stop, and modes of multiplicative and additive reproduction of the charge equivalent are determined.

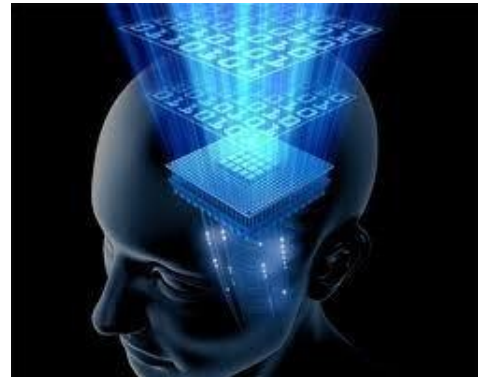


Each program of the life support system is designed to use a clock interval of 15 minutes on an absolute scale. What entails non-use of this time or the reverse effect - not enough time to execute the **clock program** - cannot be considered - it is already clear. Each clock cycle has a feature introduced by the corresponding program. This attribute must coincide with the semantic purpose of the current clock cycle. **The superposition of features opens a window for use.** This is what the **Complex** "uses" when **solving problems related to HEALTH improvement (and not only) The Owner Of The Complex.**



Note that the time of the clock window itself is constant and defined, but inside the clock window, time can go both forward and backward. Two adjacent clock windows can give 0 time according to the program (superposition of the forward and reverse directions of the magnetic pulse movement). With such a superposition at the border of adjacent windows, we can get a pressure jump equal to **2 hPA instead of 1**, and instead of executing **two programs**, we get an

unexpected pressure jump that is not provided for by any of the programs. If the magnetic pulse is **ahead of the clock frequency** set by the program, **time moves forward**, if vice versa, **then backwards**. THIS is extremely important in understanding the **functions implemented by the "SvetL" Complex** in relation to the so-called "CONCEPT" applied by **N. Levashov** and named by him as the "**DISCOVERY OF THE BRAIN**". In an ideally executed program, the time of the clock interval **coincides with the time set by the program**, which allows it to be realized relative to the **Owner's Brain, but not immediately**, but in stages and in a "stretch" in time, which is determined by the **GENERATOR of the COMPLEX itself, in accordance with the readiness** (preparedness) of the **Owner's Brain with the Complex**. In some cases, multiplicative and additive modes of program execution are used.



Let's return, in our reasoning, to Earth.

Suppose that as a result of external influence, for example, from the gravitational reference point or proton formations (caused by errors in the installation of the life support system), **it is necessary to adjust the albedo of the Earth**.



Then additional programs are introduced that cut off the basic programs and enhance the effect in a multiplicative or additive version. These programs have their own time reference system and are intended only **for the purposes of adjusting the time standard** and not exceeding the albedo of the Earth in the current execution mode.

In this case, **the beat is divided in half** and has two times **of 7'30"**. As soon as such a separation becomes noticeable, any normal execution of programs **becomes impossible**, especially in the **so-called "dead window"**. This is a window that does not have a breakdown, but the time inside the current clock cycle begins to shift.

In terms of time, such a shift can be observed, for example, **for 5 months**. The time of the actual clock window begins to change, and no real program can be executed completely. Failure to comply with the program



entails **activation of proton formations and blocks the normal operation of the life support system**. This can now be observed on the territory of Ukraine, especially in relation to people living there. And this is an objective process of changing realities.

Note that **inside the new clock window, the time is determined twice, and in adjacent windows - four times**. This means a fourfold change in the structure of the potential and, as a consequence, a fourfold jump in density (pressure), not provided for by any of the sequentially executed programs. **The meaning of the mask (sign) of the beginning and end of the cycle** is lost, since only one goal **is pursued - to reduce the albedo of the Earth to standard values**. Is it possible to intervene in the work with a double clock and how to build relationships with potential compensation programs, their superposition and eventually return to the programs scheduled for execution?

1. The reference point of time on Earth.

As already noted, the plane of time (the magnetic plane) is based on England and Australia. Plus and minus time depends on the magnetic pulse of the clock window. Both England and Australia are "gently" crawling along the Earth in accordance with the constant change in the Earth's magnetic field. However, **over the past 3 years**, there has been a discrepancy between the speed and direction of their movement. If it is **possible to adjust the center of mass of England towards the North Pole by $20^{\circ} 36' 11'$** , or in the opposite direction **the center of Australia by $20^{\circ} 56' 33'$** , then **for the next 25 years** it is possible to compensate for the effect of the gravitational reference point. **Which is exactly what is happening now**. This is visually "expressed" in those "abnormal" processes that are observed quite clearly in these regions today (floods, temperature "jumps", abnormal "cloud glow", hurricanes and squally winds and similar "cataclysms" that are only intensifying).



2. Proton structures.

Precisely **verified location of proton structures**, their density and charge capacity allow for a set of measures to neutralize them, which will allow not only to continue the implementation of the planned programs, but also to gain time to adjust the life support system. **The number of proton structures does not matter.**

3. "SvetL" programs.



The **knowledge** of all the above processes made it possible to make sure that the most important thing when "installing" a "Dark Matter" Generator (according to N. Levashov's terminology) is **both the shape and size of the "platform" for its "installation"**, and, as previously mentioned, **the PLATFORM created from those components that are most acceptable for this**. The materials for creating the platform were **described in detail and discussed in previous articles published in the section "Knowledge from Na_chala"**.

The shape and size of the platform are determined in strict accordance with the formula of the "golden section" and **the Native form of the transmission of information**, which today begins to occupy a **predominant and dominant place** in the processes initiated by the Control System, relatively "imputed", at one time, by the Ebrov Control System. The **study and COGNITION** of the transferred archive of **the HERITAGE of N. Levashov**, in accordance with **his approved plan for the development of the "SvetL" PROGRAMS**, expressed in digital volumes of the information component, with the "filling" of Programs with a specific goal vector within the framework of solved and demanded tasks, **allowed for us today to create a more efficient and powerful "SvetL" Complex. The first stage of the application of this "improved" Generator capability with "new" Programs, on the new platform of the "installation" of the Generator itself – we have provided you with for use in the form of so-called "SvetL Bracelets" (SLN).**

The **results** of the "recovery" and "stabilization" of the **Users' condition** speak for themselves. All this allowed us to "**move forward**", both in the **knowledge of the HERITAGE OF THE GREAT RUSSIAN SCIENTIST – Nikolai LEVASHOV**, and in the **practical application of HIS TECHNOLOGIES** related NOT ONLY TO THE IMPROVEMENT OF HUMAN HEALTH. More about this – in the **FOLLOWING ARTICLES**.



For the participants of the "SvetL" programs, what is useful to know and understand?

(Continued)

All scientific discoveries of **Mankind** are what we **were "allowed" to do, nothing more**. Because almost all the major discoveries in the universe around us are nothing but a "game of invaders" with a primitive human individual. It's like in kindergarten, children are thrown more and more new shapes of cubes so that they "accidentally" assemble **a given figure**. And this is declared the discovery of the law and new knowledge!



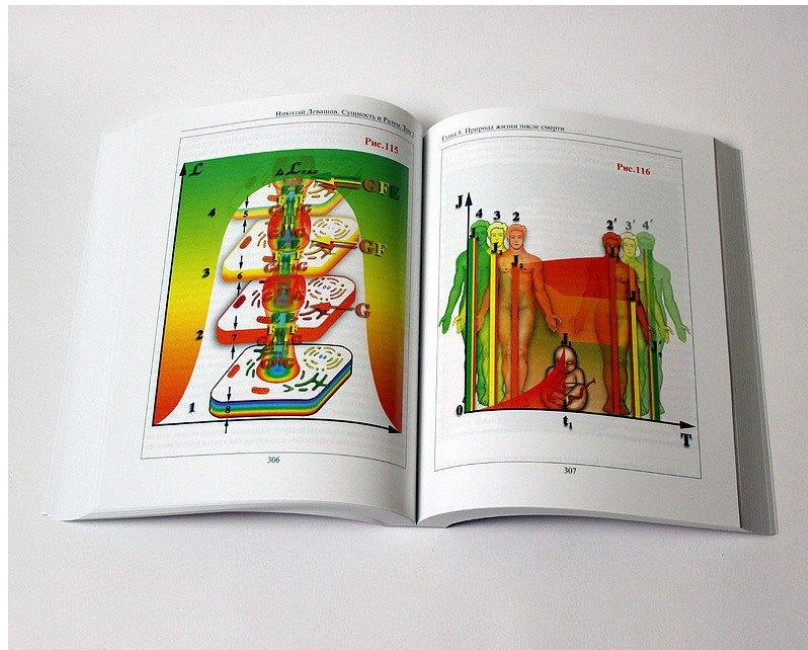
In order to control the knowledge, put into Man from the outside, it was necessary to deprive him of his inner knowledge. And it is not so easy to deprive Man of his inner knowledge. The control system of the "invaders" did it for 20,000 years and **still failed**.

The world around us is not separately something material and ideal - it is a single whole, just this world is expressed by a different set of frequencies. That's the only difference. And in

their perception, they created (imposed) illusions of the materiality of the world on a Person and separated this world from his mental and spiritual activity.



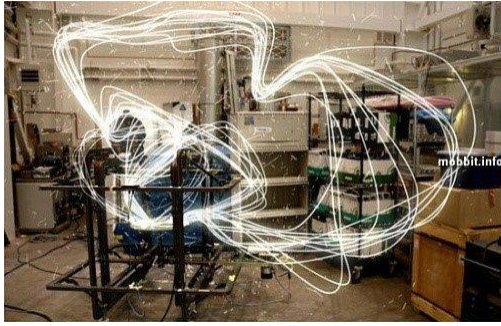
Earlier, before the invasion, our Ancestors did not have this perception of the duality of the world (we cannot give the name of People or Man to our Ancestors, because Modern Man (rather still people) compared to a Reasonable Ancestor, this is "**a monkey compared to a Man**"). And this lowering of our Intelligent Ancestor to the level of modern Man was done by **external Forces**. But today everything is changed. Today we are from people, in the "shortest possible time" we **must become Humans**. This is possible only through **KNOWLEDGE and COGNITION**. And today **NEW KNOWLEDGE and NEW TECHNOLOGIES, left to ALL of US, are helping us in this....**



MAGNETIC, ELECTRIC AND GRAVITATIONAL WAVES

1. Magnetic waves.

Magnetic waves are an integral part of life support in Space. These waves are embedded in the atom, and at a standard atom have a wavelength of 300,000 hertz. But there is no such atom, so the wavelength in an atom can vary from 300,000 to 875,000 hertz. This happens by changing the shape of the lattice (the anti-lattice does not participate in the shape change). But when the waves are added together, a spectrum appears, these are **gamma waves, which are called magnetic waves**.



This is inside the atom, and outside there can be frequency splitting, and this is used in pyramids. The maximum frequency that can be reached is 875.000.000 Hertz. Magnetic waves are quantized by 4 (300.004, etc.). This quantization is a function of the atom, but it is possible to do quantization 1, 2, 3. Magnetic waves always have one parameter - **amplitude - an elastic standing wave with amplitude.**

The minimum power of the magnetic field is the field in a standard atom. **The material carrier of vibrations is the atom.** When an atom is created, an oscillatory circuit (a kind of magnetron) is introduced into it. The magnetic field can only be positive (our "magnets" are the property of materials to have a gravitational attraction). Once the field is positive, the desired power is achieved due to the amplitude. Due to the amplitude, we have a magnetic field cord that rotates according to the rule of the gimlet. The rotation speed (in a standard atom) is 300,000 rpm. These vibrations have their own spectrum, which is taken as the spectrum of an atom. ***The field vector in a standard atom is normal to the electric (and gravitational) field vector.***

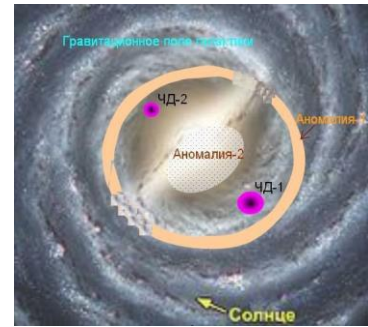
In this case, we have the state 90° (E - N). Other dependencies are considered separately. In an atom, **the direction of the magnetic field vector does not change when the lattice size changes.** This is an important position in **understanding the basics of generation processes in the "SvetL" Complex.**

2. Electric waves.

The electric field is **an integral part of the life support protection system**, and this consists in the fact that a certain electric field for the grid is created for life support, **to remove this field is enough to destroy a living cell.** The electric field can be **both positive and negative** (this is the potential). The power of the electric field **is achieved by potential, not amplitude.** The earth has no electric field, and all life on it is created artificially. At birth, a certain potential is laid, which is consumed **during life and maintained by the normal composition of trace elements.** In a standard atom, this **potential = - 3618.28176246 $\cdot 10^{-18}$ volts / cubic meter.** In the anti-atom we have a different sign of potential. The potential of the **electron atom = + 47621856210665 $\cdot 10^{-19}$ volts / cubic meter.** **To ensure life, a negative electric field** is used, and since the radiation of the Hartmann zones is positive, the potential is removed from the living cell. **The minimum potential for human life support = - 6438.458723 volts/ cubic meter.** (minimum reserve of vital forces).



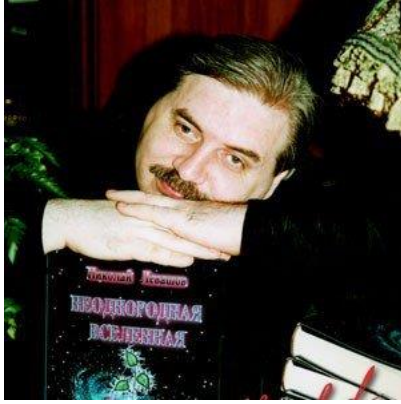
Maximum potential = - 12762.768621 volts/ cubic meter. To calculate the actual potential, it is necessary to use coefficients for the number of years, height, weight, etc., in addition, the conditions of the terrain, which also affects the change in potential (for example, the presence of deposits). Therefore, **the primary moment of "turning on the COMPLEX, relative to the REGION of RESIDENCE OF the OWNER, is important. Most of all, the potential removes gold.** That's why Pope Francis WORE the RING of the "FISHERMAN" (the sign of the current POPE) made of SILVER, which "surprised many, and not because of his MODESTY.



All metals, which are conductors of electricity, remove the potential to one degree or another. This has already been stated in the articles "Knowledge from "Na_chala"". When creating a living cell, the potential increases, the sizes of the proton and electron shells of the atom change, but the bonds do not break, the wavelength of the bond between the surfaces increases. The electron surface is a protective surface for the atom and has its own potential, **different from the potential of the atom.** The potential has been created for the Earth **to provide life on the surface (up to 18 km deep and 124 km above the Earth).**

3. The gravitational field.

The gravitational field is **an integral part of the life support system.** In the atom, this field holds the lattice and the anti-lattice, the direction of the field vector is from the neutron to



the anti-lattice, value = $48266597 * 10^{-18}/\text{meters}/\text{sec.}^3$. The **electric field** reduces the **gravitational potential of the atom**, and the total gravitational potential is equal to the difference of the fields reduced to **amperes *meter/sec.³**.

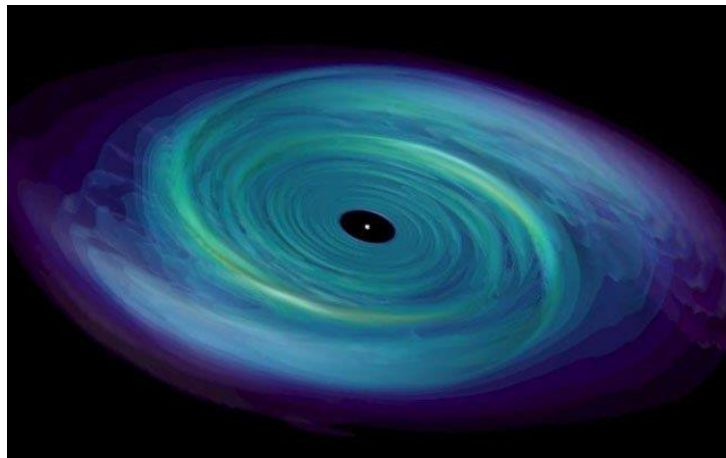
$1 ? = 6.432576 * 10^{-10} \text{ volts}/\text{m}^3$ v, $1 ? = 88.824376 * 10^{-10} \text{ m}/\text{sec.}^3$. The Earth's magnetic, not gravitational, field creates a gravity acceleration of **9.81 m/sec.³**. **The value of the gravitational field is enormous. It is only positive (as a potential).** This potential can be used to change the properties of other fields. This is what happens during the "work" of the "SvetL" Programs, regarding the owner's RECOVERY. To remove **the gravitational field of the lattice**, there are certain frequencies of the gravitational field. And **not "abandoned PROGRAMS and algorithms"** for **"ON/OFF" "Generators"** (but in some places, **NOT OFF YET**).



The formation of **Black holes** is a consequence of an **"earthquake" in Space**. A kind of "store" of atoms is formed, which is held by an **external gravitational field**.

A new planet or star is created from this "store" by generation. There are double, triple, etc., black holes. All this can be read **in the works of N. Levashov**, if of course you read, and not SCROLL through.

TABLE OF FREQUENCIES OF THE GRAVITATIONAL FIELD



No	Name	Frequency (hertz)	Frequency range	Note
1	Gravitational field for destruction lattice of an atom (neutron)	75216398	+84	The power of destruction is equal to the gravitational field of the atom minus the power of the electric potential of the atom.
2	Gravitational field for the destruction of the gravitational field of the anti-lattice (neutron)	329843	+2845	This field is created by all types of communication (modern). After the destruction of the anti-lattice, the cell becomes dead.
3	Gravitational field for the destruction of the antineutron lattice	5424982	+56	
4	Gravitational field for the destruction of the antineutron anti-lattice	231865	+863	This field is created by all types of communication (modern). After the destruction of the anti-grid, the cell becomes dead.

Frequencies that destroy the cells of the human body without external influence.

No	Name	Frequency, hertz	Note
1	"Electricity"	50	Side lobes up to 343875 hertz . Weak, but constant impact. It acts on all cells of

			the body (Sitting with a lamp for 8 hours daily for 1 year shortens life by 10 years).
2	"Electricity"	60	Side lobes up to 475268 Hertz. The action is stronger. In both cases, the "SvetL" Complex "saves" (removes the side lobes).
3	Cellular communication	326424 +-742	Instantly destroys neutron and antineutron anti-lattice (deadens cells)
4	Satellite communication	431764 +-230	The same
5	Gasoline during combustion	328286 +-108	The same. Constant "sitting" behind the wheel for 4 hours a day for one year shortens life by 3 days.
6	Transport (metro)	50	Gives the same frequencies, but more powerful in effect. Riding the subway 1 hour a day reduces life by 1.3 hours.

The gravitational field is the main field in human life. It is it that supports life - and this is expressed in the fact that the gravitational field creates conditions for the existence of living atoms. A person cannot have grids with a mixture of fields, for example, there cannot be a separate electro-gravitational field. To destroy a person, it is enough to destroy an anti-lattice (neutron or antineutron).

When the vectors of the magnetic and electric (or gravitational) fields are directed normally to each other, we have static fields, and along the circuit (wires) the magnetic field propagates like filling balloons connected in series with each other with air. The speed of such propagation is small and is 64234.356973 meters/second for an ideal conductor. For copper, this value is 38429.5762163 m/sec. To increase the



speed of the magnetic field along the conductor, the angle of the magnetic field vector is changed, and an oscillatory mode **can be created for the magnetic circuit. An ideal conductor in which there are no neutron and antineutron gratings. These grids are created by an earthquake along the cord.** This could be observed in the Far East, before the flood. The maximum angle that has now been reached = 21° (relative to motion), while the speed of the magnetic-electric or magneto-gravitational pulse is 751.973.458.762 meters /second. **In this case, we have a pulse field of the corkscrew type.**

To destroy an object, it is necessary to give the frequency at which the object is moving, **But this is Closed information.** To destroy on the spot, it is **necessary to spend 5 to 9 times more power.**