

## 2.06. HEALING ACCORDING TO THE LEVASHOV SYSTEM: MERGING OF SCIENCE AND SPIRITUALITY

Author: [Bittner, Elena](#)

### NICOLAI LEVASHOV 'S SYSTEM



*Nicolai Levashov's system is a complex, multi-level healing method that can be used to treat most existing diseases. Perhaps this is the "medicine of the future"?*

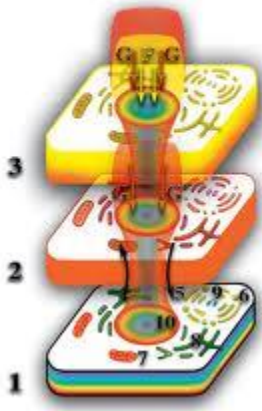
<http://www.thenewknowledge.com/>

The work of the Russian scientist, theoretical physicist, healer, academician Nicolai Levashov is the latest development in the field of alternative treatment. Levashov's system combines spirituality and science into one precise multidimensional healing module. In developing healing skills, I have studied and practiced with Nicolai Levashov for more than ten years, and I find his HEALING SYSTEM very EFFECTIVE. The purpose of this article is, firstly, to look at this system from the point of view of its potential and the possibility of its application in terms of the growth of both human health and the acquisition of knowledge and positive mental qualities. Secondly, to give an overview of my understanding of Levashov's theory about the heterogeneity of space and how it relates to the spiritual and subtle-energy component of healing.



To achieve the goals of this article, the concepts of "spirituality" and "subtle energies" used in it will be synonymous with "primary matter" according to Levashov or "dark matter" according to the definition of modern science. Nicolai Levashov has a degree in theoretical physics and in Russia also taught his method to students with medical education. His American student, MD Barbara Koopman, called his concept a "unified theory of the world."

<http://levashov.org/Articles/Healing.html> Levashov explains and proves on the basis of physical processes, that the human body has seven energy levels: physically dense and six "thin" energy levels. He calls these levels: etheric, astral and several mental levels. The mental bodies of a Person have four levels of information perception and have a functional capability for further spiritual development and support for the further EVOLUTION of the Higher Consciousness of a Person. The development of mental levels may differ from person to person. The etheric and astral levels repeat the anatomy and physiology of the physically dense Human level.



Healing according to the Levashov system occurs mainly at these two levels. In addition, Levashov believes that the cells of the body have different levels of evolutionary development. For example, stem cells have a physical and etheric level, while brain neurons potentially have all seven levels. There is a channel for connecting the cell nucleus from the physical level to higher "subtle" energy levels. Work at any level affects all other levels, that is, the human BODY forms a single "spiritual" system - the BODY-ESSENCE.

So, one of the pathologies that is observed quite often is arthritis of the hip and knee joints. This disease is caused by a blockage in the kidney filtration system: toxins are removed from the blood improperly, and the brain tries to purify the blood and deposits toxins in the joints. This compresses the fluid of the joint and contributes to its stiffness and swelling, and consequently to soreness. The program for changing the pathological chain is designed in such a way that it contains the idea of unblocking the kidneys and thereby healing arthritis.



## ENERGY SOURCE

Where does the energy come from in order to achieve healing? It is here that Levashov's new theory in physics merges with the healing process. Levashov presented a coherent theory of the universe and logically proved that we live in an anisotropic universe that contains



"mountains and valleys" (waves) together with seven forms of primary matter. "Anisotropy" here means that space is not homogeneous and uniform in all directions, and matter materializes differently in different areas of space. This contradicts the traditional point of view that space is homogeneous: in an isotropic universe, that is, that the properties and qualities of matter at any point in space manifest themselves in the same way. Primitivism of binary logic thinking with a limited number of options and choices. mutually perpendicular directions of space have potential consequences – the FALLACY of IDEAS about the Universe and life. But the essence of this vital difference in perceptions will be discussed later. When a "valley" in space

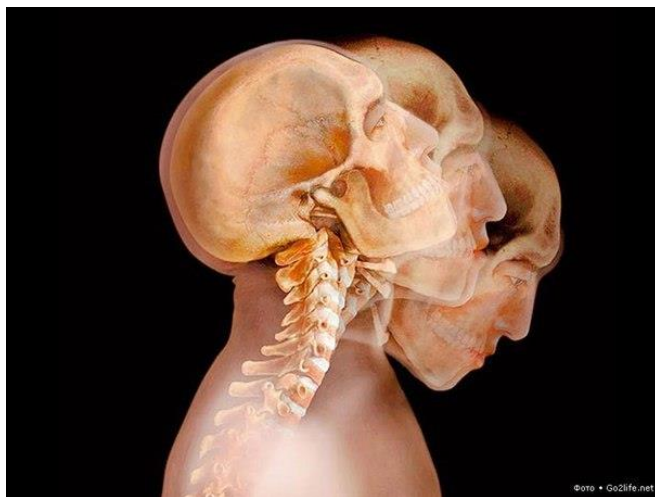
reaches a certain mathematically measurable depth, it attracts primary matter, and a process

known to us under the term "gravity" or "gravitation" takes place. The fusion of various forms of primary matter under the "force of gravity" creates a new, hybrid substance. A by-product of this unification is the flow of energy. This process is used in treatment programs aimed mentally at the client, that is, the built-in programs cause the necessary changes in space, and as a result - the flow of energy. Scientists from Princeton University presented the results of their research, which prove that the so-called orgone (ENERGY) is considered a substance that can influence matter.

### **AN EXAMPLE OF HEALING.**

Now let's move on from explaining Levashov's theory to its practical application.

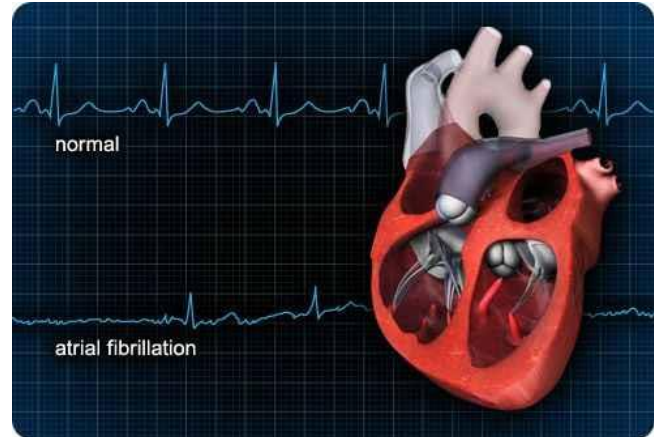
Dr. Richard von Fuchs, a professor at the University of Western Hungary, was prone to attacks of dizziness. These seizures were so severe that he had to be taken to the hospital by ambulance. He was hospitalized and was examined for five days to identify possible diseases. The final diagnosis was Meniere's syndrome, hearing impairment and balance disorder, which is usually associated with inner ear dysfunction. He was assigned to take four different types of medications, and the hours of his daily activities were significantly reduced. Dr. von Fuchs contacted my London office for help from his home in Sopron (Hungary). The first step was to create a holographic image of Dr. von Fuchs. This was done by telephone contact. Then I scanned this image with my "mental scanner" to "see" the problem areas. It is extremely important to scan with an open mind with emotional balance, otherwise you will run the risk of "finding what you are looking for", and not what "is actually happening".



I felt a strong disturbance of the "subtle energies" in the area of his neck. The neck muscles were severely contracted and the vertebrae were not aligned. I was able to determine that the problem was in the cervical spine and was the main cause of dizziness. The pressure in the outer and inner ear greatly disturbed the balance of flows in the neck area, which led to dizziness. To heal this problem, it took a program to create and visualize a perfectly smooth neck. This program was mentally

directed to the holographic image of Dr. von Fuchs. I reached him in Hungary, and cured his ailment – dizziness no longer bothered the Doctor. In addition, he confirmed that he had previously suffered a serious neck injury.

Dr. Kratz stated: "I really think this type of treatment is the medicine of the future. These interesting confirmations about the influence of Levashov's theory on health-improving processes in the human body may have a future if it is proved that this is correct. Thanks to LEVASHOV's holistic SYSTEM, the spiritual growth of a Person goes much further beyond healing from our health problems. N. Levashov's statement that the Universe is anisotropic, in contrast to the theory of isotropy, has been confirmed in a number of recent scientific studies of the Cosmos..

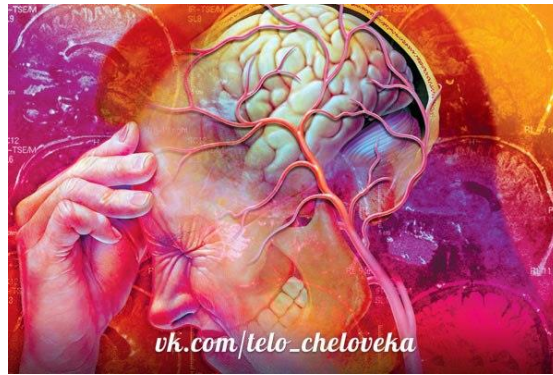


As mentioned above, in the current scientific theory of the isotropy of the Universe, binary logic of thinking operates with a limited number of variables - this is the "yes/no" approach. In an anisotropic universe, there are an infinite number of variables that can be brought into the equation. Levashov, apparently, wanted to say that we think in separate categories, which differ from continuous logical thinking based on a more complete foundation of knowledge about the nature of the universe. He believes that the cosmos controls the change in the functions of a living cell, so the healing process can be explained by the following example.



Many people suffer from migraine headaches. Levashov's system successfully cures migraines, as he discovered that the headache is caused by an imbalance in atmospheric pressure and in the head, as a result of which the blood vessels of the head contract. As far as I understand, medicine believes that headache is caused by narrowing of blood vessels, but it does not consider exposure to atmospheric pressure as the cause of migraines.





We live in a very interesting time of Big Changes.. We've been waiting for this for a long time!

**Robert GINSBURG**

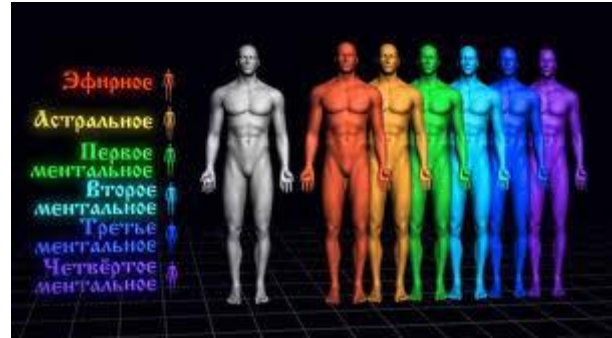
Translated and edited by Elena Bittner

<http://www.thenewknowledge.com/docs...ashovSystem.pdf>

**SUPPLEMENT.**



"N. LEVASHOV'S SYSTEM" found its embodiment in the "SvetL" technologies, which HE created and left to us for THEIR DIRECT USE for good, and THEY are named so, in honor of Nicolai's WIFE, COLLEAGUE and faithful assistant, Svetlana Vasilyevna Levashova.



As the author of the article correctly noted, a Person has POTENTIAL. This potential is the totality of all the bodies of his ESSENCE, and the more bodies (energy structures) the ESSENCE has, the more powerful the manifestation of programs created by the thought of such a Person in our physical reality. The programs created by Nicolai LEVASHOV do not disappear anywhere. After all, at the level of planetary structures, they have a stable position, being formed by all seven primary matters into a system that works to restore the integrity of a living human organism. But a living organism, being in interaction with the energy of the matter of the Big Cosmos, is subjected to constant losses of accumulated potential – the entire parasitic system of society is built on this "removal of living potential" from a Person. The loss of vital potential leads to the fact that the cells of the body wear out and cease to generate the necessary PM to saturate the ESSENCE bodies and restore healthy cells. **Therefore, the healer** (if he is capable, trained and able) by generating the necessary frequencies or primary matter, restores the balance of flows, which leads to recovery.



Knowing full well that there are not enough healers for every person in need, LEVASHOV created carrier devices on which Generators of "dark matter" were installed, and which are able to increase the potential of the ESSENCE. For quite a long time, a carrier was selected for the installation of such Generators. Quartz watches on liquid crystals were tested, then the generation of a psi field on plants was tested. However, the best carrier (at the

time of creation of the Device) was a computer tablet, since it could serve such purposes for a longer time.

What is the peculiarity of such a carrier? **Firstly**, it allows a person to independently choose the desired sequence of health functions and select the intensity of exposure. **Secondly**, the generator was installed **on a Quartz chip and on silicon in the Complex**. Silicon, along with other elements forming the basis of living matter, has a certain crystal structure, which makes it possible to "open" a channel to the "thin" material levels of the Planet, since the organization of silicon plate atoms is subordinated to the spatial structure of the dodecahedron. And this is the structure of the space of the mental level of the Planet. It is at the mental levels that the **Programs created by N. LEVASHOV begin to work**.

This is due to the structures of the Brain. As noted by R. Ginzburg: *"stem cells have a physical and etheric level, while **brain neurons potentially have all seven levels**. There is a channel for connecting the cell nucleus from the physical level to higher "subtle" energy levels.* Work at any level affects all other levels, that is, the human BODY forms a single "spiritual" system - BODY-ESSENCE." You should pay attention to the word "potentially"! This potential depends, as I have already mentioned, precisely on the quantity and quality of the ESSENCE bodies accumulated in the course of a Person's life. Therefore, the effect of the "SvetL" Complex manifests itself in people in different ways, which confirms the sequence of recovery: first, higher levels are put in order - cells that have more "floors" or "thin" bodies begin to recover faster. Their structures are saturated by means of a Complex with forms of matter that form the mental levels of the Planet.



As we know, it is there that the ESSENCE of modern Man has a shortage of primary matter, and such as especially G and F (forming the foundation of the ESSENCE), and it is they who form the etheric and astral body of a person, contributing to the proper functioning of the cells of the body. On the other hand, we know that during the development of an embryo of any vertebrate species,

the cells of the nervous system are formed first of all: the spinal Cord and the cerebral cortex. All other cells are formed taking into account the dimensionality set by this structure. The higher the level of development of the ESSENCE, the more perfect the genetics of the embryo should be.

**The "SvetL" Complex**, through the structures of the **Human Brain**, begins to "rebuild cells", and first of all the DNA of the nuclei. Cells regain the ability to regenerate and purify toxins more effectively. The Brain again assumes the functions of monitoring and controlling the

work of all cells. At the same time, it is necessary to take into account the cycle of cell replacement. The order of restoration of organs and systems is similar to the order of their construction during the development of the embryo.

But let's return to the main question of this supplement to the main article: "why, being created during the scientist's lifetime, did they receive not only an independent life after his departure, but also further development based on LEVASHOV's KNOWLEDGE?"

If the program does not disappear anywhere, then what is the GENERATING ELEMENT? After all, the Generator does not have a **"material" structure given to us in sensations** (by definition of dialectical materialism). **It cannot be copied, it cannot be stolen, it cannot be "turned off" and "turned on".** *It can only be "attached" to a physically dense medium.* But this requires KNOWLEDGE and a Person who can **"connect" the Generator of "dark matter" with a Program and a carrier object with the power of thought.** Just connect two links!!! And it is not necessary to have a cosmic superintelligence for this. But it is necessary to have the qualities of a Person with the concept of HONOR, CONSCIENCE AND RESPONSIBILITY. And this already suggests that the mental levels of the ESSENCE of such a Person contain the necessary qualities to connect these links. **And "codes" and "switches" are simply not needed for this!**

For example, let's recall an excerpt from the "Source of Life" - 8:

*"A few years ago, Svetlana chose several apricot trees in one of the nurseries for fruit trees and... they had **not yet been transferred to the orchard within our possession. The trees were ONLY SELECTED by Svetlana among other exactly the same trees!***

*So, **only the apricot trees selected by Svetlana** (*Prunus armeniaca* L.) **have already faded in March**, and in the first half of April there are already quite large apricots on the branches, still green (Fig. 237)!*





And on the other apricot trees in the same nursery, flower buds **have not even appeared yet**, since the flowering of apricot trees begins in the second half of May! Having **selected some trees** in the nursery, **Svetlana thereby mentally connected them with all the other plants in our possessions**, and the "psi-field generator" or "dark matter generator" **at a fairly large distance** from our possessions **all this time had a selective effect ONLY ON the SELECTED TREES**, while all the other trees of the nursery continued to "behave" the same way as in the rest of the world!

Thus, the psi-field generator can act selectively on any plant and most likely at any distance, without affecting

even a neighboring plant with its influence. ***It is only necessary to connect the desired plant to the psi-field generator, and even a telepathic connection is enough! You just need to know how to do it...***

NICOLAI LEVASHOV has created programs that, with the growth of qualitative structures of the Human Brain, begin to generate those primary matter that are necessary **at this stage of the development of the ESSENCE** for the synthesis of substances necessary to preserve the structure of the cell and for its rejuvenation. **This is a completely new approach to the improvement of a Person and the development of his MIND.**

Together with the "building up of the structures of the ESSENCE", or rather, the BRAIN, **with the "SvetL" Complex**, a person acquires an infinite potential for development and a healthy life for many hundreds of years. **"HUNDREDS OF YEARS" (do not forget that the life path of a human cell, under ideal conditions, is 35,000 years) - this is a realistic PROSPECT of**

the very near future. THE "ADDITION" OF DECADES to the life span that is "measured" to a Person today (not exceeding 80-95 years, at best) this is already an absolute reality for those who have started using the "SvetL" Complex and the "SvetL" Program today. This is something that modern science cannot even dream of, which does not take into account the cosmological role of a living organism.

RNTO

Elena Bittner, 21 December, 2013

To be continued...