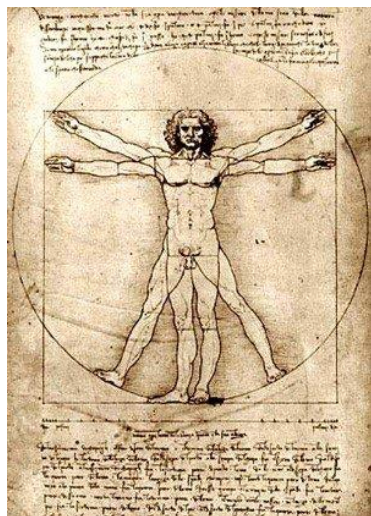


## 1.28. Additions to the knowledge of the users of the "SvetL" programs

Author: [RNTD Team](#)

### Simplified basic "block diagram" of the functioning of the Human body

by A. Khatybov:



The **BIOLOGICAL OCTAVE** is the frequency **CHARACTERISTIC** of the **BRAIN** connection of a specific biological object under normal ratios of the basic parameters of life support (type I). Type II - the maximum frequency of metabolic processes.

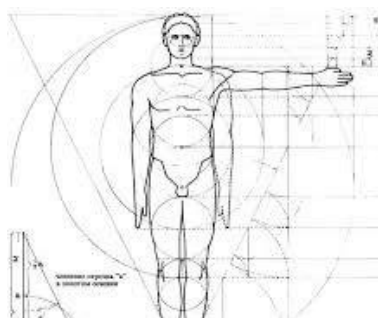
An **INFORMATION OCTAVE** is a bit of **INFORMATION** perceived by the visual sense organ (in 1 second for 64 octaves). For the Earth - max 512th octave.

**COLLIDERS OF LIFE** are colliders of the Life Support System, which are located under the **NORTHERN** and **SOUTHERN** Polar circles. They provide the tact necessary for metabolic processes (all people on Earth **have approximately the same**

**heartbeat**).

Colliders are connected by meridians (**there are 8,640,000 of them**), along which structures are pumped.

Nodes are formed with parallels - Hartmann zones (gravity node), Curie zones (energy node), X-ray zones (radiation node). Curie and X-ray zones are **NOT REGISTERED** by devices, but insects recognize them.



The **BIOLOGICAL BODY** or **BIOSTRUCTURE (SHIRT)** – this should be understood as a "shirt" attached to the Brain, capable of being controlled by it and used to involve it in a complex of executive processes, the endowment of which is carried out by a **Control System through the Brain**. The biostructure is energy-constructive, formed in such a way that it can exist only in one layer of space. *In today's medicine*, as a science, little is known about the biostructure, only on the basis of the knowledge and experience of pathologists, i.e., very superficially, both according to the principles of general structural construction of the organism, and on the management of its functioning as a whole,

as a system. The absence of an instrumental base in the space of an unobservable and imperceptible reality did not allow one to acquire the necessary knowledge, and this isolation from the knowledge of this was especially controlled, as a taboo, by the old System.

It makes sense to make some clarifications about which layer of space we are talking about, in which a Biostructure can now exist. To do this, it is necessary to introduce a certain conditional unit of space, – an octave (as an indicator – "**n**") **of the formula expression of a certain energy of a certain frequency ( $f = 2n$ )**.

The octave and the corresponding frequency of energies determine the specific design of the construction of space. This frequency of beam waves, characterized by 8 parameters, determines a set of conditions necessary for the existence of a living cell in a given concrete space. **The space of the current existence of Biostructures is 64 octave ( $n = 64$ ), as the lowest level for a living cell**, if I may say so, at the same time it is also designated **as the space code (64 code)**.

The acquisition of such a level of material condition, i.e., such a level of space with the corresponding formed conditions and the current states of a living cell in the 64 octave or with the space code 64, is the consequences of the intervention carried out by the Ebrov System, which, along with other consequences, will be eliminated during the transition period.

It should be noted that the ***division of spaces into layers*** is a completely nonpublic topic for a certain current period and since it is outside the scope of the study, we will skip judgments about this and touch only on what is now permissible.

***Any inertial system changes its state only under the action of a magnetic pulse (MI)***, divided by analogy with the decomposition of vectors into electrical and gravitational structures according to a strictly quantized pulse scale. The magnetic pulse, which alone brings any inertial system into a state of motion, is either an accumulated intrinsic or external, sufficiently powerful potential to bring the system into a state of motion.

All inertial systems can be structurally decomposed using **OCTAVES**. All octaves are written in a certain sequence. ***For example***, the boundaries for the controlled functioning of the **PANCREAS** of people is defined by the limit of **octaves 47-48**, so the specific codes of the controlled states of their cells lie only in this range. The octave of Brain communication **for controlling the functioning of the pancreas corresponds to the value 47.45004500**, for the space code 64. The pancreas, as a **CONTROLLED** functioning system, is ***inherent only in the biostructure***, the base of the octave is tied to the Euclidean space for the Earth.

The Brain, having sufficiently high octaves of communication, *performs control operations with specific structures of internal organs that are at a lower level of octaves of their*

*magnetic impulses*. The ratio of descending values of octaves, from the highest to the lowest, i.e., ***from the Brain to the cells of any of the internal organs, is an obligatory hierarchy, which is endowed with a Biostructure and not in a random, but a given strict ratio of octave values.*** In the case of any even insignificant deviations from the established octave values, this individual will not be accompanied by control from the System and the System is always released from such an individual.

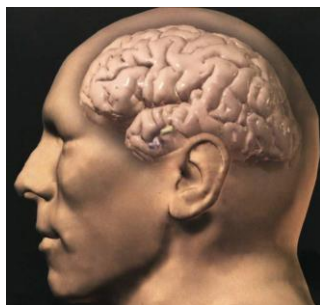
For the Euclidean space, there is a strict hierarchy constructed as a descending series of MI, ranked by four groups, or more correctly defined – in 4 rows, namely:

- **96, 84, 72, 64, 56, 48, 44, 40** – a series of higher order, or a number of brain functions, including the human brain;

- **44, 40, 36, 32, 28, 21, 18, 16** – *a number of octaves for specific biostructures (BIOS), for example, brain cells, cells of internal organs*. The number of decimal places is 8, for example, the connection of the Brain with the pancreas is **47.45004500**, and the feedback with the Brain is **43.12509750**. The Brain is built in such a way that a lower octave level cannot have the functions of controlling the Brain, i.e., ***dictate anything to it, and the Brain itself can and necessarily reacts to "signals from below", i.e., to incoming information from the octaves below;***

- **18, 16, 14, 12, 8, 4, 2, 1** – a number of octaves for intermediate structures, control functions within the cellular level, including control functions for the movement of liquid media between internal organs;

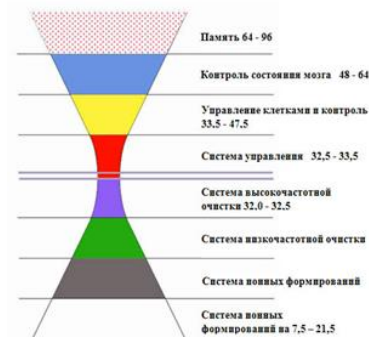
- **"-1, -2, -4, -8, -16, -32, -64, -128"** – a number of octaves for living objects, **except for the "shirt" of people.**



**The BRAIN is a CONTROL ROOM**, i.e., a computer center or a system that sets the clock.

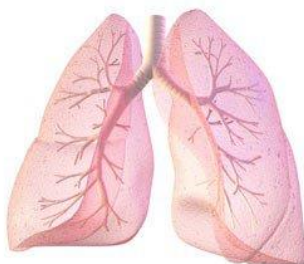
The Brain in our presentation, or imagination, or touch, does not exist. **We cannot examine the Brain under a microscope, cut it with a scalpel. We don't know what a BRAIN is at all.**

All information about the structures and properties of living cells is contained in the Brain, not in DNA, since in the second case **there are only some incomplete copies**. In addition, the DNA structure is a kind of "conveyor", on the basis of which only the assembly of "products" is made. The information is embedded in the "products" themselves. Conventionally, the hierarchy of the main functions of the brain by octaves is shown in the figure. **The Brain is a very complex, complex, it cannot be created from "dust", as accepted by the dogmas of modern**



**Memory 64 - 96**  
**Status monitoring 48 - 64**  
**Cell management and control 33.5 - 47.5**  
**Control system 32.5 - 33.5**  
**High-frequency cleaning system 32.0 - 32.5**  
**Low-frequency cleaning system 32.0 - 32.5**  
**The system of applied formations 7.5 - 21.5**

**science, since the planet Earth itself is supposedly assembled from cosmic dust, in their opinion. The BRAIN** is the result of a multimillion-year period of time (in astronomical terms of time) **OF the FORMATION of a BIOSTRUCTURE**, which led to its associated simultaneous state in three spaces (states), namely neutrino (higher), antineutron and proton, or ion.



The **LUNGS** are a power **GENERATOR** for the entire system. The work of the **LUNGS** is controlled by only the **BRAIN**, no muscles and ribs can move independently without control. There is no chaos in the body. It appears only in the absence of a Brain. No Brain will allow inhaling a mixture that is not intended for breathing. **The pressure** required for inhalation and exhalation is **created when executing Brain commands**, therefore, when exhaling underwater, when inflating balloons, etc., the pressure in the lungs is much higher than atmospheric (maybe 1.43 times). **The entire respiratory system is conditionally divided into 3 parts.**

### **1. Control of the inhaled mixture.**

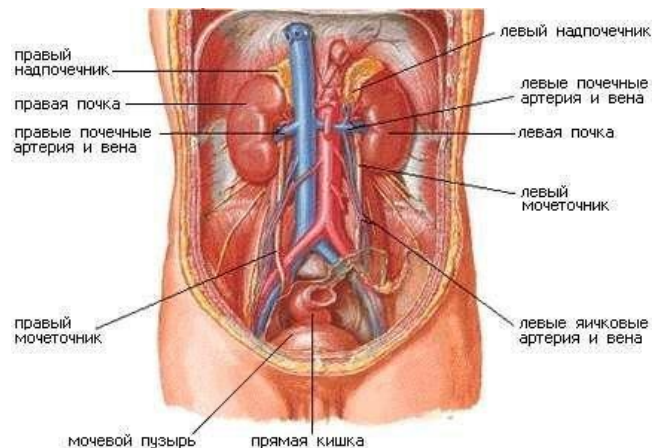
Everything that is attributed to the upper part of the lungs also has a non-inertial mass. These are tritium control systems. If the tritium does not have the frequencies to which the Brain is tuned, the air mixture into the lungs is not allowed. There should only be something that can be recycled.

## 2. Lung memory.

This is an automatic system tuned to the frequency that is the base of the Program (the Program was introduced at Easter. Now the input scheme has been changed). The Brain sets the upper and lower limits on the base, and the quantization limits on the remaining frequencies.

**Example:** if the base frequency is **71.450450**, and the limits are **148% and 12%** of the potential density (upper and lower, respectively), then the frequency that was used before entering the Program (**67.450450**) will have limits of **88% and 33%** of the potential density, and the duplicate frequency is **66% and 48%**. If there is no base frequency, the Brain establishes the withdrawal of potentials from the electronic layers of tritium from the cells of the body, which **leads to dehydration of the cells. No medications will help here anymore.**

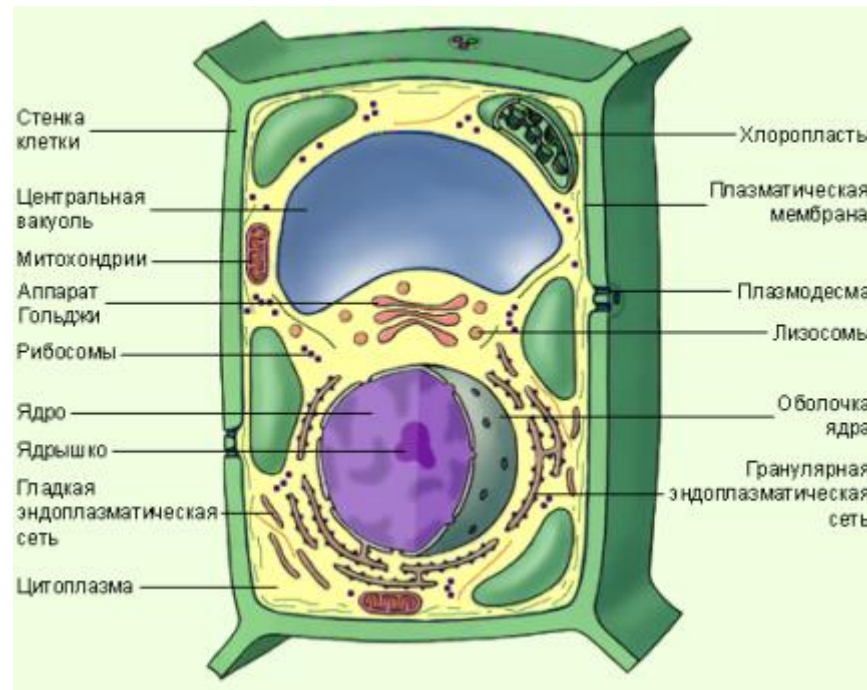
## 3. Exchange system.



правый надпочечник/right adrenal gland	левый надпочечник/left adrenal gland
правая почка/right kidney	левые почечные артерия и вена/left renal artery and vein
правые почечные артерия и вена/right renal artery and vein	левая почка/left kidney
правый мочеточник/right ureter	левый мочеточник/left ureter
	левые яичковые артерия и вена/left testicular artery and vein
	мочевой пузырь/bladder
	прямая кишка/rectum

The main element of the air mixture is tritium, which has 3 electronic layers (1, 7, 16 electronic layers). All gravitational (8 grids) outer layers have a potential density of less than **2%**, therefore, when weighing air, **TRITIUM** itself is not detected (it is practically a non-inertial mass). Spectral analysis also does not detect it, since there are no radiation frequencies. In 2007, **71 octaves** were “installed”, and it is she who occupies the upper electronic layer. The next **2 layers are octaves 67 and 61**. By the way, water also has a **71-octave lattice**. Metabolic processes occur by the decay of tritium and the formation of oxygen (non-inertial) with the preservation of the base octave. There are no barriers for a non-inertial mass, the decay is accompanied by the appearance of a new isotope of tritium, which is called oxygen. The

separately existing **pulmonary circulatory** system is designed **to form all metabolic processes**, while the pH of the blood plasma should always be within **6.88 - 7.45**. Note that the pH of the plasma varies within these limits from **0.5 to 8 seconds**. **The Brain** notes this change, and when the value of the lower limit + **0.26 (pH = 7.14)** is reached, the automatic device is triggered to take the next batch of the mixture. With lethargic sleep, this limit can be reached in a month, because there is no normal breathing in this dream.



Cell wall  
Central vacuole  
Mitochondria  
Apparatus  
Golgi  
Ribosomes  
Core  
Nucleus  
Smooth endoplasmic reticulum  
Cytoplasm

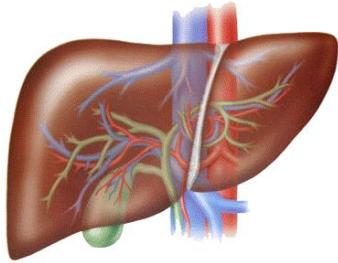
Chloroplasts  
Plasma membrane  
Plasmodesma  
Lysosomes  
Core Shell  
Granular endoplasmic reticulum

**CONSUMERS** are **CELLS**. Consumers, as the name implies, are constantly consuming something. In order for the consumer to consume, targeted (address) **DELIVERY** to the consumer from the warehouse of what he can consume is needed. i.e., targeted mailing of "sealed packages" (you can call them containers) with some content specific to each type/kind of consumer (you can call it food) is necessary.



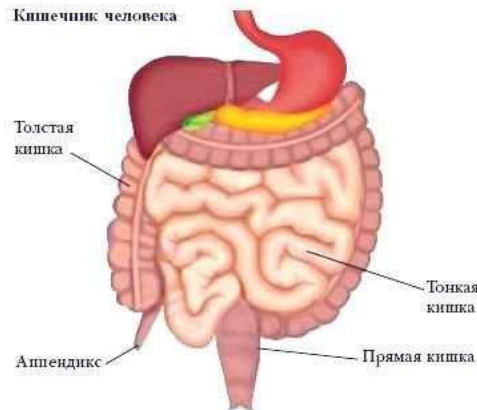
**The KIDNEYS and GALLBLADDER are FOOD production WORKSHOPS.**

**The LIVER is a WORKSHOP for the production of CONTAINERS.**



The production of containers depends entirely on the work of the catalyst production shop (housewives call this catalyst iodine). It should be especially noted that the catalyst produced by the thyroid gland and the one produced by Comrade M. Yu. Zurabov are not the same (like heaven and earth). During the production of a catalyst in the thyroid gland, regardless of the state of all other body systems, a constant temperature of **36.60 +/-0.06** is maintained (as in the manufacture of high-precision devices), which is necessary for the **LIVER** to produce lubrication (Mg2+). Only the presence of such a lubricant ensures that there is no friction in the vessels when moving.

**The INTESTINE is a WAREHOUSE.**



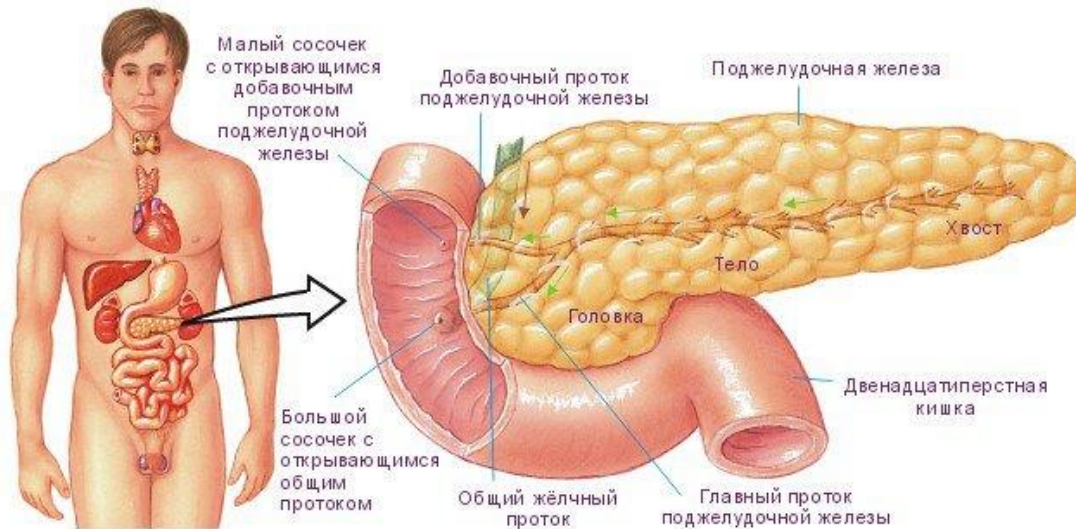
**Кишечник человека/ Human intestines**

Толстая кишка/ Large intestine

Аппендикс/Appendix

Тонкая кишка/Small intestine

Прямая кишка/Rectum



Малый сосочек с открывающимся добавочным протоком поджелудочной железы/Minor papilla with occluded accessory pancreatic duct

Большой сосочек с открывающимся общим протоком/Major papilla with occluded common duct

Добавочный проток поджелудочной железы/Accessory duct of the pancreas

Общий желчный проток/Common bile duct

Поджелудочная железа/Pancreas

Головка/Head

Тело/Body

Хвост/Tail

Двенадцатиперстная кишка/Duodenum

Главный проток поджелудочной железы/Main pancreatic duct

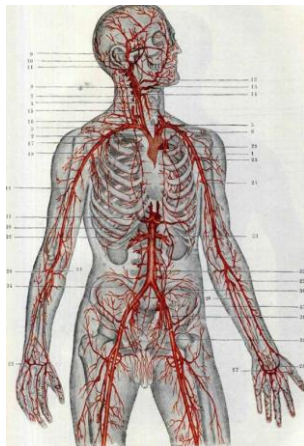
**The PANCREAS** is a **REGULATOR** of the dimensions, weight and contents of containers produced from the warehouse. Quite often, the **PANCREAS** can be imagined as the head of the warehouse. The **PANCREAS** is under special control and cannot be subjected to surgery. Simply put, in principle, a person does not live without a **PANCREAS**. Everything depends on the work of the **PANCREAS** — all exchange processes, feedback from the brain, production of address tags for containers (insulin), control of docking nodes, etc. Each container is designed for a very specific cell, and no other cell in normal operation can capture someone else's container and, moreover, change its labeling.

**Especially about insulin.** Of the many structures that form glucose, medicine has identified only one — **INSULIN**. Insulin is a catalyst, but it works only in a living environment, and its structure is formed by the Brain. If we isolate insulin and try to examine it in the laboratory, we will see **dead** matter with remnants of potentials and magnetic impulses that survive in the absence of communication with the Brain. This is similar to how they try to examine blood taken from a vein under a microscope — it has passed through sepsis and is no longer the same living blood that is in the veins and arteries. **Insulin** is not just a catalyst. According to the commands of the Brain, the pancreas produces exactly the insulin that is



needed at the moment. Therefore, insulin must not only **CORRESPOND** exactly to the **GENOTYPE**, but also the Brain must be able to control this catalyst, otherwise the delivery addresses of containers will be uncertain. Artificial insulin is an artificial catalyst, i.e., it is a structure that has **NO** frequency connection with the Brain. **Each new portion of artificial insulin shortens the life of cells.** The Brain cannot interfere in this process, since the lack of control does not allow anything to be done.

If insulin production **decreases to 80%** of the norm, then this is **a prediabetic condition** (some containers do not have an address and clog the paths). With a decrease in insulin production **to 40%** of the norm, a team of "Tajiks" is invited, who stick any address tags that come to hand on containers (we are talking about the introduction of artificial insulin). With a decrease in insulin production **to 33%** of the norm, insulin production stops altogether, "Tajiks" are dispersed, and **a Person lives no more than three days.**



**BLOOD VESSELS** are cargo delivery **ROUTES**, i.e., "rails". It is clear that the movement of the "train" depends both on the curvature of the rails and on the terrain — when moving uphill, you need to have several locomotives, and one is enough downhill. Imagine a tube with a liquid around which a wire is wound. If a current is passed through the wire, then the liquid (along with all its contents) will begin to move — this is how the entire circulatory system is built. By the way, it is now clear why an arm thrown unsuccessfully behind the head often "goes numb" in a dream or an unsuccessfully bent leg "sits out"?

**The LYMPH SYSTEM** is an **OVERPASS** with traffic lights and control points.



**Fig. 1**  
 right lymphatic duct  
 thoracic lymphatic duct  
 peckheta cistern  
 lymph nodes  
 lymph vessels



**The HEART** — since ancient times, when medicine discovered it — is considered an autonomous organ that works without the accompaniment of the **BRAIN**, which simply drives blood through the human body. In fact, contrary to and in spite of the generally accepted point of view, the **HEART** does not drive **ANYTHING** in the **HUMAN** body — the power that the heart develops is sufficient only for **ITS OWN** work. And then what drives the blood? You have just read about

this above — where it was about blood vessels. The **HEART** is a **SWITCHMAN** at a traffic light. The beat of the heart is set by the Brain, which, in turn, receives **ITS BEAT** from the lattice of the atmosphere. The tact enters the lattice of the atmosphere from the **COLLIDERS** of the Earth (see the above) and is consistent with the structure of metabolic processes in the **BODY**. The **RIGHT ATRIUM** of the heart is the assembly chamber in the container. This is a kind of magnetron,

where with a clock cycle of about 1c, food is packed into a container. After packing, the container enters the **LEFT ATRIUM**, from where it is then sent to the address "pasted" on it.

All these systems work under the control of the **BRAIN** and **only the Brain**, which has all the necessary frequency range and control functions.

So, there is a supply structure with its own power plant (providing power to all electric trains carrying containers), a control room (with a timetable, delivery schedule, container loading, etc.), an extensive track system, a garbage warehouse in the form of rusty axles, wheels from old steam locomotives, etc.

The timetable is drawn up in advance. If the composition is formed once a day, then you can sleep. If trains need to be formed every hour, then it is necessary not only to form a train, but also to coordinate all trains, adjust the balancing, lubricate the axles, check for cargo, pick up an electric locomotive and clear the tracks in time.

If such a schedule is designed for 100 years, then there is an opportunity to make a fool of yourself. For example, instead of boxes with cans of caviar, they can slip you a box with green peas (in the best case) or put a rusty wheel — the total weight will be saved, but the recipient may be outraged.

The schedule must not be broken. Therefore, when a shortage is detected (at the entrance control), the weight of the container is "achieved" from the warehouse. The container may have the wrong viscosity or the wrong size, then there is a delay in the stroke (in medicine, this phenomenon is called **ARRHYTHMIA**), and the **PANCREAS** urgently makes a replacement from the warehouse. In case of violation of the general schedule, in case of a major shortage, the container has to be replaced entirely — and take containers released half a century ago from the warehouse.

Untimely delivery of electric locomotives, improperly stowed cargo in a container, leakage from the container and a lot of other troubles can also lead to a violation of the schedule (arrhythmia).

It should be especially noted that in such a supply structure, all services, unlike medical representations, work in the same rhythm.

What immediate conclusions follow from the above?

**IF THERE IS AN ARRHYTHMIA — do not BLAME the HEART and start DIGGING into IT!**

You cannot eat only black caviar — it is not suitable for replacement. Similarly, you cannot eat one herb.

Before performing an **OPERATION** (or giving "recommendations" on the use of a particular drug) on a **PERSON**, it is necessary to have a **DETAILED** analysis of the **FREQUENCY of the BRAIN**.

Who and what can do it (implement or realize) is written in the **TITLE** of this article.



**August 2014.**

**"RNT0" To be continued...**