

2.13. Levashov's Genius and his LEGACY in the Transition Period. Part 2.

Author: Author: [Bittner E.A.](#)

Part 2. PROACTIVE STRATEGIES - PRESERVING THE BRAIN AND HUMAN LIFE.

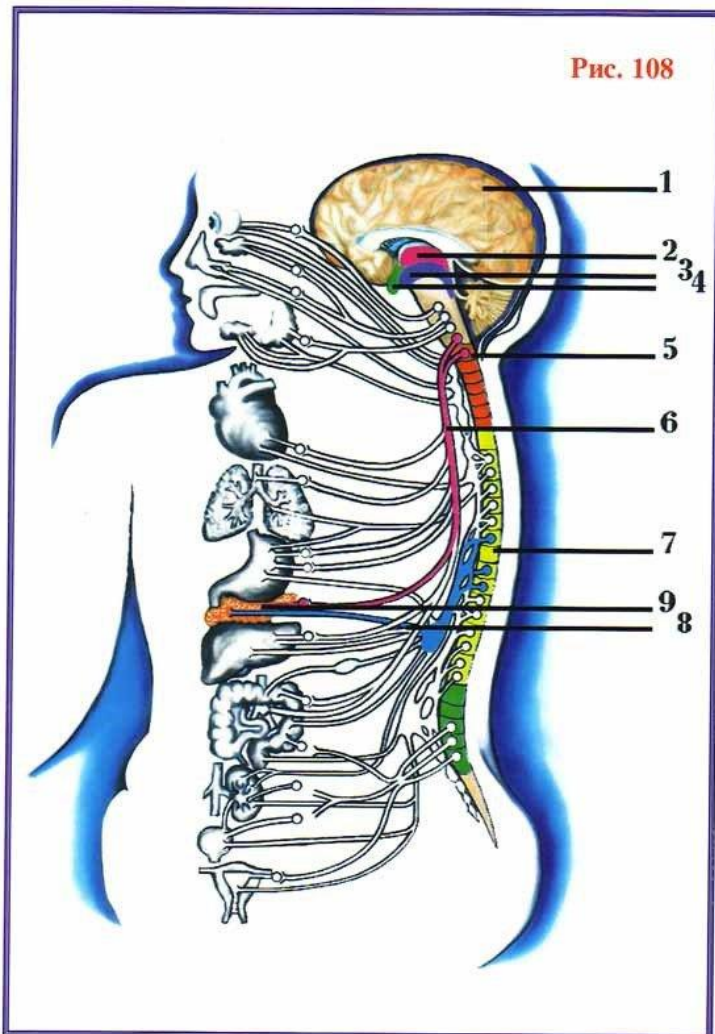


..Let's go further through the text of the Interactive Scientific Conference of the Research Institute TSUS and its main topic: "**How to give Russia the appearance of the future in the new World order**" http://www.salvatorem.ru/?page_id=2729, since the "**SvetL**" Programs created by the **Genius of Nikolai LEVASHOV perform other functions** besides harmonizing the social space and blocking aggression during the Transition Period:

"First of all, it is necessary to realize the existence and features of the Transition period that has begun, its program duration, the unconditionality of the execution of the **processes of ongoing changes in the entire surrounding reality**, primarily as a **change** in the entire Structure of **the existence of energies, their management** and all irreversible and mandatory changes **in the existence of people**, as a consequence."

Awareness of any processes requires people to carefully observe their occurrence. As a rule, the vast majority of these changes go unnoticed. People can hardly keep several chronos of events happening simultaneously in their minds at once, and even more so, put them into a single holistic picture of the changes taking place. Attention is dissipated by the fact that **the human body begins to malfunction** - the number of patients with various chronic and

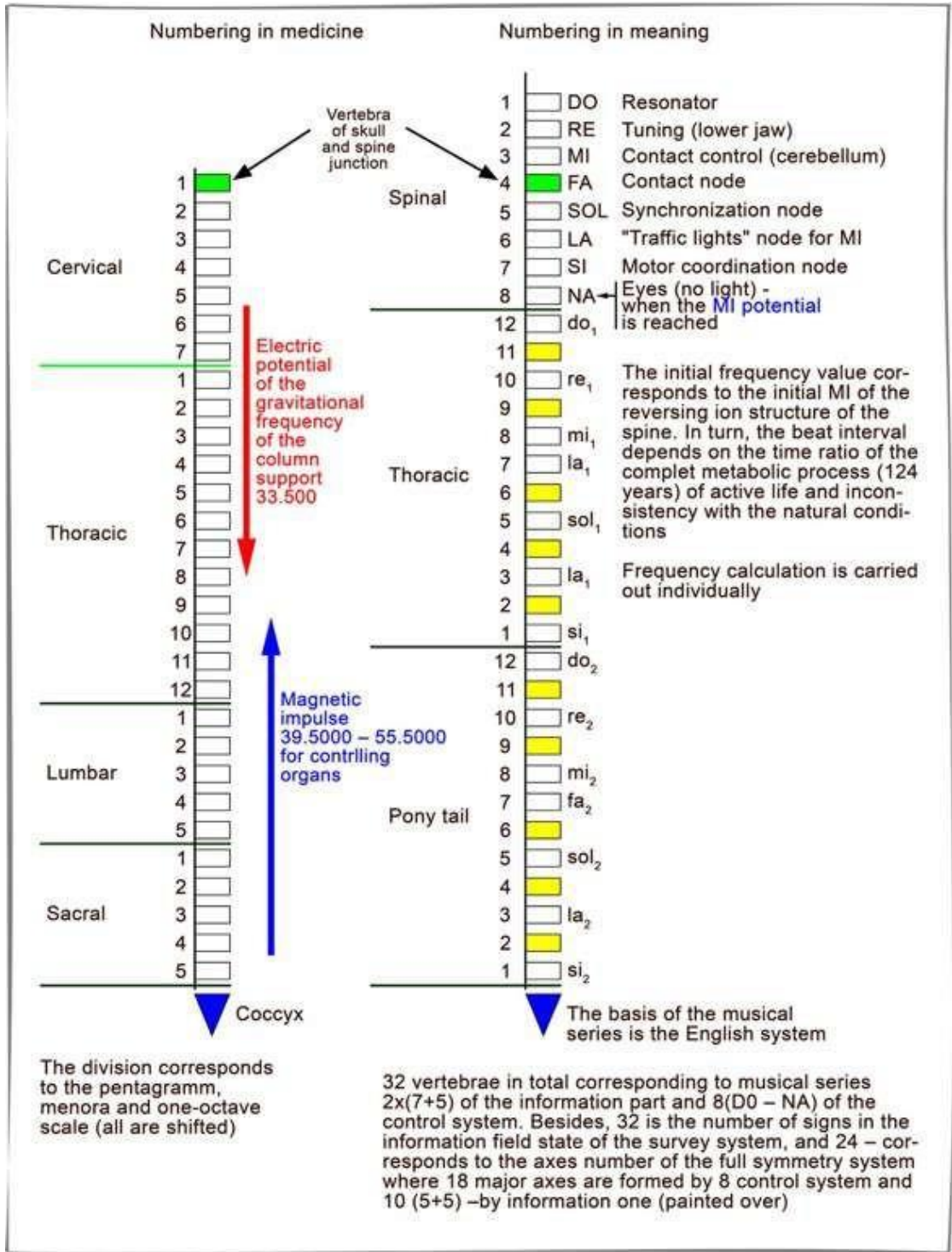
oncological diseases has increased. Chronic fatigue syndrome, diseases of the musculoskeletal system and sudden epidemics require the transfer of human attention to the very morbidity of the processes. No one wonders why there is such a rapid increase in exacerbations, deaths and accidents right now. Moreover, few people know that **all these exacerbations** are caused precisely by a **change** in the entire Structure of the existence of energies. At the same time, medications that provide previously defined relief stop "working"!



As has been repeatedly pointed out in the series of articles "**Knowledge from Na_chala**", all processes in a living organism are **controlled by the Brain (Essence)**, setting a certain frequency rhythm for the harmonious functioning of all organs and systems in a single beat. **The Human Brain** at the physical level has areas of the cortex that **coordinate and control the functions and work** of each organ or system **in the interests of the whole organism as a whole**.

At the same time, each zone of the cortex generates its own nerve signals for this control. Equally important in the delivery of these signals is the role of the SPINE as a resonator, and especially its sacral bone - the coccyx. **Relative to the coccyx**, each vertebra is adjusted. Therefore, **damage to the coccyx is**

extremely dangerous.





According to the research of another brilliant Russian scientist **A.M. Khatybov**, it is mathematically precisely established that all life on earth is determined by frequency **dependencies** formed by **the difference of two numbers** of the Solar System. The basis of any living structure is hydrogen, and the 4th structure of hydrogen transformation is Nitrogen. The formation of ions is subject to **the same number difference**. **Each living cell represents specific gravitational frequencies and electrical potentials**. The connection between the blocks is magnetic pulses having their own potential and frequency. The frequency range of magnetic pulses for a living cell (communication with the

neutron space) is **4 - 84 octaves**, the next buffer has a range of 54 - 96 octaves.

The most stable system is the neutron one, and any disturbance in any of the **upper structures** entails the transmutation of nitrogen block ions in the neutron structure. This violates the albedo, when a certain balance is reached, the magnetic pulse of the connection with the upper structure disappears. The structural connections of the Brain with the body systems begin to break down, which manifests itself at the level of the physical body.

At the same time, **electric potentials and magnetic pulses are redistributed between the remaining structures**. The main principle for the normal state of the nitrogen block is that the albedo of the entire block is zero. What does this mean? The integral value of all acquired potentials, taking into account magnetic pulses, should be equal to the integral value of all losses associated with the redistribution of potentials after synthesis.

During the Transitional Period of changing frequencies of the CPS, all these values are NOT balanced. Living structures begin to "float" as the Brain loses potentials. **It's kind of fading away. Hence the complete loss of orientation and inappropriate behavior**. Only the motor functions of the body remain. Mostly grasping.



THESE PEOPLE HAVE MADE YOU A BEGGAR
in one of the richest countries in the world

1. The fact is that most of the actions performed by a person are performed repeatedly, sometimes millions of times, which leads to the development of permanent conditional reactions. As a result, all the processes of emotional adjustment to a specific action occur **at the subconscious level**. And at the same time, **human consciousness** practically **does not participate** in this process. The conscious participation of a person occurs only at the stage of the development of a conditioned reflex, which mostly occurs in childhood.
2. Human actions occur **reflexively, automatically**. The so-called **unconditioned reflexes** that a person receives through genes as an “inheritance” from his ancestors come into force. Because of this, again, emotional attunement to action occurs at the subconscious level, and a person does not attach importance to the processes taking place for one simple reason - **he does not notice it, his consciousness is busy with something else at this time**.
3. A Person **must understand** what is happening to him, which, if not impossible, is at least **very difficult** to do **without the necessary knowledge**.

The "SvetL" Programs tuned to a specific individual are **able to maintain the range of necessary frequencies**, and in the case of the individual's own efforts and his attempts to LEARN, the frequencies are gradually rebuilt to higher octaves, preserving awareness of actions and contributing to the development of the mind. This not only protects the integrity of the body, restoring its healthy state, but also **transfers the cell to a higher octave frequency level**. Additional withdrawal of waste products of the cell and the whole organism **increases its life span!**

But that's not all!

In the second volume of the book "Essence and Mind", Nikolai Levashov focused our attention on the change in **Human Genetics** not only towards destruction due to improper actions, but also showed the way to increase the "evolutionary meat" when saturating the bodies of the Essence with primary matter of the required quality:

« ...when the second, third and fourth material bodies of human cells are saturated with primary matter, the second, third and fourth material bodies of the human essence are saturated. During this saturation, the released primary matter **G** is distributed among the three bodies of the human essence - the second, third and fourth, and, as a result, each of the bodies of the essence receives only a part of the "pie". While the released primary matter **F** saturates the third and fourth bodies of the essence and each of these bodies gets a "bigger piece of pie". And the released matter **E** **entirely** "goes" the fourth material body of the essence. Thus, the ascending stream of primary matter **G saturates three bodies** of human essence, the ascending stream of primary matter **F - two bodies of essence**, and the ascending stream of primary matter **E - only one body**. Such a distribution of primary matter between the bodies of the human essence creates the necessary conditions for **optimal functioning of the human brain**, allows a person **to think, to be aware of himself and his actions** in relation to the surrounding world. The functioning of memory and consciousness is impossible without saturation with primary matters **G, F and E** of the second, third and fourth material bodies of the essence."



The DAY of SVAROG has come - the transition of the Earth's Management under the control of the native System! The predominance of primary matter **E** in the structures of the Brain (the fourth material body of the Essence) promotes the preservation of thinking ability and reasonableness in behavior. The lack of primary matter **G** leads to **instability of a physically dense body and an automotor state**. The "SvetL" complex **preserves the balance of PM**, so necessary for Human life, restoring large or insignificant losses of "evolutionary meat". And if a Person makes efforts to further develop the

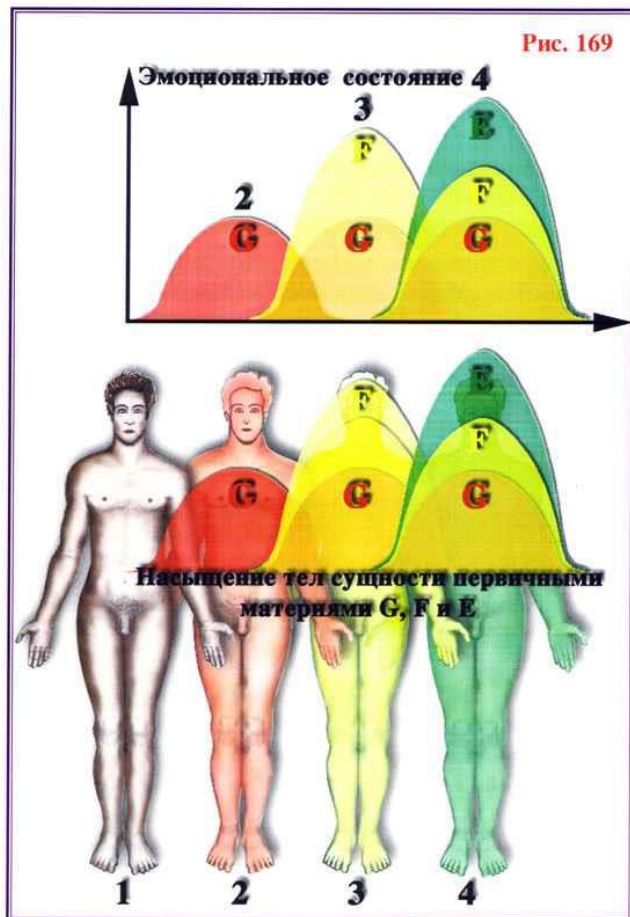
structures of his Brain through CREATIVITY and an ACTIVE POSITION during the Transition Period, then the following happens:

"... any human action, as a result of which the essence's bodies acquire new evolutionary qualities, is POSITIVE KARMA. At the same time, the molecular weight of DNA or RNA molecules increases, as a result of which they begin to influence the surrounding microspace to a greater extent, and causes a greater degree of opening of qualitative barriers between levels, which leads to the "heaviness" of the essence bodies. This is a positive evolutionary shift. Usually, a positive evolutionary shift is insignificant and does not cause significant changes in qualities. Therefore, conditions arise when the "evolutionary meat" increases, which corresponds to evolutionary development."

The following conditions are necessary for this:

- 1. The presence of ascending streams of primary matter permeating the bodies of the essence.**
- 2. The possibility of increasing the molecular weight of DNA and RNA molecules, and as a consequence, an increase in the "weight" of already developed essence bodies.**

We know that the presence of updrafts is ensured by the intake of nutrients into the cells of the body. **The standing wave of dimensionality creates supercritical conditions for most of the molecules trapped in the inner volume of the spirals, which makes them unstable, and they disintegrate into the matter that forms them, which form the ascending flows of primary matter.** And how do we increase the intensity of these flows so that the "weight" of the accumulated Essence bodies increases?



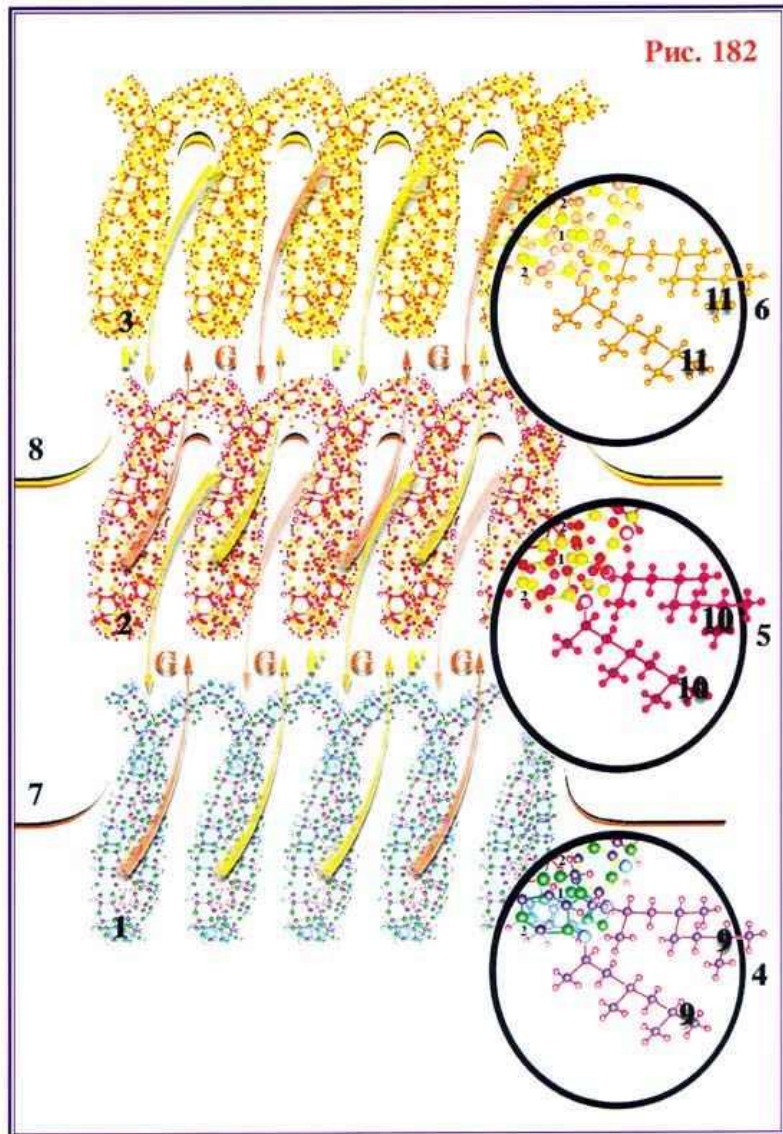
«...To accomplish some positive action, a person must enter into an **emotional resonance** with this action. Positive emotions corresponding to the action arise as a result of additional saturation of the third and fourth bodies of the essence with primary matter **G** and **F**, which occurs as a consequence of an **increase in the intensity of metabolism in the cells of the body**. The intensity of metabolism is regulated by the **state of consciousness of a person** corresponding to this action. A person's **conscious effort**, awareness and willingness to commit an act include subconscious mechanisms for controlling the level of hormones in the blood.

.. after **optimal saturation of the fourth body of the essence at this evolutionary level of development, the continued additional saturation of this body with primary matter leads to excessive**

saturation. And when the **excess saturation** of the fourth body of the essence reaches a **critical level, there will be a reverse flow of primary matter from the fourth body of the essence to the third**, then to the second, and then to the first material body of the Essence - the physical cell. The projection of the fourth body of the cell carries with it an influence on the microspace of a physically dense cell, **increasing the level of its own dimensionality**. The additional dimensional differences brought by the projection of the fourth cell body are superimposed on the dimensional differences of the internal volume of the helices of the **DNA and RNA** molecules of the cell and increase the already existing dimensional difference. This leads to an **increase in the rate of decay of "nutrient" molecules on the matter forming them, which leads to an increase in the power of the ascending flow of primary matter**. An additional perturbation of dimensionality in this case **does not cause** the disintegration of a physical cell, as in the case of cell division.

...The "relief" of the cell dimension changes. As a result, conditions arise under which new electron-chemical bonds between atoms of DNA or RNA molecules of the cell and between "free" atoms, molecules and ions are possible. There is an increase in "evolutionary meat" on the "skeleton" of DNA or RNA molecules due to "voluntarily" attached intracellular "inhabitants".

Why did **Nikolai Levashov** describe in such detail the processes of destruction and build-up of "evolutionary meat" on the example of a living cell? Isn't it so that we can understand the essence of the technology of creating UPDRAFTS to preserve the Human Brain and its Life during the Transition Period? Was it not a **PROACTIVE STRATEGY** on his part on the eve of the events that **B. V. Makov** wrote about:



"No less significant is the awareness of the fact that the changes taking place in the whole essence of future existence (or non-existence) on planet Earth are **independent of the will and desire of people...**

From October 1985 to the present, a number of grandiose phenomena, actions and events have occurred on our Planet in the spheres of energy existence, **that are still beyond the knowledge of the majority of the current generation of people**, but could be partially observed by them as speculative effects from their manifestation, as cataclysms of various nature. The result of the ongoing transformations led to the main cardinal change - the elimination of the software processes of the old Control System, on the one hand, **and the beginning of the**

reconstruction of system-control functions for objects and Complexes of the true Earth Control System, on the other hand.

Everything that happened earlier and **what is happening in the future cannot be explained by current science**, since the inertly prevailing methodological platform of the materialistic worldview does not allow this, and the subsequent stage in gaining knowledge of the truth on the basis of materialistic idealism is just beginning. ***People are not able to influence the changes in the course of everything that is happening***, and the consequences are extraordinary - in a very short time, **program changes are carried out by the management of the environment, including the habitat on Earth**, with all the consequences coming from this.

...The specifics of the Transition period were outlined in previously provided public materials, but some of them are the subject of closed judgments. On their common basis, **proactive strategies should be formed, such actions should be determined and prepared in advance, which would inevitably and without deviations lead only to the required events...**"



The creation of "SvetL" Programs is a formed proactive strategy, a GIFT to Humanity for the preservation of the Brain and Life itself on the recreating Planet Earth.

RNTO, Elena Bittner

To be continued...