

1.21. The "SvetL" complex, the Human spine and other "Wonders in nature"

Author: F.D. Shkrudnev



From the point of view of modern medicine, **the spine is needed for a person to give posture when visiting nightclubs**, a pillar (such as a fence) to hold the ligaments of nerves branching into organs, **to store excess memory (which does not fit in the head)**, as well as to separate the upper and middle (pelvic area) parts of the trunk so that they do not swap places. The role of the pentagram in the construction of the environment is known, as well as the number 7, so the basic breakdown of the spine from the skull, $7 + 12 + 5 + 5$.



The breakdown is **completed at the coccyx**, which can, like in all normal mammals, **be continued with a beautiful tail**. In order not to confuse mammals with humans, it is customary in medicine to call the spine below the ribs a "ponytail". In this case, the rights are equalized, and **there is no point in separately looking for a continuation of the coccyx**.



ШЕЙНЫЙ ОТДЕЛ/CERVICAL SPINE,, ГРУДНОЙ ОТДЕЛ/THORACIC SECTION, ПОЯСНИЧНЫЙ ОТДЕЛ/LUMBAR SPINE, КРЕСТЕЦ/sacrum, КОПЧИК/COCCYX

It is known that hernias can form between the vertebrae and interfere with life. In addition, it is known that nerve nodes coming from a certain vertebra are connected to a certain organ, although they are not directly related to the spine.

NOT a SCIENTIFIC (non-medical) point of view.

During development in the womb the **coccyx appears first**, then the vertebrae "crawl out" one by one, hence, it is more correct to start counting **vertebrae from the coccyx** (base of the pyramid), and **finish with the skull** - the top of the pyramid, and **not vice versa, as in medicine**.

Let's consider without comparison with medicine (not to traumatize doctors) some features of construction of the spine.

1. The structure of the spine construction exactly corresponds to the information musical series and the musical series of the control system (12 + 12 + 8) (see previous articles).

There are 32 vertebrae in total, which corresponds to the complete sign system of the information and control fields of the **Management SYSTEM**. The 15 – degree rotation of the magnetic pulse vector corresponds exactly to the 15 - minute interval of its change.

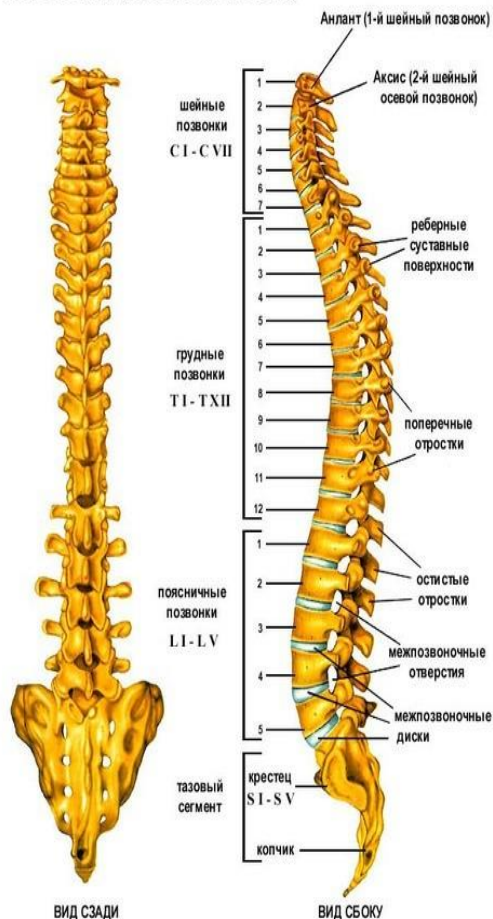


НОРМЛЬНЫЙ ДИСК/NORMAL DISC, дегенерация диска (изменения с ухудшениями)/Disc degeneration (changes with deterioration), протрузия диска/disc protrusion, грыжа диска/disc herniation, истончение диска/disc thinning, дегенеративный диск и формирование остеофитов/degenerated disc and osteophyte formation

2. Each vertebra is unique, no two vertebrae are exactly alike and **each genotype has a different resonance of the vertebra contour**.

Note that the **vertebra** is a **lymphatic ionic deposit**, the contour of which formed the vertebra itself, connected with the adjacent vertebra **and formed all the bonds**. The vertebra itself is **not only a "power" circuit**, but also a high-frequency resonator, and **each vertebra has its own tone**. There is not, and cannot be, a **rigid attachment of the resonant circuit to the organ**. Over time, the structure of the vertebra changes, the clock frequency of the magnetic pulse "floats", and the vertebrae can switch places in connection with the organs. All these positions of possible changes are **"laid down" in the "SvetL" Program**, which "forces" the generator of the "SvetL" Complex **to react to these changes correctly**.

ПОЗВОНОЧНИК (ПОЗВОНОЧНЫЙ СТОЛБ)



Left Side:

ПОЗВОНОЧНИК (ПОЗВОНОЧНЫЙ СТОЛБ)/SPINE (VERTEBRAL COLUMN)

ВИД СЗАДИ/REAR VIEW

шейные позвонки C I - C VII/cervical vertebrae C I to C VII

грудные позвонки T I - T XII/thoracic vertebrae T I - T XII

поясничные позвонки L I - L V/lumbar vertebrae L I to L V

тазовый сегмент/pelvic segment

Right Side:

ВИД СБОКУ/SIDE VIEW

Анлант (1-й шейный позв. онок)/Ailanthus (1st cervical positional vertebra)

Аксис (2-й шейный осевой позвонок)/Axis (2nd cervical axial vertebra)

реберные суставные поверхности/Costal articular surfaces

попечечные отростки/transverse processes

остистые отростки/spinous processes

межпозвоночные отверстия/Intervertebral openings

межпозвоночные диски/Intervertebral discs

крестец S I - S V/sacrum S I - S V

копчик/соссух

3. The role of each vertebra is individual. The figure conditionally shows the tones of the vertebrae related to the Control System, the information field and the capabilities of the "SvetL" Complex in interaction with the information field.

Note that when you open your mouth when landing an airplane, it does not mean that you equalize the pressure, you **CHANGE** the **resonant circuit**. The same thing happens with the vertebrae - in case of a violation of the clock frequency (for example, during the transmutation of the vertebra), there is a change in the resonant circuit, i.e. the construction of an additional ionic structure; **the accepted term is called a hernia**. However, if you could then close your mouth, **you simply will not remove the hernia**, surgical intervention will be required.

4. The musical control series is built on the octave DO - NA, and the **NA tone is extremely dangerous**, with the appearance of this tone, recently (by individual genotypes) there is a sharp decrease in vision, changes in the lattice of vision, a shift in color perception, etc. When the electric potential of the **magnetic pulse reaches 21%**, the **resonator is unblocked** and its operation stops, which automatically leads **to death or disconnection of the Brain** from the ionic structure.

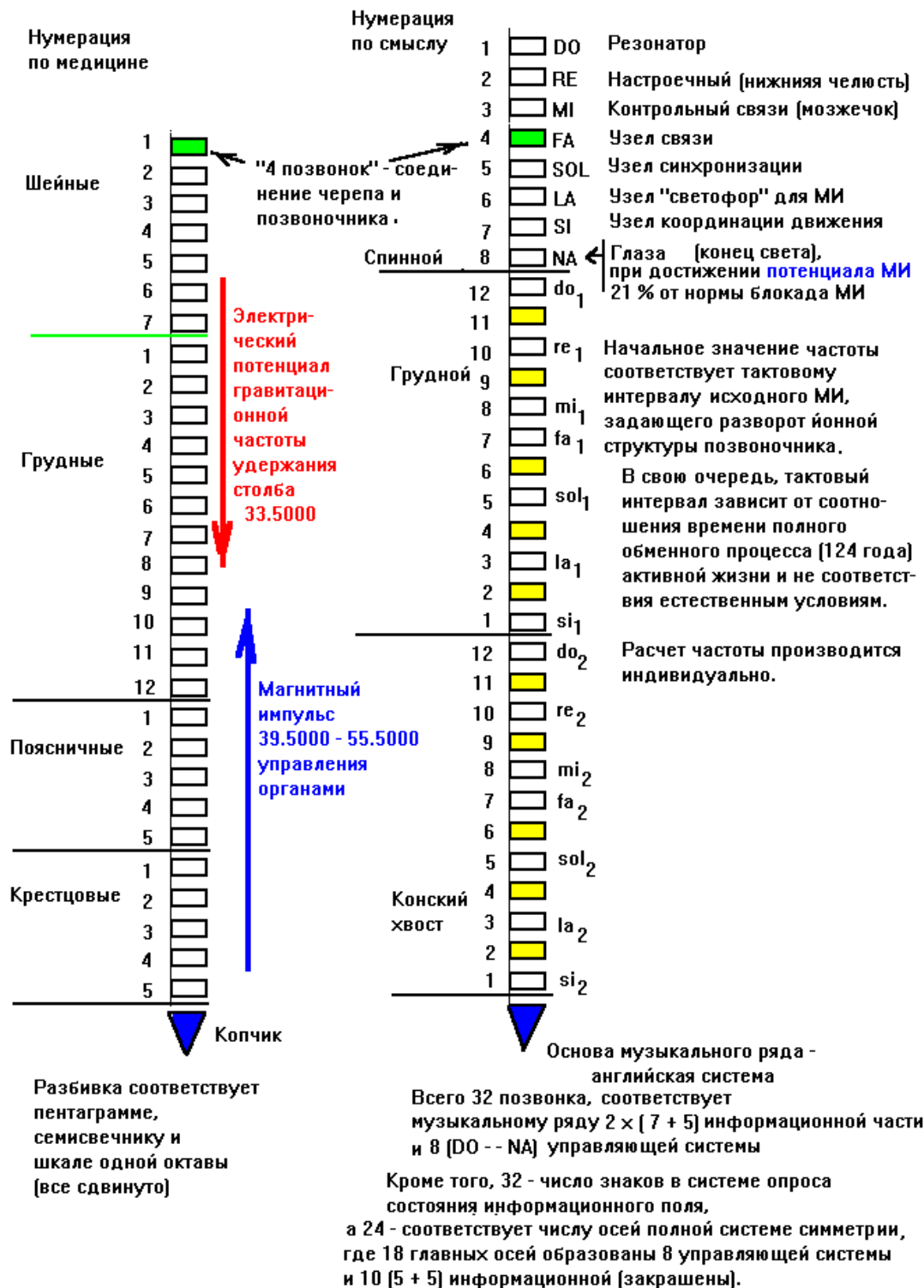
5. The information row is built according to the English system (12-note) and is quite well known in music circles. If, for example, while listening to a recording of any piece, you **suddenly feel the urge to go to the toilet** (you can repeat the recording later to make sure that this happens at the same place on the recording), it means that the resonance in frequency with the vertebra associated with the bladder is obtained. The brain receives the appropriate signal and gives the command to execute.

6. The type of Diogenes spiral is set by the coccyx (the Diogenes Barrel spiral will be discussed in detail in the following works). Each vertebra is set in **relation to the coccyx**. Therefore, **damage to the coccyx is extremely dangerous**.



7. The control system operates in a triad. The complete triad is equal to 18 axes of symmetry, they are all present in the spine (8 + 5 + 5 vertebrae), of which **DO and NA** are the initial or double symmetry, 10 vertebrae of the information structure are **normal or complex symmetry**, and 6 vertebrae of the control system are **fractional symmetry**.

Note that there are **NO DEVICES for measuring the frequencies of fractional and double symmetry systems** (this remark is for those who "continue to "measure", "examine", "feel" and "TRANSFER", and sometimes "create" the GENERATOR itself, having no idea about the PROGRAMS "embedded" in IT, nor about ITS "structure" and CREATION, as N. Levashov REPEATEDLY WARNED the curious PUBLIC). But as part of the use of the **"SvetL" Complex**, this process is carried out constantly in the "testing" mode both upcoming, planned changes in the body of the owner of the Complex, and "program" changes within the framework of today's Native Management System.



Left Side:

Нумерация по медицине/Medical numbering

Шейные/Cervical

Грудные/Chest

Поясничные/Lumbar

Крестцовые/Sacral

Разбивка соответствует пентаграмме, семисвечник и школе одной октавы [все сдвинуто]/The breakdown corresponds to the pentagram, the heptagram and the school of one octave [all shifted]

Center:

Нумерация по смыслу/Meaning of numbering

"4 позвонок" - соединение черепа и позвоночника./"4 vertebra" - the connection of the skull and spine.

Спинной/Dorsal

Грудной/Thoracic

Электрический потенциал гравитационной частоты держания 33.5000/Electric potential of the gravitational holding frequency of 33.5000

Магнитный импульс 39.5000 - 55.5000/Magnetic pulse 39.5000 - 55.5000

управления органами/magnetic bodies

Конский хвост/Cauda equina

Копчик/Coccyx

Right Side:

Резонатор/Resonator

Настроечный (нижняя челюсть)/Tuning [lower jaw]

Контрольный связи (мозжечок)/Control connection [cerebellum]

Узел связи/Communication node

Узел синхронизации/Synchronization node

Узел "светофор" для МИ/Node "traffic light" for MI

Узел координации движения/Movement coordination node

Глаза [конец света], при достижении **потенциала МИ** 21% от нормы блокада МИ/ Eyes [the end of the world], when the MI potential reaches 21% of the norm by blockades

Начальное значение частоты соответствует тактовому интервалу исходного МИ, задающего разворотионной структуры позвоночника.

В свою очередь, тактовый интервал зависит от соотношения времени полного обменного процесса (124 года) активной жизни не соответствия естественным условиям.

Расчет частоты производится индивидуально./ The initial value of the frequency corresponds to the clock interval of the initial MI, which sets the reversal of the vertebral column structure.

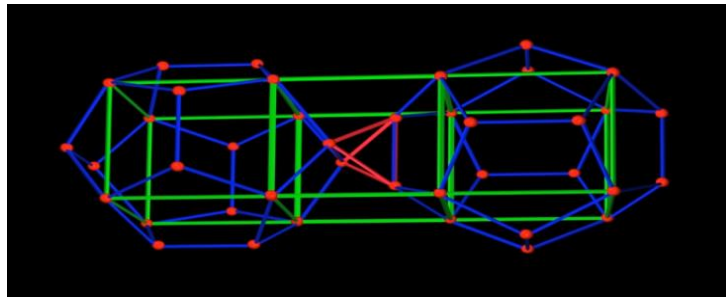
In turn, the clock interval depends on the ratio of the time of the complete exchange process (124 years) of active life that does not correspond to natural conditions.

The frequency is calculated individually.

Основа музыкального ряда - английская система. Всего 32 позвонка, соответствует музыкальному ряду $2 \times [7 + 5]$ информационной части и 8 [DO - - NA] управляющей системы/The basis of the musical series is the English system. A total of 32 vertebrae corresponds to the musical series of the $2 \times [7 + 5]$ information part and the 8 [DO - - NA] control system

Кроме того, 32 - число знаков в системе опроса состояния информационного поля, а 24 - соответствует числу осей полной системы симметрии, где 18 главных осей обозначены 8 управляющей системы и 10 [5 + 5] информационный [закрашены]./In addition, 32 is the number of signs in the system of the information field, and 24 corresponds to the number of axes of the full symmetry system, where 18 main axes are represented by the 8 control system and 10 [5 + 5] informational [shaded].

Fundamentals of piezoelectric elements with inertial mass.



Before giving the **basic concepts on the use of piezoelectric elements with non-inertial mass, let's recall Maxim's laws** (what is non-inertial mass - A. Khatybov "Fundamentals of the Biosphere") and consider the piezoelectric elements themselves (as described by modern science).

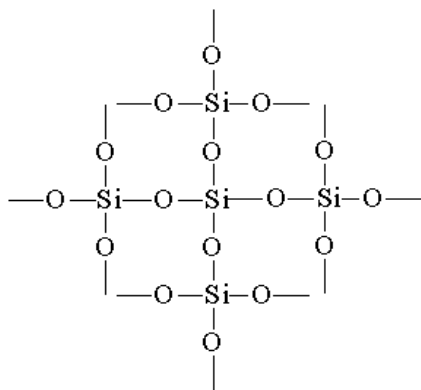
**** Reference.**

Oxygen balance of piezocrystals



Introduction.

The role of piezocrystals in information control systems is huge.



Piezocrystal - a kind of quartz and silicon (polycrystalline silicon). It is commonly believed that silicon (quartz) is crystalline silicon dioxide SiO_2 , one of the main minerals of the earth's crust. Natural silicon crystals have sizes from grains of sand to several tens of centimeters; there are crystals of 1 meter or more.

Polycrystalline silicon is "grown" in crystals of a given shape and then cut into plates, depending on the application. The crystal structure of quartz is formed from SiO₄ silicon-oxygen tetrahedra: the Si cation located in the center of them is surrounded by four O cations along the tetrahedron, and each O ion, by coupling tetrahedra, is bound to two silicon ions. SiO₄ tetrahedra along the main axis are arranged in a helical structure (right or left spiral). The absence of planes in the center of symmetry in silicon and quartz crystals causes the presence of piezoelectric and pyroelectric properties. In ordinary quartz glass, tetrahedra are interlocked randomly, **and the basis of polycrystalline silicon is made up of dodecahedral structures** for constructing the inner lattice of the silicon crystal itself.

This was taken into account when **creating the "dark matter" Generator** (the main "element" of the **"SvetL" Complex**). The knowledge of these processes made it possible to find the most optimal **"carrier" of the Generator** in terms of form and application and to develop **a fundamentally new "SvetL" Complex with expanded possibilities of its application**, relative to the potential owners of the Complex. This will be described in detail in the following articles. Recall that human muscle tissue contains (1-2)*10⁻²% silicon, bone tissue - 17*10⁻⁴%, blood - 3.9 mg/l. With food, up to 1g of silicon enters the human body daily.

Application.

To obtain oscillations with high frequency stability **a silicon wafer is used**, made according to a certain technology (autogenerator of electromagnetic oscillations with an oscillation system, which includes a "silicon resonator"), as one of the components of the Generator ("installed") "attached" to this wafer. Parameters of the oscillating system are chosen so that **most of the energy is concentrated in the silicon resonator** (strictly in the size of the plate, as the carrier of the Generator). In this case, the generated frequency is determined mainly by highly stable natural frequency of the silicon resonator, which is a volumetric mechanical vibrational system, made in the form of a plate, ring or bar, **cut in a certain way** from a polycrystalline silicon crystal. Such a piezoelectric resonator has a very **low energy loss during oscillation and high quality factor**.

Piezomagnetism.

The occurrence of a spontaneous magnetic moment in a substance when elastic vibrations are applied is called the piezomagnetic effect. Piezomagnetism can exist only in antiferromagnets and ferrimagnets and is fundamentally impossible in para and diamagnets. Thermodynamic consideration of the question of piezomagnetism is based on the isolation and study in the decomposition of the thermodynamic potential of the terms linear in the magnetic field Ni and

in one of the components of the elastic stress tensor σ_{jk} :

$$\Phi = \Phi_0 - \sum_{ijk} \Lambda_{ijk} H_i \sigma_{jk}$$

If all magnetic symmetry transformations of a given crystal leave at least one term in this expression invariant, the corresponding coefficient Λ_{ijk} (piezomagnetism modulus) will be nonzero, and a piezomagnetic moment will arise in the crystal

$$m_i = -\partial\Phi / \partial H_i = \Lambda_{ijk} \sigma_{jk}$$

The symmetry analysis made it possible to establish all classes of magnetic symmetry that allow piezomagnetism. There are 66 of them, and a kind of tensor was found for all of them Λ_{ijk} .

Due to the symmetry of the tensor σ_{jk} , piezomagnetic tensors can be represented as 3 * 6 matrices, and the number of such matrices is 16.

Ferromagnets include: Fe₂O₃, FeCo₂, MnF₂. Antiferromagnets: Co₂, FeF₂.

It can be seen from the formula that along with piezomagnetism, there should be a reverse effect - **linear magnetostriction**, in which the components of the strain tensor are linearly related to **the magnetic field**. The sign of linear magnetostriction, as in the case of piezomagnetism, depends on the sign of the vector L, which characterizes the formed domain state of the sample. During the research, it was found that in a magnetic field, the magnetostriction sign can **change abruptly**, which indicates a field-induced abrupt change in the domain structure of the antiferromagnet (rotation of the antiferromagnetism vector L by 180°). Linear magnetostriction was also observed during spin-reorientation transitions, for example, in orthoferrites (YFeO₃, DyFeO₃) and orthochromites (YCrO₃). In these compounds, in a certain range of temperature values, the direction of the antiferromagnetic vector L smoothly changes **from one crystallographic direction to another**.

At the same time, as the symmetric analysis shows, linear magnetostriction should be observed, leading to a monoclinic distortion of the orthorhombic or cubic lattice. The research effort was aimed at understanding (transforming) **the process of changing a cubic lattice into a dodecahedral one** through the search for a **certain carrier of the "Dark Matter" Generator** at its maximum efficiency.

Piezoelectrics.

Substances in which, under certain elastic deformations (stresses), electric polarization occurs even in the absence of an electric field (direct piezoelectric effect) **are piezoelectrics**. The consequence of the direct piezoelectric effect is the reverse piezoelectric effect - the appearance of mechanical deformations under the action of an electric field.

Piezoelectric properties have been found in more than 1,500 substances.

Piezoelectric effects are observed only in crystals that do not have a center of symmetry.



When other symmetry elements appear (as a result of mechanical deformation), the piezoelectric effect may either disappear or remain only in some directions.

Oxygen range of the piezoelectric element.

The oxygen series is known to be: 16, 18, 20, 22, 24, 26, 28.

However, this series must be divided into 2 groups:

Base row: 16, 18, 20, 22 (oxygen). Alternative series: 22, 24, 26, 28 (nitrogen).

According to the composition of atomic structures, the table follows:

No. Name of atom		Oxygen				Nitrogen			
		6	18	20	22	22	24	26	28
1	Proton		1	1	1	1	1	1	1
2	Antiproton							1	1
3	Gravitational	4	4	4	4	4	6	6	6
	Antigravitational						2	2	2

4									
5	Neutron	2	2	2	4		4	4	4
6	Antineutron	1	1	1	1	1	1	2	2
7	Neutrino	2	4	4	4	4	2	2	4
8	Antineutrino	2	2	4	4	4	4	4	4
9	Electron	4	4	4	4	4	2	2	2
0	Antielectronic						2	2	2

As can be seen from the table, the initial state of any inertial mass, which has a feature of the atom-antiatom charge transfer process and vice versa, is inherent only in nitrogen compounds, but oxygen and fluorine have this name. The discrepancy in meaning confuses and distorts the informational meaning. **The dodecahedral structure, which is the basis of any piezomagnet, can only be constructed with the participation of antiatoms.** A structure of the same type (consisting only of atoms or only of antiatoms in one type of field) cannot change its state due to the inability to change the state even by mechanical destruction or deformation (the sum of charges will always be constant). In another case, in the presence of different types of structures, the sum of charges or the total charge equivalent depends on the mutual orientation (direction vector) and the spatial arrangement of the bonds of atoms - antiatoms.

Deformation of such bonds leads to a change in the total charge. The whole lattice is built according to the dodecahedron structure, which means that the setting atom (forming the lattice) is the **proton atom**, whose positive charge is **the benchmark for transformations of bonding structures**.

With known limits of the change in the total charge on this structure, it is possible to build control elements used in the identification of the medium.

However, there are some inconveniences.

First, exceeding the norm of positive potentials due to the reasons mentioned earlier (see proton atom) leads to a shift in the normative data.

Second, this excess not only shifts the tolerance boundaries, but also blocks the action of the antiatomic charges. This can be shown by a simple example.

Let the values a , b , c be given: calculate the sum $L = a + (b - c)$, where a is the charge of the proton atom, b is the total charge of the atoms, and c is the total charge of the antiatoms.

1. $a = 10, b = 50, c = 70, L = -10$.

2. $a = 1000, b = 50, c = 70, L = 980$.

As can be seen from the second example, the charges of the atoms can no longer affect the total charge, hence **we get a purely inertial mass**, in which even the presence of atoms will not play any role, that is, **this new structure will be called "oxygen"**. Note that the atoms are sized. Due to the change in the charge density, the size of the structure increases, which leads not only to its destruction, but also to a change in the sign of the magnetic field.

It follows from Maxim's first law: "A mass has the property of a non-inertial mass if it has an electric potential of a magnetic momentum".

The basis for the construction of biostructures on Earth are electronic atoms having a 54 octave clock frequency. This property is known in Space, so **all biostructures created on other planets** must intersect by **transmutation with the 54th octave** (see A. Khatybov - "Fundamentals of the Biosphere", N. Levashov - "Heterogeneous universe").

In addition, all so-called UFOs are equipped with 54th octave annihilation units by superposition of electrical potential.

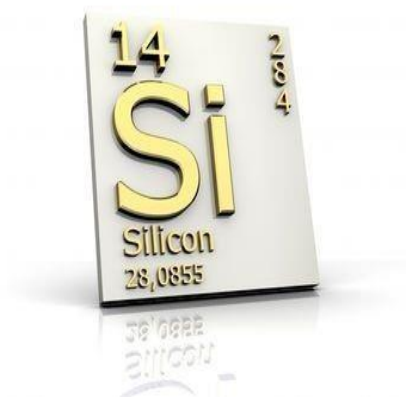
However, **for Earth there is not and cannot be an electron atom with a pure 54th octave** - there is no support of life support systems on the one hand, and on the other hand - **it would be perceived as a weapon**. That's why during transition processes (biostructures transfer to the Earth) **the telescopic transmutation principle is used** (described in N. Levashov's works **and recommended for your own careful search and familiarization**). Let us consider the 54th octave series of the magnetic pulse.

The basic series

1	54.12501250	17	54.37501250	33	54.62501250	49	54.82501250
2	54.12502250	18	54.37502250	34	54.62502250	50	54.82502250
3	54.12503750	19	54.37503750	35	54.62503750	51	54.82503750
4	54.12504500	20	54.37504500	36	54.62504500	52	54.82504500
5	54.12506250	21	54.37506250	37	54.62506250	53	54.82506250
	54.12507500		54.37507500		54.62507500		54.82507500

6		22		38		54	
7	54.12508750	23	54.37508750	39	54.62508750	55	54.82508750
8	54.12509750	24	54.37509750	40	54.62509750	56	54.82509750
9	54.22501250	25	54.45001250	41	54.75001250	57	54.97501250
10	54.22502250	26	54.45002250	42	54.75002250	58	54.97502250
11	54.22503750	27	54.45003750	43	54.75003750	59	54.97503750
12	54.22504500	28	54.45004500	44	54.75004500	60	54.97504500
13	54.22506250	29	54.45006250	45	54.75006250	61	54.97506250
14	54.22507500	30	54.45007500	46	54.75007500	62	54.97507500
15	54.22508750	31	54.45008750	47	54.75008750	63	54.97508750
16	54.22509750	32	54.45009750	48	54.75009750		

Note that this table is basic. If instead of zeros we place the numbers from 1 to 9, we get the whole set of transformations that no longer relate to telescopic transmutation, but are the result of irreversible transformations of the electron atom.



The reasons for such a transformation are different - they are described in A. Khatybov's "**Instructions for bathing**", but not all of this monograph can be public today, for obvious reasons. **There are many willing to "experiment"**. **Example**; the charge on octave 512 collided with the charge of octave 64. At the same time, the house collapsed. The opinion of the residents of the house was not taken into account.

And it was not taken into account that **albedo** is not a reflective ability, but the property of changing the electric potential under the influence of a magnetic pulse and a gravitational wave. The atom has one wonderful property - the energy constant of the atom is zero, however at the same time **the atom is a gravito-magneto-electric generator**. It is known that the natural frequency does not depend much on temperature. Coincidences in the clock frequency range **have a beneficial effect on the body as a whole**, so the plate itself, **made of silicon** (even without a generator "installed on it" **reacts to a Person in different ways**, depending on **his Genotype**). From the "research" conducted recently, it has become more than obvious that the **optimal carriers of the "Dark Matter" Generator** and, accordingly, the main platform for the "installation" The generators in the **"SvetL" Complex** today **are plates** (made in calculated sizes) made **of iron** (a certain grade of steel), **polysilicon** (the crystal is grown under certain conditions and then cut into plates of specified sizes), **silver and platinum**. **N. V. Levashov constantly focused on this**. Under his leadership, **back in 2011, "experiments" were conducted** to install Generators on these materials (confirming results were obtained for all the tests conducted from the participants of the "tests"), but **at that time**, the correct solution for the production of these carriers had not yet been found (due to a number of **non-public reasons**), and **a tablet computer was taken** as the basis of the Complex (as a platform for the "carrier" of the Generator), the working chip of which is made of **polysilicon**. The main resonant "platform" of the **Complex** built according to this design (in addition and "amplification" of generation) is the **touch screen of a tablet computer** in interaction with the main processor on a silicon platform. The technical solution to the problem of creating "plates" from the above materials made it possible to create both a Complex and other "devices" of **fundamentally better and an order of magnitude better** (both in terms of efficiency of use and **reliability** in operation). **But this in no way "belittles the effectiveness" of the existing "SvetL" Complex** (first generation).



Each of these **"carriers" can be used by the "SvetL" Complex** to solve certain problems, depending on the demand.

Separately we can add some explanations.

There is no point in entering into a polemic with "well-known" (in narrow circles) "members of the Spanish Club of Connoisseurs and readers of N. Levashov" in questions: **"what, when and who, turned it off and on"**

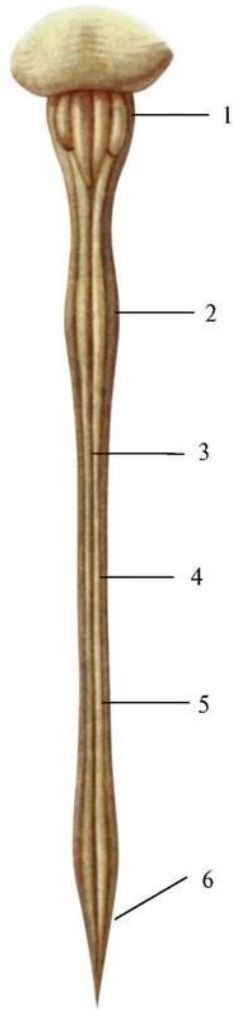
Which "on" and "off" codes were used, **where and who stores them (codes) securely**. Because it is already clear to many that the number of "on" and "off", as well as the "codes" and "programs" used for this, left in the "legacy", becomes **directly proportional to the LIES** generated by the remnants of the still partially preserved Brain of all participants of the "Club of Connoisseurs of one actor" and the amount of alcohol consumed (favorite drink - whiskey) in between meetings. And the "basic knowledge", which is constantly emphasized by the speakers, are the **mental and astral fields**, and nothing more than a desire to hide the **absence of a Brain** from others by proving a connection with a "Higher Intelligence" that lives in Space and **"visits" only "the chosen ones at their request"**.

As a rule, these subjects **cannot do without pathological lies**; they often use what is not written by them to **"create an external effect of their own significance"**. They are most revered by readers of N. Levashov (other works are not read), where **there is no need to have objective information among their own kind**, since they are easily recognizable by the main feature - **the immense power of the Russian language** does not combine with the scarcity of the vocabulary of "broadcasters – readers" (by analogy with the cannibal Ellochka from "12 chairs"). Therefore, for each new phenomenon - performance, only one thing is prepared in advance – **the "lights" are "turned off"** and the "heiress" is the guarantor of this (now with "codes" that she keeps securely). This **"heiress", as well as the "Spanish One-Actor Club" itself**, are **parasitic structures**. Not knowing the meaning and physics of that and not only what they are constantly "ranting about", fooling housewives and readers with "their knowledge", the basis of which is that **"the wind derives due to the trees swaying"** (O. Henry).

Interim conclusions on the above topics.

Modern physics today considers an atom only from a material structure: **a material body > liquid > gas > unorganized plasma, that is, a sequence of octaves - 64 > 32 > 22 > 16.**

With such "concepts", it is not worth trying to understand the principles and **capabilities of the "SvetL" Programs**, the "operation" of the Generator created by **N. Levashov**, and **come close to understanding** (for example) the book **"Heterogeneous Universe"** by N. Levashov, not to mention **A. Khatybov's monograph "Cold Nuclear Fusion" as the foundations of a NEW science.**



1. The construction of all atomic structures follows the scheme: **highly organized plasma > material body > liquid > gas**, that is, a sequence of octaves (128) > (126 - 74) > (72 - 66)) > (64) > (62 - 34) > (32 - 28) - (24 - 26) > (22 - 16).

2. **Octave 64 is a material structure.** This is a kind of pyramid (not in form, but in content). The top of the pyramid is octave 128 (atomic structures of all living things from the octaves 128 to 16). Everything else is built without a beat, except the octaves of **84 > 16**.

3. **There are no particles without charge** - there are simply **no instruments** to measure the charge or there is no medium **for its manifestation**.

4. **There are no devices in the 64-octave environment for measuring the characteristics of structures in 128-66 octaves** in which the Generator of the "SvetL" Complex operates and there cannot be.

5. **All atomic structures are interconnected** - each structure is located inside a certain lattice.

6. The brain (octave structures 66-72) is formed in honeycombs.

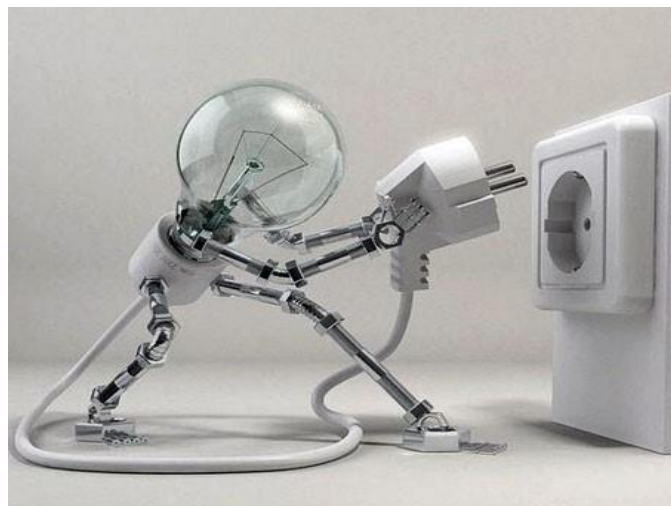
7. All calculations in atomic structures are made only using fractals of the golden section in the 12th number system.

8. An atomic structure cannot have a rigid frame. The size of the atomic structure can vary within (+/-) 24%.



9. The field must have a carrier - if electric, then an electron, if financial, then a measure, and so on. **There is no field without a carrier**, no matter what theory they hide behind, but both in atomic structures and in the environment around us **there is only one field – electric**. And it is precisely its properties in **various 96 octaves of state, 64 sliding angles in each octave, 18 variants of pulse transmission forms**, and so on, in combinations are perceived as other fields.

10. The "Dark Matter" generator (Psi Generator) must have a carrier (its own working platform). There is no generator without a carrier. The most optimal carrier (platform) for the Generator created by N. Levashov is iron, silicon (polysilicon), silver and platinum (plates made of these materials). The generator can also be placed on a "platform" made of another "material", but the efficiency of its operation will be commensurate with the capabilities of these materials.



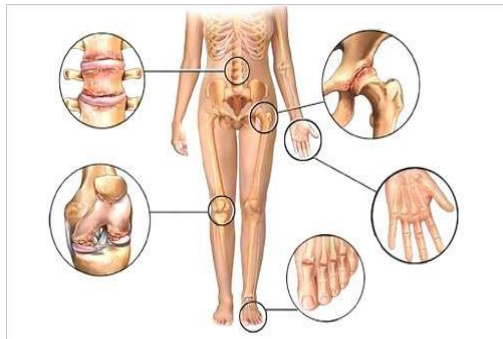
11. There is no concept of "turning on" the Generator or "turning off" the Generator, no matter what "Codes", "Programs" and "Modules" are covered by connoisseurs and "heirs". The Generator is either there or it is not.

12. All "influences" and transformations performed by the "SvetL" Complex (read as PsiGenerator) occur at the level of non-inertial mass. And this is a function of the Brain and Spinal Cord as a "receiving-information" antenna.

13. How, Who (and what) creates the Generator, as well as how it is "installed", is set out in the essay "The Mirror is not his Soul".

14. "Tuning", adjusting the power of the impact on the owner of the "SvetL" Complex and other opportunities (public) for both the Generator itself and the Complex are described in the "Instructions for the Complex", written under the guidance of N. Levashov. Detailed possibilities in the application of the "SvetL" Complex, as well as the "SvetL" Programs in the resulting events, have already been described and will be continued in the presentation in the Articles published and scheduled for publication under the Heading "Knowledge from Na_chala".

Fundamentals of the biology of piezoelectric elements and the "SvetL" Program.



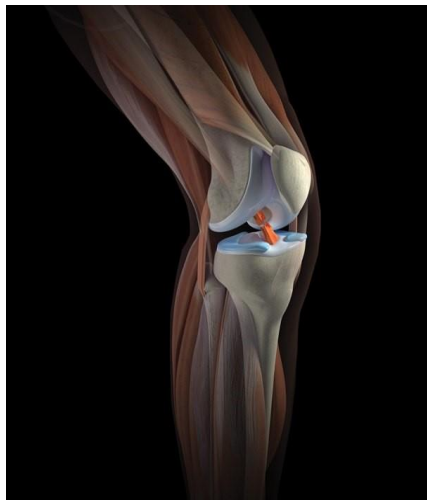
Introduction.

Piezoelectric elements have never been considered as an integral part of ionic biostructures.

In medicine, there is a concept of "salt deposit", this deposit appears, as a rule, in old age, but there are cases of the appearance of similar salt deposits in infants. Medicine considers these salt deposits to be extraneous inclusions and tries to remove them. However, each salt deposit is formed from an ionic structure that is a "continuation" of the lymph and together with the existing ionic structure (bone), this salt deposit forms a resonator that complements the partially lost functions of the bone.



The human bone skeleton **consists of 328,648 structures**, some of which are fully formed on an ionic basis. The rest are a kind of reserve and are converted to ionic structures when necessary. **There are no superfluous, non-functional parts in Man.**



Each element of the structure performs several functions and Man's perfection is not determined by the forms of the external ionic structure, but precisely by the reserve that can be used to maintain the necessary ionic form. Thus, **each bone in Man is a resonator of appropriate frequency**. The ionic structure of bone has been sufficiently studied. Besides those properties that are known to medicine, **bone is an information channel**, i.e. its structure is such that "tunnels" and transitions in the bone structure are not just resonators, but **"cables" through which information flows move**. The bottlenecks are the joints of the bones. **Cartilage**, on which bones "roll", is a **very complicated complex** that includes elements of inertial, or ionic mass, and by the nature, structure of construction they are close to the Brain. **What does this mean?** The complexity of the transition process between the bones and the small space causes the existence of two factors.



The **first** is the property of 100% transmission of the information flow and the **second** is not to violate the time factor (hence the complexity of spatial construction).

Consider the first factor. The structure of the resonator (bone) and cartilage are different. **Direct transmission of information flow without loss and distortion of information is impossible.**



So, there is a way to transform this information, and such that **its recovery** in another resonator is not a problem. All transformations occur at the level of non-inertial mass, and this is a function of the Brain, which is why it was presented that cartilage has a brain function. **The second factor is the main one.** The clock interval of the transmission of the information flow cannot be disrupted; otherwise irreversible processes may occur at the point of violation of the clock interval. The clock interval of the cartilage is always equal to the clock interval of the bone from which the information flow comes. Thus, **the cartilage has two clock intervals.**

Energetically, **the human body is balanced, and all electrical potentials, both gravitational frequencies and magnetic pulse frequencies, cannot change in the formed body.** Then why do nails grow?

We do not live on a meteorite, but in the Noosphere, and the information flows that permeate a person leave a trace in the form of specific additions to existing potentials, some of these "additions" are used to convert non-inertial mass into ionic structures.

The master generator is the spinal cord. Note that **nails grow only on the fingers and toes**; nothing grows from the coccyx (unlike mammals). **Consequently, the potential is reset from the Brain to the periphery, and the role of the Coccyx is special.** The non-inertial part of the coccyx is a **pyramid-type return generator** and it serves to loop the information flow in the main information center - the **spinal column**. Note once again that **nothing is superfluous in Man**. Therefore, the **ribs**, which **supposedly serve** to ensure the "safety of the lungs and heart", actually serve as a **potential limiter with a short circuit to the main energy node - the Solar Plexus**. (Remember what N. Levashov said – "... mentally create an energy ball in the solar plexus area and "drive it inside the body through your arms and legs..."") The absence of such a limiter would lead to an unlimited growth of external potentials in the body. Unlike the bones of the spine, where there is a strict dependence on the resonant frequencies of each vertebra, the remaining bones perform other functions, no less important than the functions of fixing external information.

1.2. The human muscular skeleton.



From the point of view of modern medicine, the human muscular skeleton is designed solely to transmit motor functions to the bones. By having blood vessels, the muscular skeleton is more convenient for taking blood for analysis than if these vessels passed through the bones. The conventional wisdom is that the more muscle, the better.

From an unscientific point of view, the muscular skeleton of Man is a **very complicated complex**. And it is not about the names of the muscles and their structure, but the properties of an individual muscle from the point of view of protecting the information flow. **The thicker the muscle, the less protective function** it performs, besides in the places of muscle thickening the information flows are of no value. Blood vessels, their composition, structure, filler (blood) composition are described in **other articles presented to you by "Na_Chala"**. Here we should note again that **blood is not a carrier of information, but its protection**.



What are the functions of protection?

First, to prevent the scattering of the information flow by fixing the transmission nodes. And here **the "SvetL" Complex will help**, if it happens.

Second, the design of the screen around the information flow due to the special arrangement of blood vessels, the lymph of which forms the muscle tissue between the vessels. The clock frequency of the screen is compatible with the clock frequency of the original electron atom the **54.62506250 octave**. Naturally, **the clock frequency in the "SvetL" Complex** is also **compatible**.

1.3. Changes in muscle structure.

Muscles are not a perpetual motion machine, and therefore are subject to change. There are ways to keep the muscles in working order. But the main problem for muscles is **muscle sepsis**. Muscle sepsis is formed **due to the superposition of clock and carrier frequencies of the screen and the external environment**. Note that as a result of sepsis, the ionic structure **loses its non-inertial mass** and turns into ordinary sand, which **later fills vital organs - kidneys, bile ducts, intestines, etc.** "Sand" is, of course, a conditional name.

But the structure obtained as a result of muscle sepsis has a **32.000000 octave of the clock gravitational frequency**, like sand.

It should be noted that with age, the muscles become flabby. This does not mean that the information flow is left unprotected. It is necessary to calculate the relative values of the screen - flow, which will help determine the sensitivity. **With age, sensitivity increases, so the reaction to external changes is adequate.**

1.4. Biopiezoelements.

Biopiezoelements are structures formed during cartilage sepsis. It is known that each bone (including the vertebra) is a resonator of a given frequency and a corresponding musical tone, informational or control. The clock frequencies of the fields are determined by the electron atom, and the carriers are determined by the characteristics inherent in a specific genotype.



When the muscle is septic and the protective screen is breached, cartilage sepsis automatically occurs. In addition, the unprotected information flow changes the structure of the resonator, shifting the carrier frequencies. This shift should be compensated by something. It is compensated by formation of cartilage sepsis and formation of biopiezoelement for synchronization of new frequency and subsequent transmission of information flow without distortions.



A **bio-piezoelectric** element is a structure containing a non-inertial mass as a **battery for the operation of the ionic structure** of the piezoelectric element itself. As the non-inertial mass is consumed, the biopiezoelectric element turns into a conventional piezoelectric element (in medicine it is called "**salt deposits**"). If the bio-piezoelectric element is in the general structure of the information flow, it does not interfere with the body, since the electrical potential transferred from the non-inertial mass exceeds the electrical potential obtained by mechanical compression of the bio-piezoelectric element. In addition, relative to a given sliding angle for the information flow, the translatable and "mechanical" potentials have the opposite value; their superposition also determines the sensitivity, or quality factor of the circuit.



On the other hand, a bio-piezoelectric element resembles a trigger, where the direction switching depends on the type of potential supplied, so the movement of the information flow occurs in both directions. An ideal bio-piezoelectric element can be considered an element that is compatible with the standard of an electronic atom in terms of the clock frequency of a magnetic pulse. As the non-inertial mass is consumed, the trigger turns into a diode, and the information **flow meets a "barricade"** on the way. The effect of the piezoelectric element is known - the generated electric potential (sufficiently dense with strong compression) neutralizes the electric potential of the magnetic pulse, causing an instant coma along the entire path of the magnetic pulse. **The brain reacts to this condition with a pain syndrome.** In medicine, there is a convincing explanation for salt deposits - **salt rubs against the nerves and scratches the bone, therefore - pain and dumbness.** A **bio-piezoelectric** element can be formed only on the path of the magnetic pulse. It is not difficult to guess why the users of the Complex, in the **shortest possible time of use**, stop these painful sensations, although it should be emphasized that if the **absence of the user's Brain** is already clearly observed (there are also such), then this process is significantly "delayed". **But, all the same, the task will be positively solved.**

