

1.20. "SvetL" wellness programs - harmony of the body and essence

Author: Boreyko V.M.



If you don't learn to control yourself, others will control you

WE GOVERN BY VIRTUE OF OUR UNDERSTANDING, BUT WE ARE ALSO GOVERNED BY VIRTUE OF OUR LACK OF UNDERSTANDING!

THEREFORE, A PERSON SHOULD NOT BLINDLY TRUST EVERYTHING THAT THEY TRY TO IMPOSE ON HIM, HE SHOULD LEARN TO ALWAYS SEE THE CONNECTION BETWEEN CAUSE AND EFFECT, ONLY THEN WILL HE BE ABLE TO REMOVE ALL OBSTACLES IN HIS PATH!

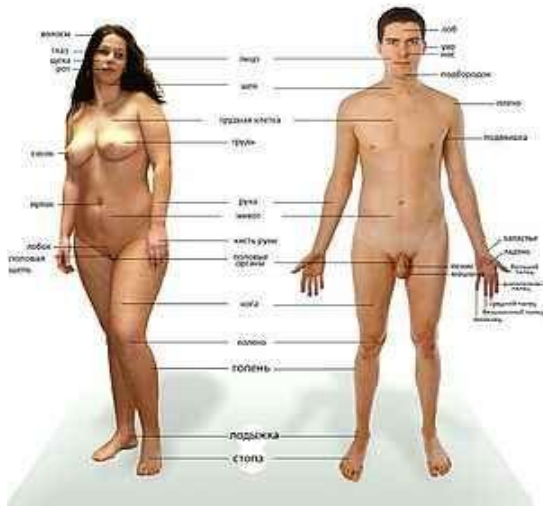
What does it say here?

A person should have no authority and especially no dogmas that try to impose on him. Over time, many dogmas are shattered by a deeper study and elucidation of the cause and effect relationship of the processes that occur in nature. I am not saying that one should not believe anyone. It is necessary to let all the information you receive pass through you and analyze it!

These wise sayings apply in one way or another to all areas of our lives. This is especially true in education, economics, sociology, IsTORIA, and medicine.

In this article, I propose to consider an issue concerning our health that affects each of us.

Unfortunately, I do not remember the name of one surgeon, who honestly articulated his knowledge in this area of his work when receiving the Nobel Prize. He said: **"The more I study the Human Body, the more I realize that I know nothing"**.



What modern medicine is and its methods of "curing" disease and imposing it on the afflicted has been beautifully laid out in the book by American pediatrician Robert S. Mendelsohn. "Confessions of a Heretic from Medicine". [1] I especially recommend reading it to practicing physicians, many of whom are conscientious about their profession and compassionate about their patients under their care. I purposely do not use the medical term PATIENT[2], because in Hebrew it sounds insulting to the sick themselves. You can find out the meaning of the word yourself on Wikipedia.

Now let's find out what knowledge modern medicine has and what methods and medicines it "treats" us with.

Once again, I want to remind the reader! You don't have to believe everything I'm trying to tell you. Check everything out for yourself and don't forget the opening part, which reads.

WE ARE RULED BY VIRTUE OF OUR UNDERSTANDING, BUT WE ARE ALSO RULED BY VIRTUE OF OUR LACK OF UNDERSTANDING!

I suggest that this motto guide you in your daily life, and you will avoid many problems.



And so we will continue.

We turn to the same WIKIPEDIA, and find out what the human body consists of.

I will give only the first paragraph as an example. If someone wants to read it in full, they can read it by following this link: [Wikipedia](#)

***The human body** — the physical structure of the [human being](#), the human organism. The human body is made up of [cells](#) of various types, characteristically organized into [tissues](#) that form organs, fill the space between them, or cover the outside. The adult human body is made up of about thirty [trillion](#) cells. The cells are surrounded by an [intercellular substance](#) which provides mechanical support and transports chemicals.*

The human body is divided into [head](#), [neck](#), [trunk](#), [upper](#) and [lower extremities](#).

*Very enlightening, isn't it? Forgive me for being a bit rude, but it sounds like the language of a chef that a human being is made up of bones, meat, skin, and liver. So what is the difference between a cook's knowledge and that of the "luminaries of science"??? The only thing is **they are empty terms**, because there is nothing about any cognition and understanding of the human body, based on the interpretation of modern "geniuses" from medicine, except verbiage!*

As proof of my words, remember how many specializations in the human body doctors have?

Does it remind you of anything? Then remember Arkady Raikin's pamphlet about a tailored suit in an atelier! Each "specialist" faithfully performed his part of the operation and the technology. And now imagine that these are doctors! They did everything correctly, according to the instructions!

And one more important aspect of the principle of treatment, or more correctly said - curing a person, according to the system of modern medicine, is the treatment of **the consequence of the disease, and not the cause!**

Here's an example:



Imagine having water over the edge in your bathtub and instead of shutting off the valve, you try to collect the spilled water! What do you think? Can you solve the problem? This is the principle by which we are "treated."

Nikolai Viktorovich LEVASHOV^[3] expressed very accurately about the imposition of instructions and the so-called empty scientific terminology, which, in addition to zombifying people, do not carry anything in themselves.

Here is what the outstanding Russian SCIENTIST A. M. Khatybov writes in his pamphlets about science in general:



The main horse constant is, of course, "horsepower". At the beginning of its existence, this constant was the basis for the development of science. At the same time, **modern science cannot exist without this constant.** Recall that 1 horsepower is equal to 735.499-746 watts, that is, it is a unit of power, or energy. When working with the atom, there are minor inconveniences.

Science cannot lie, so the original horse was not a gray (There is an ancient expression: **"lies like a gray gelding"**). Another interpretation of this rule is possible: an exact scientific approach to the problems of logical thinking.

Most importantly, it was possible to measure an energy parameter, **without which even modern nuclear physics cannot exist.**

Nowadays, any schoolboy can indicate how many horsepower is in a single electric light bulb and how many horsepower a nuclear power plant pulls. **Without this constant, it is impossible to calculate weight, measure planets and distant stars, or calculate light fluxes.**

It is noteworthy that biology has a precise definition of the human spine below the ribs, the **"cauda equina**. Note that this does not mean the final element of the skeleton, but rather that energetically this part of the spine is connected to all the organs (as if unravelled).

In combination with the main constant, the horsepower, it is possible to obtain data on the condition of all organs, for example, using methods of measuring active points on the skin, or lymph nodes.

There is a unit of measurement in chemistry called the "**Horse Dose**".

The horse is the standard for dosage ("**A drop of nicotine kills a horse**").

The horse is the standard for the thought process - "**Let the horse think, he has a big head**".

In England, the horse is the **standard for sex**. If you take the Dictionary of Tabooed Vocabulary, everything that relates to sex is related to a horse, for example, **horse somebody** - to copulate. **There, too, the whole anatomy of sex is built on the word horse**.

In the scientific world, when submitting a paper for the Nobel Prize, it is customary to check the work not only for novelty, but also for consistency with physical constants, first of all, whether the measurement of energy constants is wrong. This way of checking is well known to the scientific world, and if everything corresponds, the work is immediately presented for the Nobel Prize.

Being attached to a horse is the ultimate reward (Vysotsky: "You can be Budyonny if you want, you can be his horse").

So, the horse helped to form the whole service, which is usually called "SCIENCE" (similar to the microsoft service).

In fact, science has remained outside the service, waiting to be noticed.

Recently, we have noticed a huge amount of garbage (as many as 190 academies of sciences in only one third-rate country). Already there are cries of environmentalists about the pollution of science (which does not yet exist) and demands to start cleaning the stables. The question of replacing the "Horse Certificate" has not yet arisen.

It's fascinating, isn't it?

To appreciate the achievements of modern science, you can see for yourself. Fortunately the Internet not only works to zombify and molest people, but like a stick, it has two ends. The creators of such a miracle as the Internet did not expect it to serve as a means of delivering true information aimed at enlightening people with knowledge who have awakened from their mental slumber. So I will not bore the reader with all the fallacies or **the deliberate imposition of false dogmas** of modern science...

Have you ever asked yourself the question: "WHY IN AN AGE WHEN MEDICINE TRUMPETS NEW METHODS OF DIAGNOSIS AND TREATMENT, WE HAVE BECOME ILL MORE OFTEN, AND THE NUMBER OF INCURABLE AILMENTS IS EVER INCREASING?"

Today, all TV channels and mass media are trumpeting about new and recent achievements of our medicine. Organ transplants, laser surgeries, new magic drugs, and so on, so on, so on. I will not specify, you can see everything yourself and watch TV. At the same time, statistics report depressing facts. Mortality increases and there are becoming younger.

And what is the number of cancer patients? Medicine has condemned them. And if you go on the Internet, it is simply flooded with requests and pleas for help. Only one diagnosis of cerebral palsy in children, what is it worth!

People have noted very accurately, in my opinion, the state of modern conventional medicine.

There are four kinds of doctors:

1. There are those who can't do anything, but they know everything. They are therapists.
2. The second do not know anything, but they can do everything. These are surgeons.
3. Still others do not know anything and do not know how to do anything. These are psychiatrists.
4. And there are doctors who know everything and know how to do everything. These are pathologists.

But people get to them too late...



That's exactly right, right in the bull's-eye; people have characterized our medicine, which has not grown beyond the knowledge of pathologists!

Why is all this happening? What is the cause?

According to "World Health Organization" statistics, the second highest death toll in the world is from "drug" poisoning. **Are you familiar with this information?** Has the media covered such a fact, modern pharmaceuticals? **NO!!!**

Ask yourself the question, why?

Yes, because all of our medicine and multinational pharmaceutical corporations have long been united in one organization to siphon money from the people, even at such a great price as the health of the nation! Constantly growing profits above all else! That's what comes first!

What or who can provide for the ever-growing appetites of these corporations? The question is rhetorical.

Unfortunately, modern "doctors" have forgotten the basic canon of their work, DO NO HARM!

Now ask yourself one more question.

How do the doctors who drive people to their graves manage to avoid responsibility?

It's very simple!

I'll give you an example based on my experience!

When I was 40 years old, the company sent me for a physical exam.

I conscientiously passed the prescribed specialists and was left with the last doctor, who gives a general conclusion of my state of health. Since there was a waiting list for him, I decided to read the results of the examination. It was not an easy thing to do; his handwriting was almost illegible. By the way, everyone knows about it and doesn't even try to read their handwriting, as if written with a chicken paw. But I was interested to find out what's wrong with my body, so I made an effort and managed to read some things. And as it turned out, it was not in vain. I had a bad heart, high blood pressure, broken bones, which for some reason I do not remember, etc.

After waiting my turn to see the therapist, I gave him the results of the examination and asked the question: "How did they know that I have a heart disease, everything was normal on the encylogram and where did the high blood pressure come from?"

Do you know what the doctor told me?

And what do you expect, you are already over thirty and so everything is properly diagnosed here! When I reported that my blood pressure was 120/80, the doctor laughed for a long time.....

I offered to check my blood pressure. He agreed and suggested, as always, that I sit down 10 times, which I did. The device showed 120/80. I insisted on putting those results in my medical book, grudgingly, but he had to do it.

What do you think? What's the catch of all these examinations?

The answer is. Inspections, in most cases, allow "doctors" to write a justification for your premature death, i.e., to absolve themselves of responsibility.

Many rank-and-file doctors will argue that they are following the instructions of the Ministry of Health. I sympathize with them to some extent, they are constrained in their actions by the framework of instructions and recommendations of a higher authority. But they need to understand! **That by their hands and with their acquiescence and obedience, many suffering people who turned to them for help are suffering and dying in agony!**

Think, please! What a price you pay for your living!

Here is what **Robert S. Mendelson** writes, in support of my words. "**Confessions of a Heretic from Medicine**":

"Diagnostic instruments are dangerous in themselves. The stethoscope, for example, is nothing more than a cult object. As a device, it does more harm than good. There is no doubt that the stethoscope can transmit contagious diseases from patient to patient. But there is almost no serious disease that cannot be suspected or diagnosed without the stethoscope.

"The only advantage of the stethoscope over the ear attached to the patient's chest is the convenience and psychological comfort of the doctor. Since there is nothing that can be heard with a stethoscope and not be heard by putting your ear to the patient's chest. I've seen doctors who wear a stethoscope around their neck and "listen" to a patient without putting headphones in their ears. At one time I thought it was terrible. But now I understand: perhaps doctors - consciously or instinctively - feel that the patient himself wants to be listened to with a stethoscope, because this is more part of a sacred ritual than a reasonable or useful procedure."

"The probability of EEG errors is obvious. But the electroencephalograph continues to be the main diagnostic tool in deciding whether a child really has organic changes that cause learning difficulties, whether he has minor brain damage, hyperactivity, or any of the twenty or thirty diagnoses invented for this "painful" condition."



"The X-ray, a device of truly magical power, has become a much more common and dangerous tool of Modern Medicine. Doctors know that their ability to be the first to recognize the cause of the disorder, to see through what others do not see, inspires people with awe.

And doctors literally revel in this power and prescribe X-rays for any reason - from the examination of acne to intervention in the secrets of intrauterine life."

I hope in this part of the article, I was able to convince the reader to use his mind and not be guided by dogmas and authorities... Your life and your family depend on it. **Read what is written on the drugs that you are prescribed!** Because the consequences of their use can be much more tragic than the disease itself.

Please forgive me for being like the media and pouring out so much negativity. I have tried to convey to you, in a milder form, the depressing situation of the majority of people who find themselves trapped within the existing order of things imposed by "our" authorities. I was not mistaken in my choice of the term HUMAN-APPLICATION. Unfortunately, people found themselves in a situation of MATERIAL USE, when the state or rather officials (who have the rank of Aries) went not only on the heels of MERCHANTS who are trying to get the maximum benefit, even at the cost of human life, but also in COLLUSION WITH MERCHANTS. OFFICIALS-TRADERS measure everything in the amount of money spent and they are not interested in what consequences will come in 5-10 years.



CAN'T SEE - I CAN'T HEAR YOU - I'M SILENT

But, unfortunately, this is the truth of modern life!

In the second part, we will try to consider other alternative methods and technologies, about which the official science of improving the human body is silent.

Let's look at some of them.

- Is it possible to heal with herbs?

Yes and no!

I'll start with the negative.

Every healer who treats people with herbs knows when to collect herbs. Each plant that nature gives us is endowed with a certain energy potential, which, depending on the time of day or the degree of maturation, changes both in the direction of increase and in the opposite direction - decrease. Another important component of the collection is who prepares it, and what energy potential it has. Where, in what zone the plant grows.

THAT IS WHY THE COLLECTION OF HERBS PURCHASED AT THE PHARMACY CARRIES A MINIMUM ENERGY POTENTIAL.

That is, it brings almost no benefit. True, there is a benefit. It does not harm the body, and then only with one but! If the disease is not neglected.

Herbal treatment can defeat the disease if you know when to collect herbs, and which ones will help, as well as that they have the necessary potential - this is at the earliest stage of the disease. Or you turned to a real healer. Unfortunately, for one conscientious and knowledgeable herb healer, there are dozens of impostors.

TO THE HEALER IN CHARGE, THE QUEUE IS FOR MONTHS AHEAD, AND THEY DO NOT GIVE ADVERTISING IN THE MEDIA.

There are healers who heal with the help of their psi-field, affecting not only the tissues of the body, accelerating the regeneration of cells, but also other material human bodies, which, interacting with our physical body, form a new cell to replace the damaged one.

The physical body is just the tip of the iceberg, a mirror of more complex processes that we, due to the imperfection of our senses, cannot yet see.

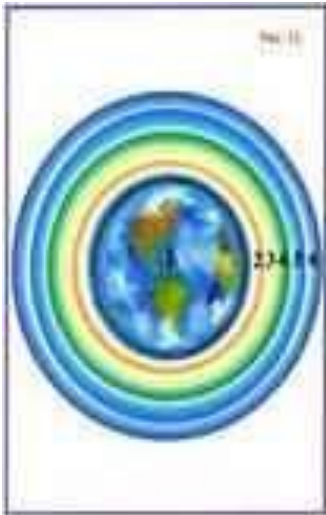
But every healer, just like any other person, has a certain limit or potential. To make it clearer. **Each healer is able to accept a limited number of sufferers.**

Now I think the moment has come to understand, not from the position of pathologists, what the human body is?

A person, in addition to the physical body, has several other bodies nested in each other (Russian matryoshka). These, so to speak, "other" material bodies, depending on the literature used, can have different names: the soul or the essence, or the brain, as a control system in the form of a non-inertial mass, or the matrix, and the physical body is for it just a kind of time jacket and an energy generator that serves as the foundation and feeds the essence. It can also feed astral parasites if the energy defenses are depleted. By the way, this is one of the causes of disease, including cancer.

Modern science has officially recognized the existence of "black matter" (translated from English "dark matter"), which makes up 90% of our universe, the remaining 10% is physically dense matter, which we can see with our own senses and explore with the help of created devices.

Our planet, our bodies, everything that surrounds us consists not only of the "visible tenth part, but also of the remaining ninety percent, which is "dark matter," or more correctly, "primary matter," and it is THEY who FORM THE MATERIAL WORLD OF NATURE on earth.



Our universe is formed by seven primary matters, and the human body, like any other physical objects, should be considered only as a combination of these seven primary matters, as a single whole.

Each cell of our organism, besides the physical body, has "additional" bodies - the brain (as defined by A.M. Khatybov), which also consists of primary matter, and *with proper accumulation and redistribution of primary matter in the human body, our physical body is able to independently fight almost all diseases known to modern medicine.*

The brain - additional bodies (not that in the cranium), as the highest state of charge equivalent structures, when relying on lower organizations (biostructures), has a certain corridor of direct control of the living cell of the biostructure.

In accordance with the laws of the connection of spaces, the magnetic pulse produced by the brain, and received back by it as confirmation (and determining the dimensionality of the charge in the neutron space), has a strictly consistent organization for each living cell. The magnetic pulse is generated by the brain from a basic series of octaves of k-structures: 96, 72, 68, 66, 64, 62, 54, 48, 32, 28, 24, 21, 16.

Octaves 66, 68, 72 determine the genotype, and the brain works with only one value out of three.

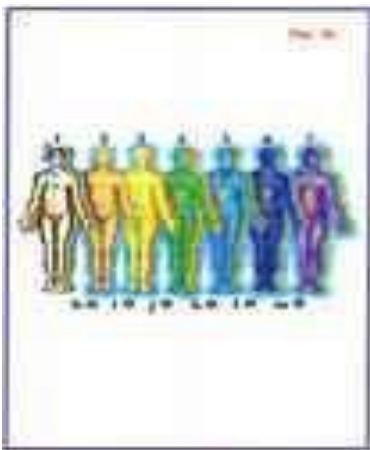
In addition, each value of this pulse can be decomposed into a 64*64 matrix, which determines the entire set of its values. A pulse must have a certain potential, and if this potential is below a certain standard value (see the reference book), the brain performs charge quantization by the temperature equivalent, then by the slip angle, and if there is no confirmation, the cell is perceived as dead, it does not exist for the brain.

Quantization limit by temperature (step 0.20 C) is up to 43.60 C, by slip angle - 21.50.

Any biostructures should be subordinated under normal conditions to this very brain mode.

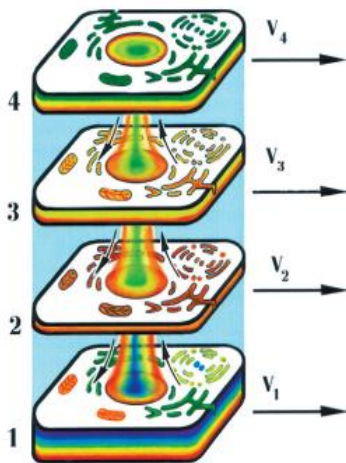
However, a living cell (biostructure) is organized in the neutron space, and the space difference imposes a number of restrictions on normal operation of a living cell.

The concept of neutron space was introduced to denote immaterial structures, or non-inertial mass. In science, this state is designated as "soul", but the light cloud that rises after death is also a material mass.



This is the key to understanding the processes of formation and proper development of the human body, and this is the ***main point in explaining the causes of disease, aging, and even death.***

The correct distribution of primary matter flows directly affects the formation, development and proper state of the human physical body - first, the primary matter flows affect the "additional" human bodies, and only then this influence is reflected on the physical level, and, accordingly, on human health.



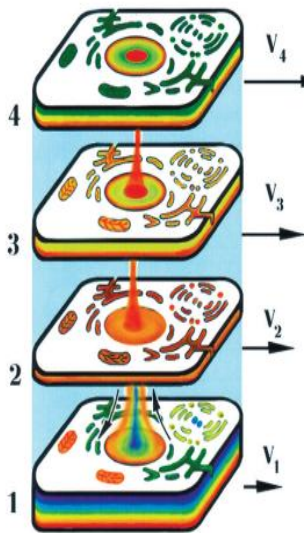
The evolutionary state of a healthy cell, when it has a physically dense, etheric, astral, and first mental body, in a moment of harmony between all these levels.



A healthy young cell is harmonious at all its levels. In other words, the rates of evolutionary development of the physical, etheric, astral, and mental bodies of the cell are identical to each other.

4. The first mental body of the cell.
3. The astral body of the cell.
2. The etheric body of the cell.
1. The physically dense cell.

Turning to the question of diseases, we can distinguish their main types:



4 genetic diseases, a person gets through the genes of their parents, which is quite easy for a superficial understanding.

3 acquired diseases, a person has received during his life.

2 environmental diseases, are associated with the negative impact of the external environmental surroundings.

1 karmic diseases, i.e. diseases brought by the essence.

With a disproportionate distribution of the flows of primary matter, the "additional" human bodies function and develop according to a different scenario, far from ideal, a person in this case can be compared to a plant that is poorly watered, its additional bodies for some reason do not receive sufficient nutrition for normal functioning. **This lack of nutrition, in turn, affects the physical body of a person in the form of all kinds of diseases, allergies and lack of immunity.**

Further influence of the external environment on the cell and the action of toxic products of the cell's own vital activity leads to a gradual decrease in the flow of matter to the astral plane of the cell, and it again loses some of its properties and qualities. In this case, the physical cell loses some of the intracellular water. The process of exhaustion and aging of the body begins.

Of course, it is worth noting that the physical body and the additional bodies of a person in everyday life receive a certain amount of primary matter, otherwise the very existence of a person would be impossible. ***Our production of primary matter occurs due to the splitting of physically dense substances (food, water, etc.) in the human body. And if the flows of primary matter in a particular person are distributed correctly, and all his bodies are fully saturated with these flows, then such a person has almost no health problems, he has a strong immune system, he is extremely rarely ill; he is full of life and energy, both physically and mentally.***

But often, for many reasons (unfavorable ecology, poor-quality or contaminated products, negative emotions, etc.), the amount of primary matter that we get from food is simply not enough to fully saturate additional human bodies. The exchange of flows between the additional bodies and the physical body of a person is disrupted, which again manifests itself in the form of numerous diseases, allergies and other ailments.

A person's bad habits also affect the distribution of primary matter flows. Too heavy elements, which are contained in huge quantities in cigarette smoke, alcohol and other narcotic substances, are not completely broken down by our body, we get some amount of primary matter from them, but there is a lot of waste after such splitting. ***And if there is too much of such waste, the body does not have time to cope with them, slags and various deposits are formed, which interfere with the normal functioning of the human body.***

The emotional state of a person plays a huge role in the distribution of primary matter flows, and if a person, due to life circumstances, is dominated by negative emotions (fear in all its manifestations, experiences, stress, and others), then the flows of primary matter from the physical body to additional bodies go into an undesirable channel, the flows are sharply reduced, or rather, the channels of transmission of these flows are reduced, and additional bodies do not receive the necessary amount of nutrition.

Different organs of the human body have additional bodies of different quality, more "complex" organs have more "complex" bodies, and this is due to the evolutionary development of human organs. More "complex" organs have more "delicate" bodies, because they perform a more important function in the body.

Changes in the albedo, for example, atmospheric phenomena - rain, snow, wind, drought - entail unforeseen distortions of the electric potentials of gravitational frequencies and the potentials of magnetic pulses, causing involuntary changes in the temperature of the cell and the sliding angle.

External stimuli - radiation, the action of chemical stimuli, the background influence of the form (for example, the place of residence) lead to a rearrangement of frequencies and, as a result, a distortion of the electrical potentials of a living cell. There are limits to the existence of both gravitational potentials and electrical potentials. When you go beyond these limits, the information exchange is distorted. As a rule, these distortions lead to the appearance of a different type of cell and the convolution of the code embedded in each cell. The genetic code is transformed into any other structure that can exist in conditions of stable external influence. This is not a bacterium that uses the electrical potentials of a living cell on its own, like a parasite, but the cell itself.

However, given the difference in the standard of the magnetic pulse in different spaces, a living cell has a wider range of its existence, without strictly agreeing on the time and space of the albedo. This means that the brain is forced to adapt to a new structure within its standard.

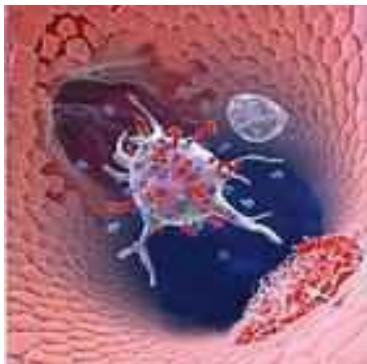
To prevent the avalanche-like formation of "alien" cells, the brain forms an integral corridor – 50,000 cells per solar day, according to the albedo of the brain, must be removed from the area of control of the brain. That is, if 10,000 such structures are formed, they are normally removed from the brain's communication area and are not subject to processing and control by a magnetic pulse, unless these cells have passed into another form of existence – bacterial, or autonomous.

When the cells are removed from the control area, everything is removed from them, and they are withdrawn (they will no longer be in the body).

On the other hand, the number of new cells with an altered albedo can exceed 50,000, and then the brain makes a dropout – less "harmful" cells remain and receive a temporary connection with the brain by magnetic pulse, and the rest are "disconnected". However, here is the "Trojan Horse" - the cells that are left narrow the range of the release, closing the channels through which these cells can be destroyed. Reducing the index from 50,000 to 45 leads to an unlimited growth of "temporarily bound cells", which are called "CANCER".

The brain is forced to rearrange potentials and charge equivalents under new structures, which in themselves can form a "test" of the brain itself.

Such a shutdown, in addition to concomitant diseases, is fraught with the appearance of cancerous tumors. Uncontrolled reproduction of cells with an altered structure begins.



The changed conditions of the neutron space also lead to changes in the functioning of the brain according to the reference parameters. The right and left helical structures of the DNA of a living cell can no longer be distinguished at the limit values of the electrical potential and are perceived by the brain as a normal living cell. But this means that each cell receives and has its own control structure. **Thus, the brain also receives a virus, that is, a structure that has an inverse albedo relative to the normal communication matrix.**

The appearance of the virus leads to a decrease in the initial charge equivalent without changing the reference values, that is, such parameters as the sliding angle and humidity already fall in the brain. **When the known limit values are reached, the brain can no longer control**, and will strive to get rid of any cell – live or from a colony, but this does not correct its condition, **since viruses**, reducing the charge equivalent of the brain, **lead to its destruction.**



Liquidation of colonies is performed by superposition of frequencies, but the brain, having no cells, which nevertheless receive a magnetic impulse, creates new cells of the same structure, according to the virus-brain connection, and even if a colony of cells is destroyed, the brain creates it anew, and not necessarily where it was before. **In proton (material) environment there are not and cannot be preparations affecting the immaterial environment. Knowing the frequencies that created the "aura" (etheric bodies) around autonomous cells, it is also possible to develop devices for eliminating the "aura".** Surgical operations, as a rule, are not successful, since any cell, and an autonomous one too, is primarily located in the neutron space, but with the knowledge of modern "science" of horse literacy and the methods of the pathologist, you will not look there.

Unfortunately, from the position of HORSE LITERACY and KNOWLEDGE OF THE PATHOLOGIST, modern science and medicine in particular, "fights" with another insidious disease -DIABETES and HEMOPHILIA.

It is generally accepted that an increase in blood sugar is a sign of diabetes mellitus, and a lower content is hemophilia. At the same time, there is a violation of metabolic processes in the body, functional changes in the organs. The human psyche and behavior change.

First of all, the lymph system suffers. It should be noted that diabetes mellitus and hemophilia cannot be treated by modern medicine, and there is an increase in the number of patients. The reasons are sought in nutrition, ecology, social order, etc.

NOT A SCIENTIFIC POINT OF VIEW OF THE CAUSE OF THE DISEASE!!!

2. What is "sugar"?

Let's start with the "terrible discovery": there is no such thing as "blood sugar". It is no secret that modern medicine works only with inanimate structures. Experiments are only carried out on living structures. Let us explain that each cell of the body is controlled by the brain, the control system of modern medicine is not known. In addition, the structure of the living cell itself is unknown. Studies under the microscope are studies of an inanimate structure (devoid of communication with the control system), so all recommendations relate only to dead structures. In addition, the brain itself forms sensations, on the basis of which the instrument part for low-level research is built, and if the brain for some reason changed the formation of sensations, this does not mean that the external world has also changed. A number of publications have already mentioned that the movement of blood through the vessels resembles the movement of metal ions under the influence of an external (solenoid) electromagnetic field, while the source of this field is not specified. At least the first tentative step towards the truth has already been taken.

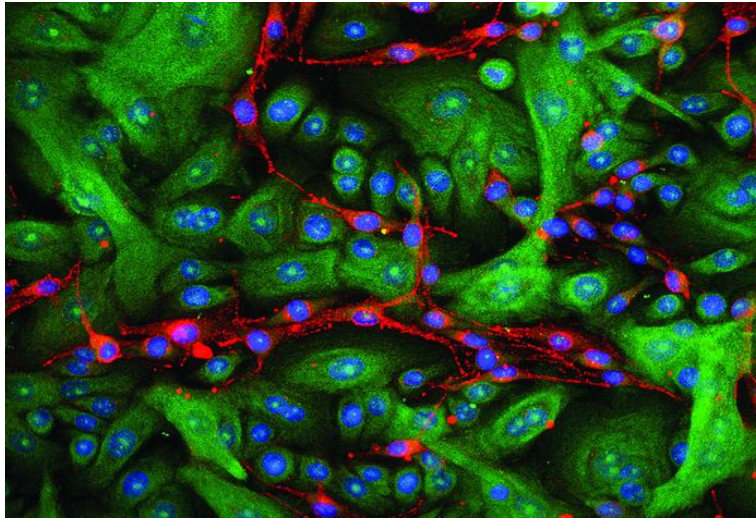
3. Basic concepts



3.1. A person is a structure that simultaneously resides in two spaces – in the neutron (proton) and antineutron (electronic) spaces (Russian Matryoshka). All sensations are formed only for the neutron space. Other connections of the brain (with neutrino space) are not considered here.

3.2. The entire development of life on Earth is determined by the frequency dependencies formed by the difference between two numbers of the Solar System. No living organisms of other systems can exist on Earth without their own gravito-magneto-electric generator.

3.3. The basis of any living structure is hydrogen, and the formation of ions is subject to the same difference in numbers.



3.4. The main structure of a living cell is Nitrogen (if you follow the names of the periodic table), or the 4th structure of the hydrogen transformation. Each structure is a specific gravitational frequency and electrical potential. The connection between the blocks is magnetic pulses that have their own potential and frequency. The frequency range of magnetic pulses for a living cell (communication with the neutron space) is 4-84 octaves; the next buffer has a range of 54-96 octaves.

3.5. The basis of sugar is the nitrogen block. This is the most easily synthesized and, accordingly, decayed compound that carries all the necessary potentials in both neutron and antineutron structures.

3.6. The main principle for the current state of the nitrogen block is that the albedo of the entire block is zero. What does this mean? The integral value of all acquired potentials, taking into account the magnetic pulses, is equal to the integral value of all losses associated with the redistribution of potentials after synthesis.

3.7. The most stable system is the neutron system, and any violation in any of the upper structures entails the transmutation of the nitrogen block ions in the neutron structure, which violates the albedo, when a certain balance is reached, the magnetic impulse of the connection with the upper structure disappears. At the same time, electric potentials and magnetic impulses are redistributed between the remaining structures.

Each albedo violation entails, in addition, the formation of heavy metal ions, or simple ions, in the nitrogen block, which cannot be bound by a magnetic pulse and are the ballast for the nitrogen block. Since the brain uses gravitational frequencies to communicate with the cell, getting additional frequencies is an indicator.

3.8. The meaning of sugar synthesis for cells is the formation of an electric potential of a given gravitational frequency and the creation of a sufficiently complex structure for subsequent transmutation with blocks superposing the resulting potential.

The type of structure is determined by the state of the atoms, the type of organization, and the type of correspondence to the constants of the Solar System.

4. Energy features of the transformation of nitrogen blocks in neutron space.



The resulting ions of the corresponding structures with the specified parameters of gravitational frequencies, electric potentials, and the accompanying magnetic pulse make up the neutron part of the nitrogen carrier block SHR.

The cargo - the initial gravitational potential (and there are tens of thousands of them) may not fit in the container, so any cargo is converted into a standard form (compressed, stretched, transformed, etc.). The nitrogen block undergoes quite a few changes until the measuring mechanism (built on sensations) indicates that the block is ready to be loaded into the container. The function of standardization is performed by the pancreas. The glucose that comes out of it is the final form of the cargo before it is packed into the container and the container, that is, the cargo-container pair. Change of the form of the initial block occurs at the expense of energy expenditures of the conveyor - pancreas, and if these expenditures exceed an admissible level, or sensations of expenditures exceed sensations of the warehouse (right kidney), there is a mode of overload of the pancreas, in which there is no replenishment of costs, while the cells of the pancreas can lose connection with the brain and be turned off from the conveyor. The assembly chamber in the container is the heart, or rather its right atrium. It is a magnetron of sorts, where, with a clock cycle of about 1 second, the cargo is packed into the container. After packing, the assembly enters the left atrium and is then sent to the address indicated on the "box."



Each container is intended for a specific cell, and no other cell in normal operation can "capture" someone else's container and, moreover, change the labeling.

Serious disorders occur in the case of changes in the communication potentials of the SHR organization systems with the brain, which leads to an oscillatory process – the transition to one of the stable forms that accelerate the transmutation of ions in the neutron space – diabetes mellitus or hemophilia. Each of these forms has one property – a step change of sensations with the subsequent elimination of magnetic impulses connecting different spaces.



For humans, there are norms for the distribution of glucose:

Right-spiraled sugar is translated as an ionic structure in the amount of 125 grams per 108,000 grams of human weight. Moreover, this is not sugar, but glucose, the number of octaves of its state is 12, the lower 32 octave is 12.4 %, the upper 94.625625 octave is 36 %, the distribution for organs is as follows:

5. The living cell and glucose.

A living human cell is not only its ionic state. And of course, the existence of a living cell does not depend on chemical reactions. Conventionally, a living cell can be divided into three parts – the low-octave and high-octave output and the central part. The central part is a kind of "perpetual motion machine" with a given lifetime. The relationship between time and space in a living cell is determined by the sliding angle (see "Diogenes' Barrel"); the values of this angle are from 21.6 to 43.5 and determine the life time from 0 to 32,000 years (on the Earth's time scale). The midpoint corresponds to 124 years of life. A perfect cell can live for 32,000 years, under the same external conditions.

The optimal point of 124 years corresponds to a cell that is close to perfect, but changes at the next mutation due to changes in external conditions. The albedo of the cell is always zero (that is, the midpoint), where the temperature is 36.60 in equine terms. Note that a living cell is a multi-stage (multi-octave) structure – from 32 (ionic) to 96 (neutrino) octaves. Each cell in violation of the albedo requires the brain to "feed" or output excess potentials. In this case, the brain forms a direct address delivery or connects channels for the output of excess potentials.

There is no need to explain how important it is to "eat lunch" or "go to the bathroom" on time – if the regime is violated, albedo changes occur in a living cell, a midpoint shift, disturbances in the communication system with the brain, etc. Such cells either die or become "vampires" in the environment of other cells.

At the same time, the "peaceful" life of the surrounding cells is also disrupted. For a detailed description of the living cell, the purpose of potential output systems, see the appendices to the "BIOSPHERE OF THE EARTH".

6. Brain communication and choice of the type of catalyst.



As stated above, the brain, having received a signal from a living cell, forms it either delivering appropriate potentials (on appropriate octaves), or frees the cell from excess potentials. Of the many structures that form glucose, medicine has identified one-insulin. **Insulin is a catalyst, but it only works in a living environment, and its structure is shaped by the brain.** If we isolate insulin and try to look at it, we will see dead matter with the remnants of potentials and magnetic impulses that survive in the absence of communication with the brain. This is similar to how you try to look at blood taken from a vein under a microscope – it has passed through sepsis and is no longer the living blood that is in the veins and arteries. Insulin is not just a multi-octave catalyst, according to the commands of the brain; the pancreas produces exactly the insulin that is currently needed. In addition, the low-octave portion of insulin is "rolled" into the protein container and delivered to the living cell, where it is needed to "unload" the delivered potentials. Therefore, insulin must not just exactly match the genotype, the brain must be able to control all the frequency potentials of this catalyst, otherwise the result of container delivery will not be determined. **The brain begins to change the functions of the delivery tracts, changing the frequency potentials of the kidneys, pancreas, etc. There is an auto-oscillatory (uncontrolled) process, which is usually called either diabetes mellitus or hemophilia.**

7. Artificial catalysts.

In the conditions of the self-oscillating process, an attempt is made to stabilize this process (not to remove it, but to stabilize it) by introducing artificial catalysts – insulin, obtained, for example, from the pancreas of pigs. At the onset of seizures, this insulin is injected into the body, creating the illusion of normalization of metabolic processes. In addition, as the condition worsens, it begins to be administered regularly.

8. Consequences of the use of artificial catalysts.

An artificial catalyst is a structure that has no direct connection to the brain.



In addition, the insulin obtained in this way has only low-octave components that have passed sepsis (destruction of direct connections). But even low-octave components correspond partially to the meaning of getting the container, so their presence brings temporary relief. In this case, the cell receives a "rattling" mixture of unknown or unwanted high-octane potentials from the "pig lining".

Each new dose of artificial insulin shortens the life of the cell. The brain cannot intervene in this process because the lack of control prevents anything from being done.

The presence of artificial insulin in the body violates first of all, of course, the albedo of the brain itself, which generates signals in the information field about the violation of the albedo, and the SYSTEM has the right to proceed to the elimination (death) of such a brain that is unable to cope with its problems.

In the abbreviated form of the presentation, I have given only two examples that show the causal relationship of the occurrence of the disease. Let me remind you that there are millions of human diseases, and only a small part of them has been diagnosed by modern medicine. That is why it is not able to cure a person. In the best case, the disease goes into a chronic stage.

The only difference in A. M. Khatybov and N. V. Levashov's terminology (etheric, astral and mental), is the former called other bodies according to scientific terms (non-inertial mass and brain). This is the only difference in the works of these two OUTSTANDING SCIENTISTS; otherwise they only complement each other.



Many people reading these lines will ask themselves the question; what if these scientists have understood the cause of all ailments?

And, how can this knowledge be applied to heal a person? But don't jump to conclusions! **These greatest scientists not only got to the bottom of the true cause of human diseases, but also created a unique, and by the standards of the modern material world, priceless, yes, priceless technology for healing the human body.** How can money evaluate our health, or the lives of our relatives and especially our children?

To solve these difficult problems, N. V. Levashov created the "SvetL" software technology together with the Russian Scientific and Technical Society, which has already been repeatedly tested and is able to not just guarantee the solution to the problems described above.

The principle operation of the "SvetL" Complex is that it not only saturates a person with the appropriate energy flows, but also restores the qualitative structure of the body system to a healthy state.

The "SvetL" Complex carries a software module that is functionally similar to a living organism with a fairly high level of artificial intelligence, which is fundamentally different from those that are spoken of by today's scientists and modern science in general.

The "SvetL" Complex automatically regulates the accumulated energy flows and distributes them in strict dependence on the current tasks of improving the body and maintaining such a state of the body for a long time.

The "SvetL" Complex successfully copes and cleanses the body from all kinds of viruses, bacteria, protozoa that enter the human body in the womb or during the postpartum period (for example, cerebral palsy and other diseases).

The "SvetL" Complex, when operating, is able to restore the levels of the entity bodies damaged for various reasons to the state of normality. Then, by superimposing the projection of information with the flow of primary matter from the entity to the physical body, it creates conditions for the reproduction of healthy cells. Stimulating and changing the body, the generator suppresses the activity of pathogens and viruses.

Depending on the characteristics of some diseases, the elimination of the disorder is reduced not just to the destruction of old cells and the creation of new ones. So, for example, in the case of a large amount of salt deposits on the bones and vessels, the generator starts the processes that accompanied the cause of these deposits, in reverse order, or simply annihilates salt and bone growths. In the reverse order, the processes can be started at a rate several orders of magnitude higher than the direct processes that led to the deposition of salts or bone growths. However, do not forget that the speed will be limited by the load that a person can withstand without going into the exorbitant mode.

The "SvetL" Complex successfully helps the body to protect itself from the adverse effects of the changing environment and get rid of toxins that, voluntarily or not, enter the body from the outside.

For effective recovery, the "SvetL" Complex, depending on the state of the body of the owner, independently chooses which output channel to use to get rid of toxins. Usually, cleaning of toxins occurs through the maxillary sinuses of the nose, through the sinuses of the inner ear, then through the nasopharynx, and then they enter the gastrointestinal tract and are excreted outside. Also, the removal of toxins and mucus occurs through the urogenital and lymphatic systems.

Through a carefully thought-out methodology and precise process of program implementation the "SvetL" Complex transforms the physical body of a person, **making relapse impossible**.

THE "SvetL" Complex IS ESPECIALLY EFFECTIVE IN CHILDREN'S DISEASES.

As a result, the child is not only guaranteed to get rid of all pathologies and diseases, he develops harmoniously, significantly improving his perception and assimilation of educational material. And at times increases the body's endurance, memory, concentration, etc.

I will not bore you with a list of all the merits of this truly beautiful complex, because a hundred pages of typewritten text will not be enough. I will only tell you that there are millions of different ailments in the world. Medicine has diagnosed only a small part of them. And the recovery of the body primarily depends not only on the correct diagnosis of the disease, but also on the identification of the cause. Identifying the cause is even more significant.

Many questions are received about the very design of the "SvetL" Complex. How does it work, so to speak, please send a picture.....

I will answer in the words of N.V. Levashov, the creator of this miracle!

As N.V. Levashov says: "Even if I wanted to, I couldn't send the scheme of the generator to those wishing to create it, and if it were possible to depict the scheme of the psi-field generator on paper, hardly anyone could understand this scheme, let alone create such a generator. And not because people are stupid or unable to understand, but because the action of the psi-field generator is based on completely different principles and laws than those known to modern mankind, this – first.

And secondly, in order to create such a generator, **it is necessary to have the appropriate qualities and potential, without which it is simply impossible to create such a generator, even if you correctly understand the principle of its operation"**.

I can tell you that the binding for such a multi-level device is usually any physical medium that acts as an "anchor". However, there are other carriers: such as liquid crystals (with a unique quality of dynamism), silver and silicon on which the generator maximizes its capabilities.

The action of the generator is not random and not spontaneous, but directed, according to the programs embedded in it.

In this complex, the physical carrier of the generator is a tablet computer. At the moment, the Complex is not the only device of this level, and regardless of the performance of the physical carrier and the purpose of the generator and other features, the principle of operation – structuring (transforming) the space aimed at achieving the result, remains the same. Structuring of space is a change in the properties and qualities of this space (including living and non-living matter), within the radius of action laid down in the generator program.

Such an action of the generator can be compared with the Source of life, the mention of which can be found in the Slavic-Aryan Vedas (Book Four, The Source of Life, the Second Message:

As a Source of Life, it gives strength to all –
people, gods, and various plants.

What does it reveal to the essence of each,
what gifts does it bestow on life...

In the Gods he reveals the hidden powers,
people are endowed according to their thoughts...

People who have lived under the influence of a parasitic system must be brought out of the dead-end mazes of development, through which they continue to wander even after the epochal changes that have occurred. The task is to help them move to a new, native existence of energies. This is also helped by the "SvetL" Complex. Through the harmonization of the essence of a person, the restoration and improvement of the human body takes place. And already through healthy saturated bodies, together with the learned and realized truthful information, the entity, being under the care of **the native Management System of the Earth** (the Source of Life), can actively develop, and using the energy potential of the body in the required amount.

The SvetL Program, with an active element – a psi-field generator, is a kind of antenna that connects the brain with the Earth's control system, helping the Brain (Essence) and the physical body to safely undergo qualitative transformations, preserving health and life. **At the moment, the connection of a person with the Earth's Management System is one of the most important tasks** that determines not only the physical health and development of the brain, but also the functional purpose (endowment) of a person in the future.

The RUSSIAN SCIENTIFIC AND TECHNICAL SOCIETY, headed by its founder and head FEDOR DMITRIEVICH SHKRUDNEV, did not stop there, and in accordance with the plan for the development of the "SvetL" Technologies, approved and endorsed during the lifetime of N. V. Levashov, today PRESENTED us with a new CARRIER of the "SvetL" Generator, in a simplified version of its execution, which successfully passed ALL the TESTS over the past six months. **"adaptive bioinformational Bracelets"**.

The active element of the Bracelet is the "SvetL" Program installed on it, which has a wide range of positive properties and is designed to solve problems of improving the body and restoring its functions, disturbed by various pathologies, infections and negative environmental factors, as well as creating conditions for harmonious mental and physical development of a person.

Having similar characteristics in terms of functional purpose and effect, there are some differences between the complex and the "SvetL" bracelets. I will try to cover this issue in more detail in the next publication.

We understand that most people, thanks to the distorted worldview imposed by social parasites, find it difficult to believe or even admit the possibility of the existence of technology that, without visible contact with the physical body, does wonders. But after all, at one time self-propelled "carts", and flights of physical bodies that are heavier than air, and radio, and TV, and mobile phones were beyond the realm of fiction, although their device and the principle of operation is still not known and understood by many, yet, this does not prevent people from using these devices, even to the detriment of their health.

By publishing this material, I set myself the goal, in a readable format, to convey to the reader the state of modern reality, affecting only the field of medicine so far!

In the following publications, we will look at the causes of other diseases and the method of recovery, without relapse!

"From now on, i.e. from 2013.01.07 at 00.15, the true state of any subsequent incarnation of the "Soul Essence" will not be "Reincarnation", as in the interventional Management System, but a **MANIFEST RITE**.

The new control program is enabled by one of the true (native) Control Complexes - Altai! From this moment, after the completion of its biological existence, the Condition of the Entity (in its non-inertial version) is subject to subsequent Phenomena in the material (physical) world in order to further perfect its Mind through the Rite into a new and only Human flesh!

This no longer applies to Entities that were previously corrected in their Brain Design, i.e. all individuals with the **4XX Brain genotype**. They cannot be revealed.

Each newly revealed Rite of the "Soul Essence" and the multiplicity of each subsequent Phenomenon through the Rite – depends on the degree of development of the individual Consciousness, the level of development of the Mind, the perfection of its construction and the obvious tendency of the progressive perfection of all of this.

Unnecessary and random Soul Entities on the planet Earth will soon be gone!!!!!!

This is a separate and most important "Beginning Launch": the acquisition by Man and his Soul Essence of true Immortality, the Righteous path of His constant perfection, the acquisition of an increasingly stable contact state with the Mind of the Earth and, through it, with the Mind of the Creator with each subsequent stage of the Revealed Rite.

Any subsequent Apparent Rite, unlike the past "Reincarnation", is no longer some kind of imputation into the World by a violent way of controlling nature (from the System). It is the process of truly positive completion of the Epitome of the purification (development) of individual Consciousness and the transition of states and constructs of Mind to a higher level of its perfection. This is the well-deserved "Right" to be REVEALED to the World through the RITE in the new Physical plane (flesh).

Why do we need new Rites into the World through a new Physical Plane (flesh)?

The very process of developing more perfect states of Consciousness, acquiring a more perfect constructive form of Mind, requires significant energy support on the part of the Flesh. **If there is such support, then the process of perfection itself takes place in a shorter time.** The Soul Essence has the possibility of energy accompaniment even without direct contact with the Physical Flesh, but the possibilities of the energy nature are very limited, and as a result, the process of improvement proceeds much slower (tens of thousands of times) and can nearly not be tied to the tact of the reference time of the Earth, i.e., to time as such.

NEW TRUTH Christmas!

The truth of the "Created World" has its determinants, i.e. some conditional parameters that define it: Conditions, Constructions, States of Form of separate objects of various Cluster formations, Paths of perfect development (Vectors of Goals).

And to characterize the state of an individual episode on a segment of some Path on embodiment of a separate Program of perfection, there is a state of Beginning (start) on the way of advancement to the Truth. This is the New Beginning state (start) on a very important path, - Man's return to the path of perfection of his true Mind, gaining contact state with the Earth Mind and through it with the Creator's Mind. This is the main and obligatory Way of Man, and this is the only such way the Earth needs him, and about such a Man the Earth will take care, providing him with knowledge of another level!" [4]

Let me remind you once again of N.V.Levashov's beautiful dictum, which should be a guide for us to make decisions in everyday life:

A PERSON SHOULD NOT BLINDLY TRUST EVERYTHING THAT THEY TRY TO IMPOSE ON HIM, HE SHOULD LEARN TO ALWAYS SEE THE CONNECTION BETWEEN CAUSE AND EFFECT, ONLY THEN WILL HE BE ABLE TO REMOVE ALL OBSTACLES IN HIS PATH!

[1] **Robert S. Mendelson. "Confessions of a Heretic from Medicine".**

[2] [The Patient](#)

[3] http://www.youtube.com/watch?v=oS9VMDENs_U

[4] **(From the address of B.V. Makov, Director of the Research Institute "CENTER FOR PROACTIVE STRATEGIES").**